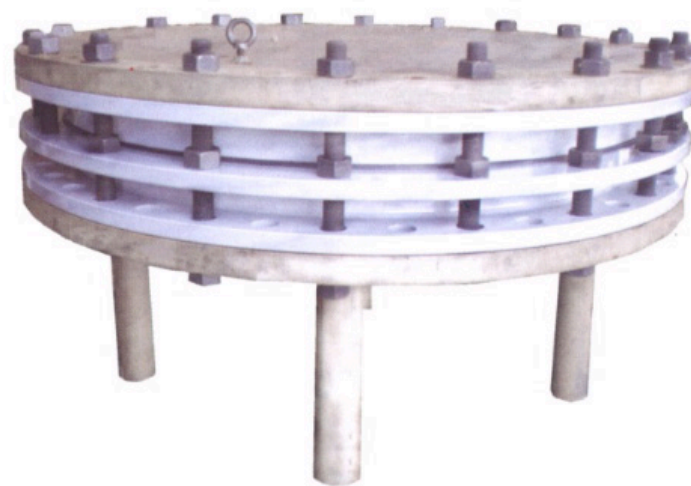
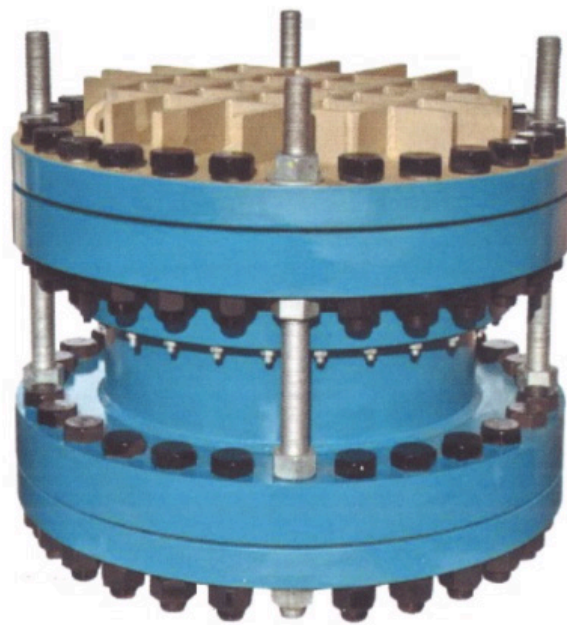




WORLD VALVE CO.,LTD

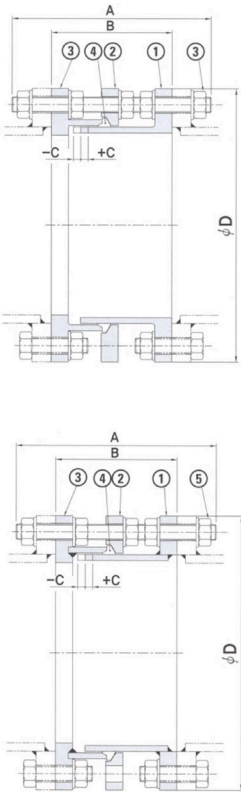
Flexible Coupling



Product Information



Dismantling Joint



Materials		
No.	Part Name	Material
1.	Spigot Pipe	Ductile Iron, Cast Steel, Stainless Steel, Steel
2.	Middle Ring	Ductile Iron, Cast Steel, Stainless Steel, Steel
3.	Flange Adaptor Body	Ductile Iron, Cast Steel, Stainless Steel, Steel
4.	Gasket	EPDM, NBR, VITON
5.	Bolt/Nut	Stainless Steel, Carbon Steel, Mild Steel

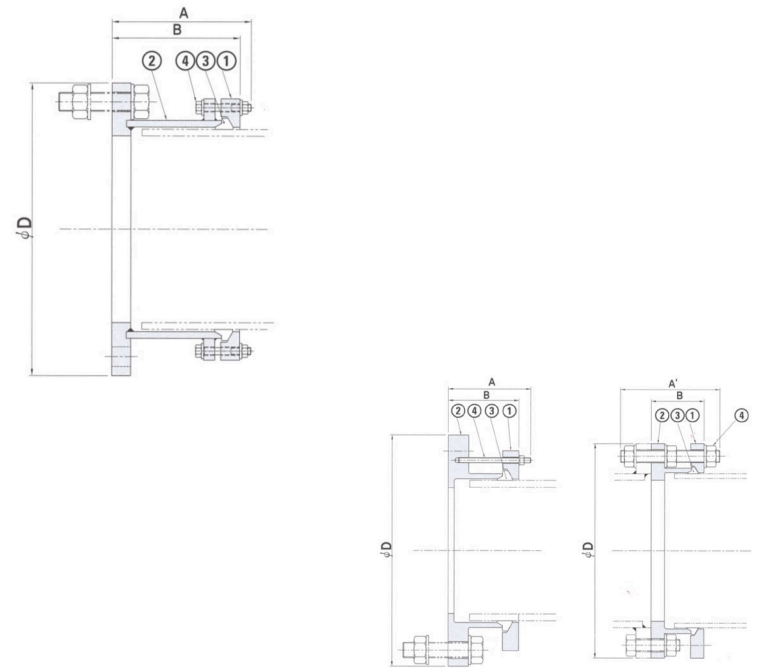
Specifications (applies to Dismantling Joint, Flange Adaptor, and Flexible Coupling)	
Size	DN40 ~ DN4000
Working Pressure	Up to 40bar
Working Temperature	-20°C ~ + 200°C
Applicable Flange	KS/JIS 5K, 10K, 16K, 20K ANSI B 16.1 Class 125LB ANSI B 16.5 Class 150LB, 300LB BS 4504 PN6, PN10, PN16, PN25, PN40 ISO 2084 PN6, PN10, PN16, PN25, PN40 DIN PN6, PN10, PN16, PN25, PN40 AWWA C207 Class D, E

Dimensions													
Size	A	B	C	øD									Weight (kg)
				5K	10K	16K	150LB	PN6	PN10	PN16	PN25	PN40	
40A	290	185	± 25	120	140	140	127	130	150	150	150	150	7.5
50A	290	185	± 25	130	155	155	152	140	165	165	165	165	8.3
65A	290	185	± 25	155	175	175	178	160	185	185	185	185	9.3
80A	290	185	± 25	180	185	200	190	190	200	200	200	200	12.0
100A	320	200	± 25	200	210	225	230	210	220	220	235	235	16.0
125A	340	200	± 25	235	250	270	255	240	250	250	270	270	19.0
150A	340	200	± 25	265	280	305	280	265	285	285	300	300	32.0
200A	360	220	± 25	320	330	350	345	320	340	340	360	375	46.0
250A	380	220	± 25	385	400	430	405	375	395	405	425	450	61.0
300A	390	220	± 25	430	445	480	485	440	445	460	485	515	69.0
350A	450	270	± 25	480	490	540	535	490	505	520	555	580	92.0
400A	470	270	± 25	540	560	605	595	540	565	580	620	660	118.0
450A	470	270	± 25	605	620	675	635	595	615	640	670	685	133.0
500A	510	300	± 25	655	675	730	700	645	670	715	730	755	154.0
550A	520	300	± 25	720	745	795	749	-	-	-	-	-	185.0
600A	530	300	± 25	770	795	845	815	755	780	840	845	890	195.0
650A	530	300	± 25	825	845	895	870	-	-	-	-	-	225.0
700A	570	320	± 25	875	905	960	927	860	895	910	960	-	234.0
750A	570	320	± 25	945	970	1020	984	-	-	-	-	-	270.0
800A	610	320	± 25	995	1020	1085	1060	975	1015	1025	1085	-	320.0
900A	620	320	± 25	1095	1120	1185	1168	1075	1115	1125	1185	-	367.0
1000A	660	325	± 25	1195	1235	1320	1289	1175	1230	1255	1320	-	405.0
1100A	660	325	± 25	1305	1345	1420	1403	-	-	-	-	-	525.0
1200A	680	325	± 25	1420	1465	1530	1511	1405	1455	1485	1530	-	660.0
1300A	680	325	± 25	-	-	-	1626	-	-	-	-	-	802.0
1350A	690	325	± 25	1575	1630	1700	1683	-	-	-	-	-	835.0
1400A	700	325	± 25	-	-	-	-	1630	1675	1685	1755	-	910.0
1500A	700	325	± 25	1730	1795	1865	1854	-	-	-	-	-	1022.0
1600A	800	410	± 25	-	-	-	-	1830	1915	1930	1975	-	1350.0
1650A	800	410	± 25	-	-	-	2032	-	-	-	-	-	1444.0
1800A	900	450	± 25	-	-	-	2197	2045	2115	2130	2195	-	1610.0
2000A	900	450	± 25	-	-	-	-	2265	2325	2345	2425	-	2006.0
2100A	910	450	± 25	-	-	-	2534	-	-	-	-	-	2176.0
2200A	930	450	± 25	-	-	-	-	2475	-	-	-	-	2455.0
2400A	930	450	± 25	-	-	-	2877	2475	-	-	-	-	3088.0



Flange Adaptor

Materials		
No.	Part Name	Material
1.	Middle Ring	Ductile Iron, Cast Steel, Stainless Steel, Steel
2.	Flange Adaptor Body	Ductile Iron, Cast Steel, Stainless Steel, Steel
3.	Gasket	EPDM, NBR, VITON
4.	Bolt/Nut	Stainless Steel, Carbon Steel, Mild Steel



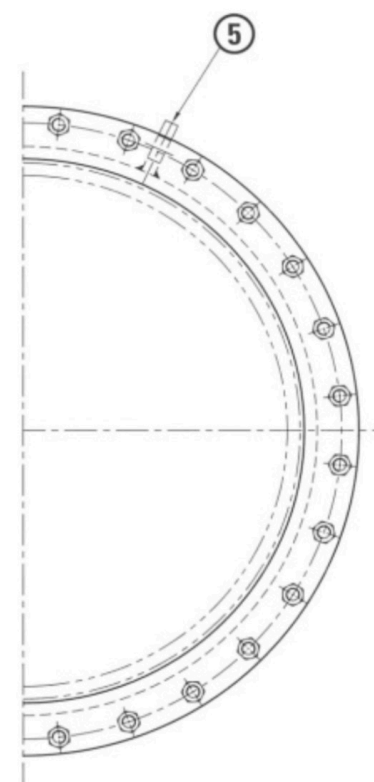
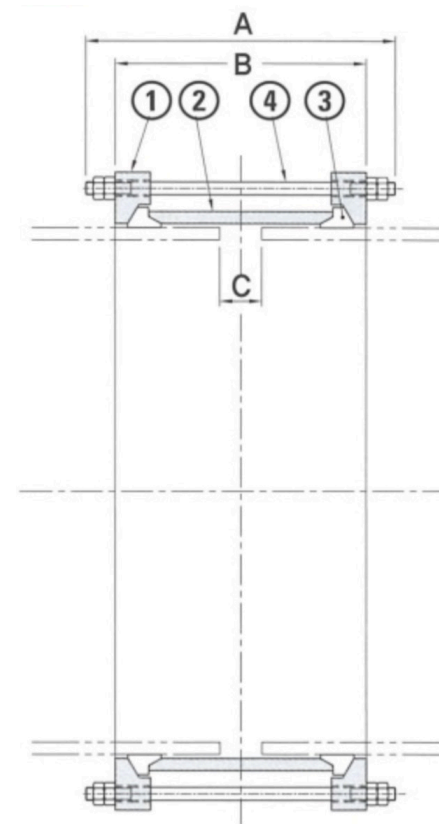
Dimensions													
Size	A	A'	B	ϕD									Weight (kg)
				5K	10K	16K	150LB	PN6	PN10	PN16	PN25	PN40	
40A	180	230	150	120	140	140	127	130	150	150	150	150	4
50A	180	235	150	130	155	155	152	140	165	165	165	165	4
65A	180	235	150	155	175	175	178	160	185	185	185	185	5
80A	180	235	150	180	185	200	190	190	200	200	200	200	6
100A	180	235	150	200	210	225	230	210	220	220	235	235	8
125A	210	280	170	235	250	270	255	240	250	250	270	270	10
150A	210	280	170	265	280	305	280	265	285	285	300	300	16
200A	210	280	170	320	330	350	345	320	340	340	360	375	23
250A	240	310	200	385	400	430	405	375	395	405	425	450	31
300A	240	315	200	430	445	480	485	440	445	460	485	515	35
350A	265	340	225	480	490	540	535	490	505	520	555	580	46
400A	265	345	225	540	560	605	595	540	565	580	620	660	59
450A	265	350	225	605	620	675	635	595	615	640	670	685	67
500A	300	400	250	655	675	730	700	645	670	715	730	755	77
550A	300	405	250	720	745	795	749	-	-	-	-	-	93
600A	300	410	250	770	795	845	815	755	780	840	845	890	98
650A	300	410	250	825	845	895	870	-	-	-	-	-	113
700A	330	450	280	875	905	960	927	860	895	910	960	-	117
750A	330	455	280	945	970	1020	984	-	-	-	-	-	135
800A	380	540	300	995	1020	1085	1060	975	1015	1025	1085	-	160
900A	380	545	300	1095	1120	1185	1168	1075	1115	1125	1185	-	184
1000A	380	550	300	1195	1235	1320	1289	1175	1230	-	1320	-	203
1100A	380	550	300	1305	1345	1420	1403	-	-	1485	-	-	263
1200A	420	595	340	1420	1465	1530	1511	1405	1455	-	1530	-	330
1300A	420	595	340	-	-	-	1626	-	-	-	-	-	401
1350A	420	600	340	1575	1630	1700	1683	-	-	1685	-	-	418
1400A	450	660	350	-	-	-	-	1630	1675	-	1755	-	455
1500A	450	670	350	1730	1795	1865	1854	-	-	1930	-	-	511
1600A	500	730	400	-	-	-	-	1830	1915	-	1975	-	675
1650A	500	740	400	-	-	-	2032	-	-	2130	-	-	722
1800A	550	800	450	-	-	-	2197	2045	2115	2345	2195	-	805
2000A	550	810	450	-	-	-	-	2265	2325	-	2425	-	1003
2100A	550	820	450	-	-	-	2534	-	-	-	-	-	1088
2200A	550	830	450	-	-	-	-	2475	-	-	-	-	1228
2400A	500	840	450	-	-	-	2877	2685	-	-	-	-	1544



Flexible Coupling

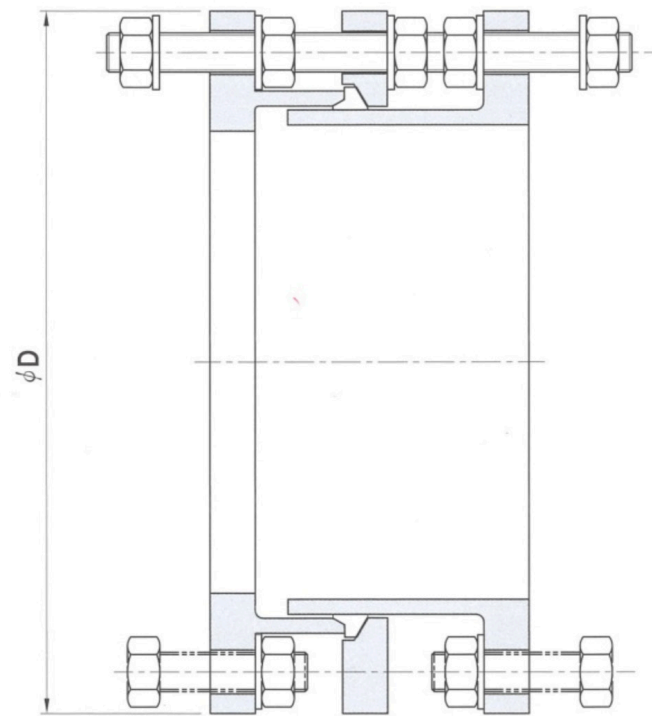
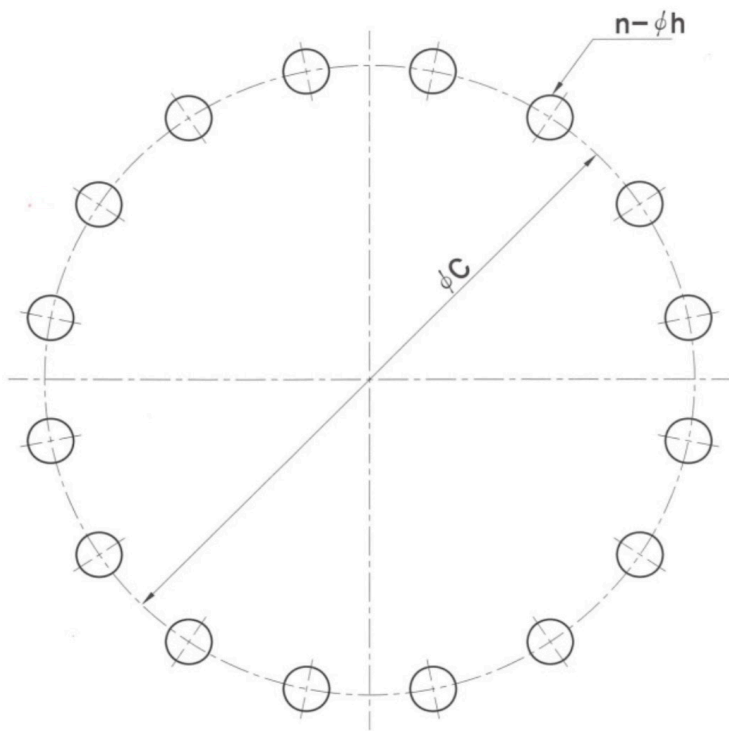
Materials		
No.	Part Name	Material
1.	End Ring Flange	Ductile Iron, Cast Steel, Stainless Steel, Steel
2.	Sleeve	Ductile Iron, Cast Steel, Stainless Steel, Steel
3.	Gasket	EPDM, NBR, VITON
4.	Bolt/Nut	Stainless Steel, Carbon Steel, Mild Steel
5.	Lifting Lug	Ductile Iron, Cast Steel, Stainless Steel, Steel

Dimensions				
Size	A	B	C	Weight (kg)
40A	290	185	50 ± 5	6
50A	290	185	50 ± 5	6
65A	290	185	50 ± 5	7
80A	290	185	50 ± 5	9
100A	320	200	50 ± 5	12
125A	340	200	50 ± 5	15
150A	340	200	50 ± 5	25
200A	360	220	50 ± 5	35
250A	380	220	50 ± 5	47
300A	390	220	50 ± 5	53
350A	450	270	50 ± 5	71
400A	470	270	50 ± 5	91
450A	470	270	50 ± 5	102
500A	510	300	50 ± 5	118
550A	520	300	50 ± 5	142
600A	530	300	50 ± 5	150
650A	530	300	50 ± 5	173
700A	570	320	50 ± 5	180
750A	570	320	50 ± 5	208
800A	610	320	50 ± 5	246
900A	620	320	50 ± 5	282
1000A	660	325	50 ± 5	312
1100A	660	325	50 ± 5	404
1200A	680	325	50 ± 5	508
1300A	680	325	50 ± 5	617
1350A	690	325	50 ± 5	642
1400A	700	325	50 ± 5	700
1500A	700	325	50 ± 5	786
1600A	800	410	50 ± 5	1038
1650A	800	410	50 ± 5	1111
1800A	900	450	50 ± 5	1238
2000A	900	450	50 ± 5	1543
2100A	910	450	50 ± 5	1674
2200A	930	450	50 ± 5	1888
2400A	930	450	50 ± 5	2375





Flexible Coupling



Flange Dimensions

Size	150LB			JIS 10K			JIS 16K			PN6			PN10			PN16			PN25		
	øC	n	h	øC	n	h	øC	n	h	øC	n	h	øC	n	h	øC	n	h	øC	n	h
80	152.4	4	5/8"	150	8	M16	160	8	M20	150	4	M16	160	8	M16	160	8	M16	160	8	M16
100	190.5	8	5/8"	175	8	M16	185	8	M20	170	4	M16	180	8	M16	180	8	M16	190	8	M20
125	215.9	8	3/4"	210	8	M20	225	8	M22	200	8	M16	210	8	M16	210	8	M16	220	8	M24
150	241.3	8	3/4"	240	8	M20	260	12	M22	225	8	M16	240	8	M20	240	8	M20	250	8	M24
200	298.5	8	3/4"	290	12	M20	305	12	M22	280	8	M16	295	8	M20	295	12	M20	310	12	M24
250	362	12	7/8"	355	12	M22	380	12	M24	335	12	M16	350	12	M20	355	12	M24	370	12	M27
300	431.8	12	7/8"	400	16	M22	430	16	M24	395	12	M20	400	12	M20	410	12	M24	430	16	M27
350	476.3	12	1"	445	16	M22	480	16	M30	445	12	M20	460	16	M20	470	16	M24	490	16	M30
400	539.8	16	1"	510	16	M24	540	16	M30	495	16	M20	515	16	M24	525	16	M27	550	16	M33
450	577.9	16	1 1/8"	565	20	M24	605	20	M30	550	16	M20	565	20	M24	585	20	M27	600	20	M33
500	635	20	1 1/8"	620	20	M24	660	20	M30	600	20	M20	620	20	M24	650	20	M30	660	20	M33
550	692.2	20	1 1/4"	680	20	M30	720	20	M36	-	-	-	-	-	-	-	-	-	-	-	-
600	749.3	20	1 1/4"	730	24	M30	770	24	M36	705	20	M24	725	20	M27	770	20	M33	770	20	M36
650	806.5	24	1 1/4"	780	24	M30	820	24	M36	-	-	-	-	-	-	-	-	-	-	-	-
700	863.6	28	1 1/4"	840	24	M30	875	24	M39	810	24	M24	840	24	M27	840	24	M33	875	24	M39
750	914.4	28	1 1/4"	900	24	M30	935	24	M39	-	-	-	-	-	-	-	-	-	-	-	-
800	977.9	28	1 1/2"	950	28	M30	990	24	M45	920	24	M27	950	24	M30	950	24	M36	990	24	M45
900	1085.9	32	1 1/2"	1050	28	M30	1090	28	M45	1020	24	M27	1050	28	M30	1050	28	M36	1090	28	M45
1000	1200.2	36	1 1/2"	1160	28	M36	1210	28	M52	1120	28	M27	1160	28	M33	1170	28	M39	1210	28	M52
1100	1314.5	40	1 1/2"	1270	28	M36	1310	32	M52	-	-	-	-	-	-	-	-	-	-	-	-
1200	1422.4	44	1 1/2"	1380	32	M36	1420	32	M52	1340	32	M30	1380	32	M36	1390	32	M45	1420	32	M52
1300	1536.7	44	1 3/4"	-	-	-	-	-	-	-	-	-	-	-	-	-	-	-	-	-	-
1350	1593.9	44	1 3/4"	1540	36	M42	1590	32	M56	-	-	-	-	-	-	-	-	-	-	-	-
1400	-	-	-	-	-	-	-	-	-	1560	36	M33	1590	36	M39	1590	36	M45	1640	36	M56
1500	1759.0	52	1 3/4"	1700	40	M42	1750	36	M56	-	-	-	-	-	-	-	-	-	-	-	-
1600	-	-	-	-	-	-	-	-	-	1760	40	M33	1820	40	M45	1820	40	M52	1860	40	M56
1650	1930.4	52	1 3/4"	-	-	-	-	-	-	-	-	-	-	-	-	-	-	-	-	-	-
1800	2095.5	60	1 3/4"	-	-	-	-	-	-	1970	44	M36	2020	44	M45	2020	44	M52	2070	44	M64
2000	-	-	-	-	-	-	-	-	-	2180	48	M39	2230	48	M45	2230	48	M56	2300	48	M64
2100	2425.7	64	2"	-	-	-	-	-	-	-	-	-	-	-	-	-	-	-	-	-	-
2200	-	-	-	-	-	-	-	-	-	2390	52	M39	-	-	-	-	-	-	-	-	-
2400	2755.9	68	2 1/4"	-	-	-	-	-	-	2600	56	M39	-	-	-	-	-	-	-	-	-