

GENERAL VALVE FOR MARINE USE



WORLD VALVE CO., LTD.

CAST BRONZE VALVES WVBC SERIES

Globe & Screw-down Check Globe Valves	Page 3, 11
Angle & Screw-down Check Angle Valves	Page 4
Lift Check Valves	Page 5
Swing Check Valves	Page 6
Rising Stem Type Gate Valves	Page 7
Union Bonnet Type Globe & Screw-down Check Globe Valves	Page 8
Union Bonnet Type Angle & Screw-down Check Angle Valves	Page 9
Union Bonnet Type Lift Check Valves	Page 10
Fuel Oil Tank Self-Closing Drain Valves	Page 12
Hose Globe & Angle Valves	Page 13, 14
Cocks	Page 15, 16
Emergency Shut-off Globe Valves	Page 43, 44
Emergency Shut-off Angle Valves	Page 45, 46

DUCTILE IRON VALVES WVFD SERIES

Globe & Screw-down Check Globe Valves	Page 17, 18
Angle & Screw-down Check Angle Valves	Page 19, 20

CAST IRON VALVES WVFC SERIES

Globe & Screw-down Check Globe Valves	Page 21, 22
Angle & Screw-down Check Angle Valves	Page 23, 24
Lift Check Globe & Angle Valves	Page 25
Swing Check Valves	Page 26
Gate Valves	Page 27, 28
Hose Globe & Angle Valves	Page 29, 30

CAST STEEL VALVES WVSC SERIES

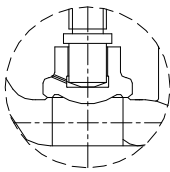
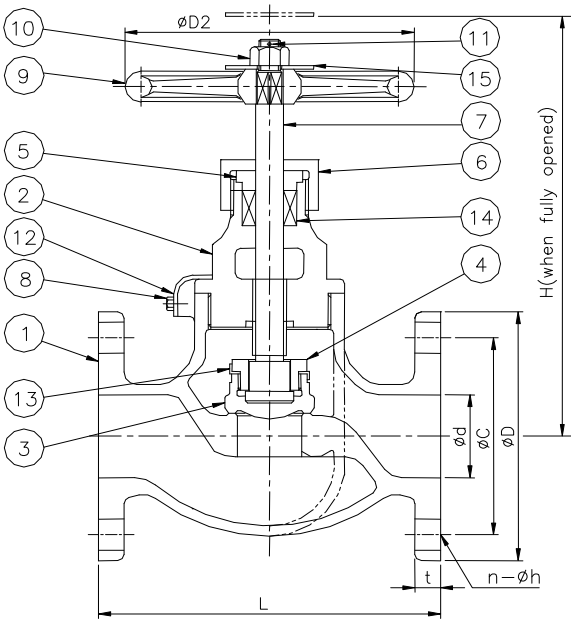
Globe & Screw-down Check Globe Valves	Page 31, 32
Angle & Screw-down Check Angle Valves	Page 33, 34
Gate Valves	Page 35
Globe & Angle Air Valves	Page 36
Emergency Shut-off Globe Valves	Page 43, 44
Emergency Shut-off Angle Valves	Page 45, 46

FORGED STEEL VALVES WVSF SERIES

Globe Valves	Page 37, 39
Angle Valves	Page 38, 40
Globe Air Valves	Page 41
Angle Air Valves	Page 42

HYDRAULIC CONTROL SYSTEMS FOR BUTTERFLY VALVES WWHTV & WWHAV SERIES

HYDRAULIC TRANSMITTER & ACTUATOR	Page 43, 44
----------------------------------	-------------



Screw-down check valve

MATERIAL

No	Name of part	Material
1	Body	CAC406
2	Bonnet	CAC406 or C3771BD or BE
3	Disc	CAC406 or C3771BD or BE
4	Disc Nut	CAC406 or C3771BD or C3604BD
5	Packing Gland	CAC406 or C3771BD or C3604BD
6	Gland Nut	CAC406 or C3771BD or C3604BD
7	Stem	C3771BD or BE
8	Set Screw	C2700W
9	Handwheel	FC200
10	Hexagon Nut	C3604BD
11	Split Pin	C2600W
12	Lock Plate	C2600P
13	Disc Lock Washer	C2600P
14	Packing	Non-Asbestos
15	Name Plate (※)	C2801P

※ Option

HYDRAULIC INSPECTION

Rating	Hydraulic Inspection Mpa	
	Body	Seat
5K	1.05	0.77
16K	3.3	2.42

PRESSURE RATING

Applicable Standard No.	Refer to JIS F7427	
Fluid Condition	Maximum working pressure Mpa	
Steam of 205°C or less	0.5	1.6
Air, Gas, Oil and Pulsation water	0.5	1.6
Non-shock water of 120°C or less	0.7	2.2

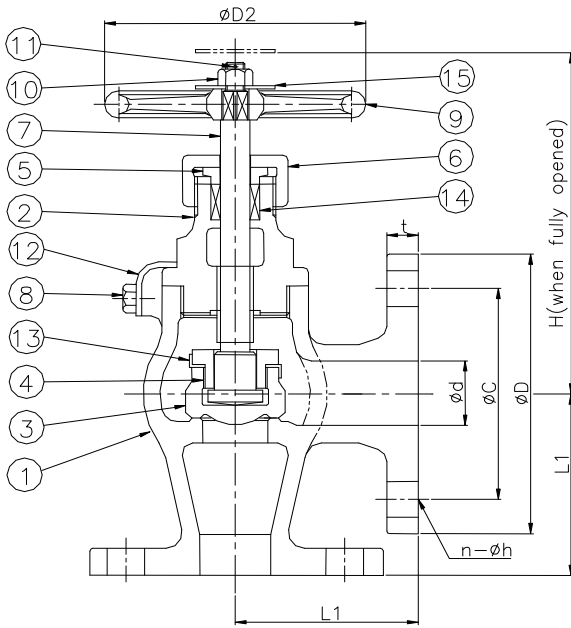
DIMENTIONAL TABLE

Model No	WVBCFG05 / WVBCFNG05								
Standard	Refer to JIS F7427 (F7301 / F7351)								
Flange	JIS 5K FF								
Item	GLOBE VALVE / SCREW-DOWN CHECK GLOBE VALVE								
Size	d	L	D	C	n-h	t	H	D2	Weight [kg]
15A	15	100	80	60	4-12	9	130/130	80	2.02/1.96
20A	20	110	85	65	4-12	10	140/140	100	2.86/2.77
25A	25	120	95	75	4-12	10	160/155	125	3.54/3.41
32A	32	140	115	90	4-15	12	170/165	125	5.00/4.86
40A	40	160	120	95	4-15	12	190/185	140	6.48/6.30
50A	50	210	130	105	4-15	14	235/-	140	11.7/-
65A	65	250	155	130	4-15	14	260/-	160	17.0/-

Model No	WVBCFG16 / WVBCFNG16								
Standard	Refer to JIS F7427 (F7303 / F7409)								
Flange	JIS 16K FF								
Item	GLOBE VALVE / SCREW-DOWN CHECK GLOBE VALVE								
Size	d	L	D	C	n-h	t	H	D2	Weight [kg]
15A	15	110	95	70	4-15	12	130/130	80	2.76/2.70
20A	20	120	100	75	4-15	14	140/140	100	3.72/3.63
25A	25	130	125	90	4-19	14	160/155	125	5.20/5.09
32A	32	160	135	100	4-19	16	170/165	125	6.91/6.77
40A	40	180	140	105	4-19	16	190/185	140	8.43/8.25

WVBCFL/WVBCFNL

CAST BRONZE ANGLE VALVE FOR MARINE USE - 5K, 16K



Screw-down check valve

MATERIAL

No	Name of part	Material
1	Body	CAC406
2	Bonnet	CAC406 or C3771BD or BE
3	Disc	CAC406 or C3771BD or BE
4	Disc Nut	CAC406 or C3771BD or C3604BD
5	Packing Gland	CAC406 or C3771BD or C3604BD
6	Gland Nut	CAC406 or C3771BD or C3604BD
7	Stem	C3771BD or BE
8	Set Screw	C2700W
9	Handwheel	FC200
10	Hexagon Nut	C3604BD
11	Split Pin	C2600W
12	Lock Plate	C2600P
13	Disc Lock Washer	C2600P
14	Packing	Non-Asbestos
15	Name Plate (※)	C2801P

※ Option

HYDRAULIC INSPECTION

Rating	Hydraulic Inspection Mpa	
	Body	Seat
5K	1.05	0.77
16K	3.3	2.42

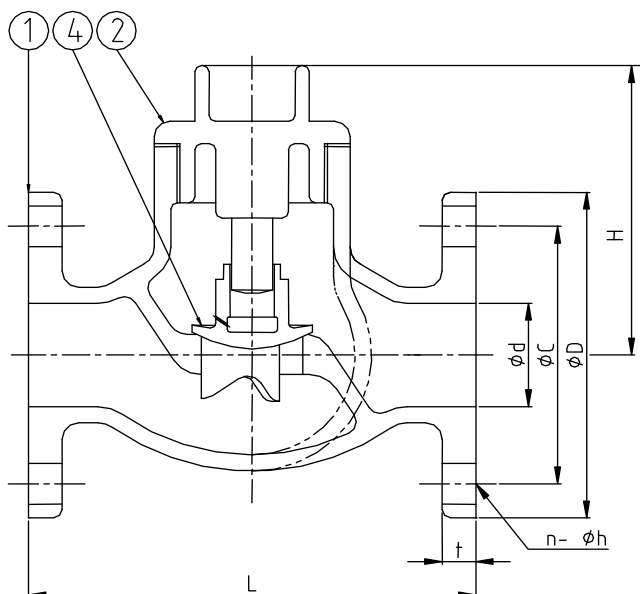
PRESSURE RATING

Applicable Standard No.	Refer to JIS F7427	
Fluid Condition	Maximum working pressure Mpa	
Steam of 205°C or less	0.5	1.6
Air, Gas, Oil and Pulsation water	0.5	1.6
Non-shock water of 120°C or less	0.7	2.2

DIMENTIONAL TABLE

Model No	WVBCFL05 / WVBCFNL05								
Standard	Refer to JIS F7427 (F7302 / F7352)								
Flange	JIS 5K FF								
Item	ANGLE VALVE / SCREW-DOWN CHECK ANGLE VALVE								
Size	d	L1	D	C	n-h	t	H	D2	Weight [kg]
15A	15	55	80	60	4-12	9	120/120	80	1.98/1.92
20A	20	60	85	65	4-12	10	130/125	100	2.73/2.64
25A	25	65	95	75	4-12	10	145/140	125	3.44/3.30
32A	32	80	115	90	4-15	12	150/145	125	4.77/4.63
40A	40	85	120	95	4-15	12	165/160	140	5.99/5.81
50A	50	100	130	105	4-15	14	200/-	140	10.1/-
65A	65	115	155	130	4-15	14	220/-	160	15.6/-

Model No	WVBCFL16 / WVBCFNL16								
Standard	Refer to F7427 (F7304 / F7410)								
Flange	JIS 16K FF								
Item	ANGLE VALVE / SCREW-DOWN CHECK ANGLE VALVE								
Size	d	L1	D	C	n-h	t	H	D2	Weight [kg]
15A	15	70	95	70	4-15	12	120/120	80	2.73/2.67
20A	20	75	100	75	4-15	14	130/125	100	3.65/3.56
25A	25	85	125	90	4-19	14	145/140	125	5.16/5.02
32A	32	95	135	100	4-19	16	150/145	125	6.72/6.58
40A	40	100	140	105	4-19	16	165/160	140	8.13/7.95



MATERIAL

No	Name of part	Material
1	Body	CAC406
2	Bonnet	CAC406 or C3771BD or BE
4	Disc	CAC406 or C3771BD or BE

HYDRAULIC INSPECTION

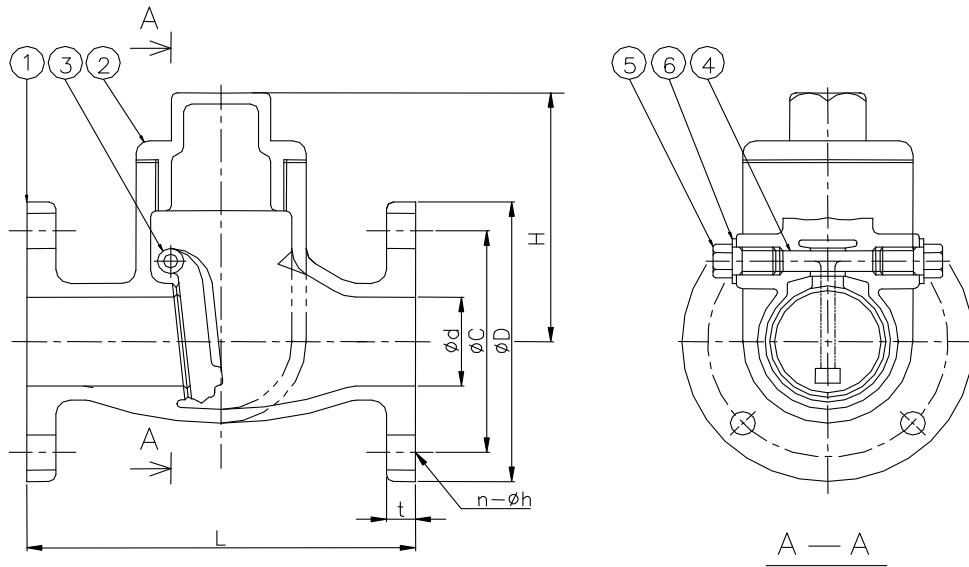
Rating	Hydraulic Inspection Mpa	
	Body	Seat
5K	1.05	0.77~0.40

PRESSURE RATING

Applicable Standard No.	Refer to JIS F7427
Fluid Condition	Maximum working pressure Mpa
Oil and Pulsation water	0.5
Non-shock water of 120°C or less	0.7

DIMENTIONAL TABLE

Model No	WVBCFLN05							
Standard	Refer to JIS F7427 (F7356)							
Flange	JIS 5K FF							
Item	LIFT CHECK GLOBE VALVE / LIFT CHECK ANGLE VALVE							
Size	d	L/L1	D	C	n-h	t	H	Weight [kg]
15A	15	100/55	80	60	4-12	9	62/52	1.47/1.43
20A	20	110/60	85	65	4-12	10	71/58	1.92/1.79
25A	25	120/65	95	75	4-12	10	77/62	2.41/2.30
32A	32	140/80	115	90	4-15	12	81/61	3.85/3.62
40A	40	160/85	120	95	4-15	12	91/67	5.00/4.50



MATERIAL

No	Name of part	Material
1	Body	CAC406
2	Bonnet	CAC406
3	Disc	CAC406
4	Pin	C3771BD or BE
5	Plug	C3771BD
6	Gasket	Non-Asbestos

HYDRAULIC INSPECTION

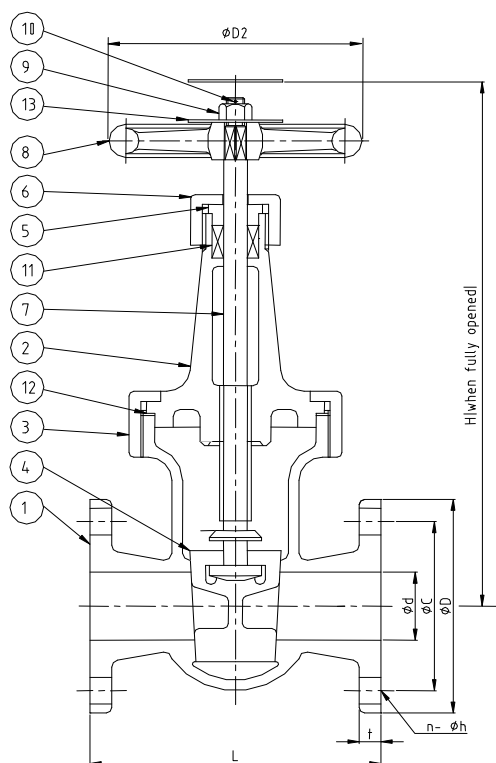
Rating	Hydraulic Inspection Mpa	
	Body	Seat
5K	1.05	0.77~0.40

PRESSURE RATING

Applicable Standard No.	Reffer to JIS F7427
Fluid Condition	Maximum working pressure Mpa
Oil and Pulsation water	0.5
Non-shock water of 120°C or less	0.7

DIMENTIONAL TABLE

Model No	WVBCFSN05							
Standard	Reffer to JIS F7427 (F7371)							
Flange	JIS 5K FF							
Item	SWING CHECK VALVE							
Size	d	L	D	C	n-h	t	H	Weight [kg]
25A	25	110	95	75	4-12	10	69	2.24
32A	32	130	115	90	4-15	12	79	3.07
40A	40	140	120	95	4-15	12	93	4.34



MATERIAL

No	Name of part	Material
1	Body	CAC406
2	Bonnet	CAC406
3	Bonnet Nut	CAC406
4	Disc	CAC406
5	Packing Gland	CAC406 or C3771BD or C3604BD
6	Gland Nut	CAC406 or C3771BD or C3604BD
7	Stem	C3771BD or BE
8	Handwheel	FC200
9	Hexagon Nut	C3771BD
10	Split Pin	C2600W
11	Packing	Non-Asbestos
12	Gasket	Non-Asbestos
13	Name Plate (※)	C2801P

(※) Option

HYDRAULIC INSPECTION

Rating	Hydraulic Inspection Mpa	
	Body	Seat
5K	1.05	0.77
10K	2.1	1.54

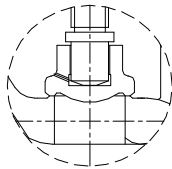
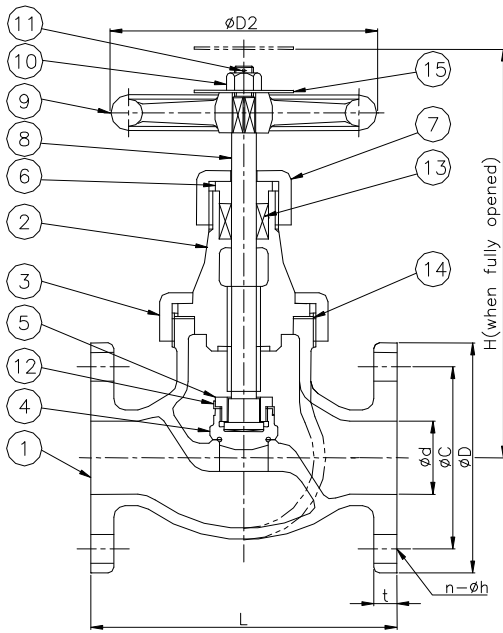
PRESSURE RATING

Applicable Standard No.	Reffer to JIS F7427	
Fluid Condition	Maximum working pressure Mpa	
Oil and Pulsation water	0.5	1.0
Saturated steam	0.2	0.2
Non-shock water of 120°C or less	0.7	1.4

DIMENTIONAL TABLE

Model No	WVBCFSJ05								
Standard	Reffer to JIS F7427 (F7367)								
Flange	JIS 5K FF								
Item	RISING STEM TYPE GATE VALVE								
Size	d	L	D	C	n-h	t	H	D2	Weight [kg]
15A	15	90	80	60	4-12	9	175	80	2.29
20A	20	100	85	65	4-12	10	200	80	2.98
25A	25	110	95	75	4-12	10	220	100	4.10
32A	32	130	115	90	4-15	12	250	100	5.79
40A	40	140	120	95	4-15	12	290	125	7.78

Model No	WVBCFSJ10								
Standard	Reffer to JIS F7427 (F7368)								
Flange	JIS 10K FF								
Item	RISING STEM TYPE GATE VALVE								
Size	d	L	D	C	n-h	t	H	D2	Weight [kg]
15A	15	100	95	70	4-15	12	175	80	2.96
20A	20	110	100	75	4-15	14	200	80	3.89
25A	25	120	125	90	4-19	14	220	100	5.82
32A	32	140	135	100	4-19	16	250	100	7.52
40A	40	150	140	105	4-19	16	290	125	9.71



Screw-down check valve

MATERIAL

No	Name of part	Material
1	Body	CAC406
2	Bonnet	CAC406 or C3771BD or BE
3	Bonnet Nut	CAC406 or C3771BD or BE
4	Disc	CAC406 or C3771BD or BE
5	Disc Nut	CAC406 or C3771BD or C3604BD
6	Packing Gland	CAC406 or C3771BD or C3604BD
7	Gland Nut	CAC406 or C3771BD or C3604BD
8	Stem	C3771BD or BE
9	Handwheel	FC200
10	Hexagon Nut	C3604BD
11	Split Pin	C2600W
12	Disc Lock Washer	C2600P
13	Packing	Non-Asbestos
14	Gasket	Non-Asbestos
15	Name Plate (※)	C2801P

(※) Option

HYDRAULIC INSPECTION

Rating	Hydraulic Inspection Mpa	
	Body	Seat
5K	1.05	0.77
16K	3.3	2.42

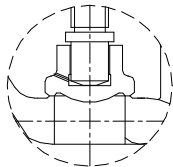
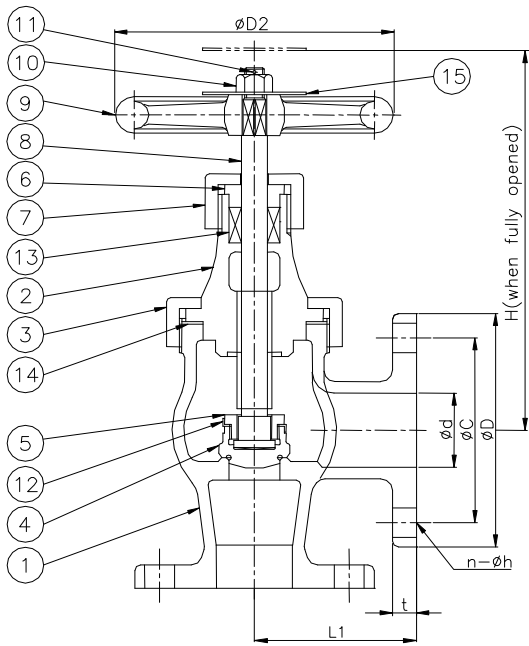
PRESSURE RATING

Applicable Standard No.	Refer to JIS F7427	
Fluid Condition	Maximum working pressure Mpa	
Steam of 205°C or less	0.5	1.6
Air, Gas, Oil and Pulsation water	0.5	1.6
Non-shock water of 120°C or less	0.7	2.2

DIMENTIONAL TABLE

Model No	WVBCFGU05 / WVBCFNUG05								
Standard	Refer to JIS F7427 (F7346 / F7411)								
Flange	JIS 5K FF								
Item	GLOBE VALVE / SCREW-DOWN CHECK GLOBE VALVE								
Size	d	L	D	C	n-h	t	H	D2	Weight [kg]
15A	15	100	80	60	4-12	9	155/150	80	2.21/2.12
20A	20	110	85	65	4-12	10	165/160	100	3.04/2.91
25A	25	120	95	75	4-12	10	185/185	125	3.97/3.82
32A	32	140	115	90	4-15	12	195/190	125	5.23/5.09
40A	40	160	120	95	4-15	12	210/205	140	6.94/6.71

Model No	WVBCFGU16 / WVBCFNUG16								
Standard	Refer to JIS F7427 (F7348 / F7413)								
Flange	JIS 16K FF								
Item	GLOBE VALVE / SCREW-DOWN CHECK GLOBE VALVE								
Size	d	L	D	C	n-h	t	H	D2	Weight [kg]
15A	15	110/100	95	70	4-15	12	155/150	80	2.96/2.87
20A	20	120/120	100	75	4-15	14	165/160	100	3.92/3.79
25A	25	130/130	125	90	4-19	14	185/185	125	5.65/5.44
32A	32	160/160	135	100	4-19	16	195/190	125	7.24/7.04
40A	40	180/180	140	105	4-19	16	210/205	140	9.12/8.89



Screw-down check valve

MATERIAL

No	Name of part	Material
1	Body	CAC406
2	Bonnet	CAC406 or C3771BD or BE
3	Bonnet Nut	CAC406 or C3771BD or BE
4	Disc	CAC406 or C3771BD or BE
5	Disc Nut	CAC406 or C3771BD or C3604BD
6	Packing Gland	CAC406 or C3771BD or C3604BD
7	Gland Nut	CAC406 or C3771BD or C3604BD
8	Stem	C3771BD or BE
9	Handwheel	FC200
10	Hexagon Nut	C3604BD
11	Split Pin	C2600W
12	Disc Lock Washer	C2600P
13	Packing	Non-Asbestos
14	Gasket	Non-Asbestos
15	Name Plate (※)	C2801P

(※) Option

HYDRAULIC INSPECTION

Rating	Hydraulic Inspection Mpa	
	Body	Seat
5K	1.05	0.77
16K	3.3	2.42

PRESSURE RATING

Applicable Standard No.	Refer to JIS F7427	
Fluid Condition	Maximum working pressure Mpa	
Steam of 205°C or less	0.5	1.6
Air, Gas, Oil and Pulsation water	0.5	1.6
Non-shock water of 120°C or less	0.7	2.2

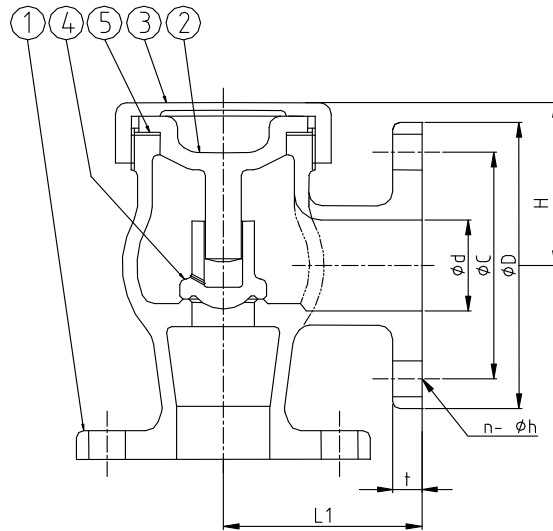
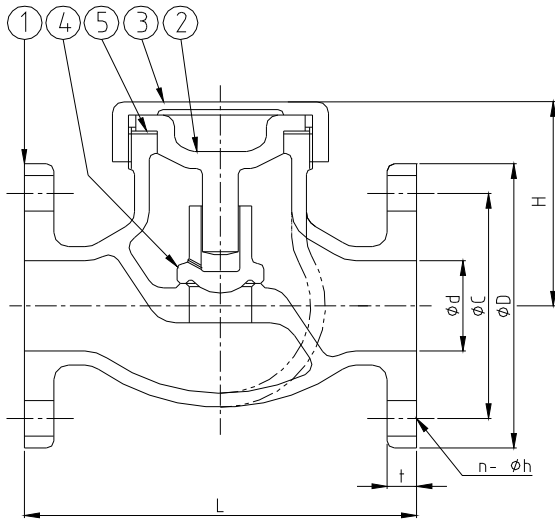
DIMENTIONAL TABLE

Model No	WVBCFLU05 / WVBCFNUL05								
Standard	Refer to JIS F7427 (F7347 / F7412)								
Flange	JIS 5K FF								
Item	ANGLE VALVE / SCREW-DOWN CHECK ANGLE VALVE								
Size	d	L1	D	C	n-h	t	H	D2	Weight [kg]
15A	15	55	80	60	4-12	9	145/140	80	2.15/2.07
20A	20	60	85	65	4-12	10	155/150	100	2.94/2.81
25A	25	65	95	75	4-12	10	175/175	125	3.82/3.67
32A	32	80	115	90	4-15	12	175/170	125	4.99/4.85
40A	40	85	120	95	4-15	12	190/180	140	6.40/6.17

Model No	WVBCFLU16 / WVBCFNUL16								
Standard	Refer to JIS F7427 (F7349 / F7414)								
Flange	JIS 16K FF								
Item	ANGLE VALVE / SCREW-DOWN CHECK ANGLE VALVE								
Size	d	L1	D	C	n-h	t	H	D2	Weight [kg]
15A	15	70	95	70	4-15	12	145/140	80	2.94/2.86
20A	20	75	100	75	4-15	14	155/150	100	3.88/3.75
25A	25	85	125	90	4-19	14	175/175	125	5.53/5.38
32A	32	95	135	100	4-19	16	175/170	125	6.98/6.84
40A	40	100	140	105	4-19	16	190/180	140	8.57/8.34

WVBCFLNUG/WVBCFLNUL

CAST BRONZE UB-TYPE LIFT CHECK VALVE FOR MARINE USE - 5K, 16K



MATERIAL

No	Name of part	Material
1	Body	CAC406
2	Disc Guide	CAC406 or C3771BD or BE
3	Cover Nut	CAC406 or C3771BD or BE
4	Disc	CAC406 or C3771BD or BE
5	Gasket	Non-Asbestos

HYDRAULIC INSPECTION

Rating	Hydraulic Inspection Mpa	
	Body	Seat
5K	1.05	0.77~0.40
16K	3.3	2.42~0.40

PRESSURE RATING

Applicable Standard No.	Reffer to JIS F7427	
Fluid Condition	Maximum working pressure Mpa	
Oil and Pulsation water	0.5	1.6
Non-shock water of 120°C or less	0.7	2.2

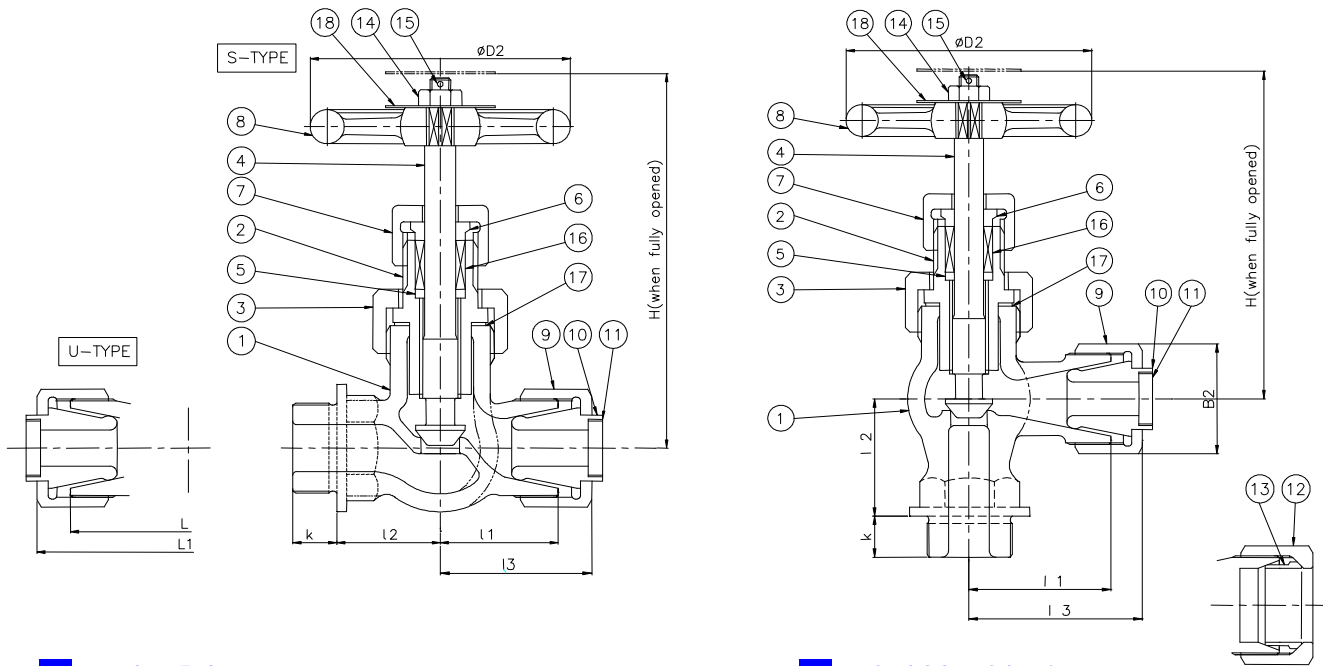
DIMENTIONAL TABLE

Model No	WVBCFLNUG05 / WVBCFLNUL05							
Standard	Reffer to JIS F7427 (F7415 / F7416)							
Flange	JIS 5K FF							
Item	LIFT CHECK GLOBE VALVE / LIFT CHECK ANGLE VALVE							
Size	d	L/L1	D	C	n-h	t	H	Weight [kg]
15A	15	100/55	80	60	4-12	9	66/56	1.62/1.57
20A	20	110/60	85	65	4-12	10	71/59	2.17/2.07
25A	25	120/65	95	75	4-12	10	81/67	2.80/2.65
32A	32	140/80	115	90	4-15	12	83/65	3.92/3.68
40A	40	160/85	120	95	4-15	12	91/69	5.49/4.95

Model No	WVBCFLNUG16 / WVBCFLNUL16							
Standard	Reffer to JIS F7427 (F7417 / F7418)							
Flange	JIS 16K FF							
Item	LIFT CHECK GLOBE VALVE / LIFT CHECK ANGLE VALVE							
Size	d	L/L1	D	C	n-h	t	H	Weight [kg]
15A	15	110/70	95	70	4-15	12	66/56	2.37/2.36
20A	20	120/75	100	75	4-15	14	71/59	3.05/3.01
25A	25	130/85	125	90	4-19	14	81/67	4.42/4.36
32A	32	160/95	135	100	4-19	16	83/65	5.87/5.67
40A	40	180/100	140	105	4-19	16	91/69	7.67/7.12

WVBCFGT/WVBCFLT

CAST BRONZE GLOBE VALVE FOR MARINE USE - 20K



MATERIAL

No	Name of part	Material
1	Body	CAC406
2	Bonnet	CAC406 or C3771BD or BE or C3604BD
3	Bonnet Nut	CAC406 or C3771BD or BE or C3604BD
4	Stem	C3771BD or C3771BE
5	Packing Bush	CAC406 or C3771BD or C3604BD
6	Packing Gland	CAC406 or C3771BD or C3604BD
7	Gland Nut	CAC406 or C3771BD or C3604BD
8	Handwheel	FC200
9	Union Nut	CAC406 or C3771BD
10	Nipple for Copper Pipe	CAC201 or C1100BD
11	Nipple for Steel Pipe	S15C
12	Union Nut	C3604BD
13	Sleeve	C3604BD
14	Hexagon Nut	C3604BD
15	Split Pin	C2600W
16	Packing	Non-Asbestos
17	Gasket	Non-Asbestos
18	Name Plate(※)	C2801P

(※) Option

CLASSIFICATION

Type	Type of connection
S	Union nut and thread
U	Both side union nut

HYDRAULIC INSPECTION

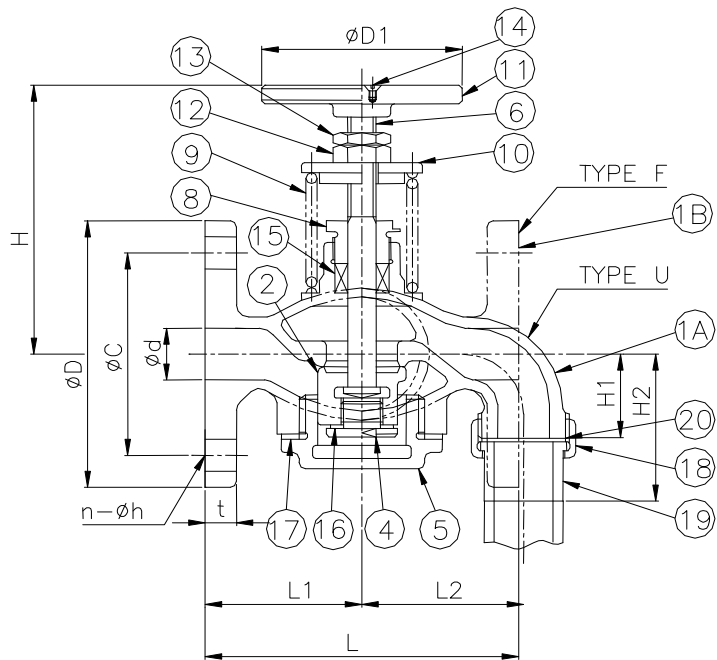
Test pressure Mpa	
Body	Seat
4.2	3.08

PRESSURE RATING

Applicable Standard No.	Reffer to JIS F7427
Fluid Condition	Maximum working pressure Mpa
Steam of 205°C or less	1.6
Air, Gas, Oil and Pulsation water	2.0
Non-shock water of 120°C or less	2.8

DIMENTIONAL TABLE

Model No	WVBCFGT20 / WVBCFLT20												
Standard	Reffer to JIS F7427 (F7388 / F7389)												
Rating	JIS 20K												
Item	GLOBE VALVE / ANGLE VALVE												
Size	Type	d	L	L1	l1	l2	l3	k	D	H	D2	B2	Weight [kg]
6A	Globe S	6	-	-	32	32	41	12	28	100	63	30	0.81
10A	Globe S	10	-	-	36	35	48	16	34	115	80	41	1.22
6A	Globe U	6	64	82	-	-	-	-	-	100	63	30	0.85
10A	Globe U	10	72	96	-	-	-	-	-	115	80	41	1.37
6A	Angle S	6	-	-	32	32	41	12	28	95	63	30	0.83
10A	Angle S	10	-	-	39	35	51	16	34	105	80	41	1.19



MATERIAL

No	Name of part	Material
1A	Body(Type U)	CAC406
1B	Body(Type F)	CAC406
2	Disc	C3771BE
4	Plug	C3771BD
5	Bonnet	S25C
6	Stem	C3771BE
8	Packing Gland	C3771BD
9	Spring	SWP-A
10	Spring Support	SS400
11	Handle	SS400
12	Hexagon Nut	C3604BD
13	Hexagon Nut	C3604BD
14	Set Screw	C2700W
15	Packing	NON-ASBESTOS
16	Gasket	NON-ASBESTOS
17	Gasket	NON-ASBESTOS
18	Union Nut	SS400
19	Nipple	SS400
20	Gasket	NON-ASBESTOS

HYDRAULIC INSPECTION

Test pressure Mpa	
Body	Seat
0.15	0.11

PRESSURE RATING

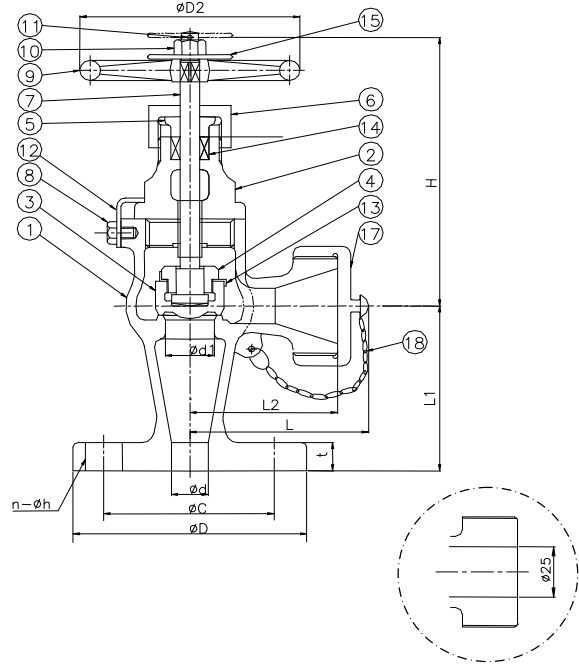
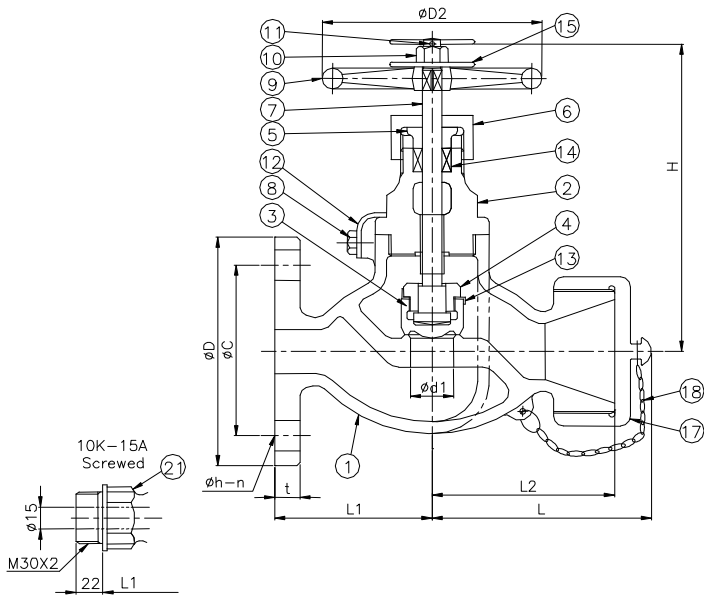
Applicable Standard No.	Reffer to JIS F7398
Fluid condition	Maximum working pressure Mpa
Oil	0.098

DIMENTIONAL TABLE

Model No	WVBCFSD05 / WVBCFSD10														
Standard	Reffer to JIS F7398														
Flange	JIS 5K FF / JIS 10K FF														
Item	FUEL OIL TANK SELF-CLOSING DRAIN VALVE														
Size	d	L	L1	L2	D	C	n-h	t	H	H1	H2	D1	Weight[kg]U	Weight[kg]F	
25A	25	130	65	65	95/125	75/90	4-12/4-19	14	130	40	67	70	3.87	4.7	
40A	40	180	90	100	120/140	95/104	4-15/4-19	16	165	60	96	80	7.43	8.1	

WVBCFHG/WVBCFHL

CAST BRONZE HOSE VALVE FOR MARINE USE - 5K, 10K



Nominal Dia. 25A

MATERIAL

No	Name of part	Material
1	Body	CAC406
2	Bonnet	CAC406 or C3771BD or BE
3	Disc	CAC406 or C3771BD or BE
4	Disc Nut	CAC406 or C3771BD or BE
5	Packing Gland	CAC406 or C3771BD or BE
6	Gland Nut	CAC406 or C3771BD or BE
7	Stem	C3771BD or C3771BE
8	Set Screw	C2700W
9	Handwheel	FC200
10	Hexagon Nut	C3604BD
11	Split Pin	C2600W
12	Lock Plate	C2600P
13	Disc Lock Washer	C2600P
14	Packing	Non-Asbestos
15	Name Plate (※)	C2801P
17	Cap	CAC406
18	Chain	C2600W

(※) Option

HYDRAULIC INSPECTION

Rating	Test pressure Mpa		
	Body	Seat	Connection
5K	1.03	0.75	0.77
10K	2.06	1.51	1.54

PRESSURE RATING

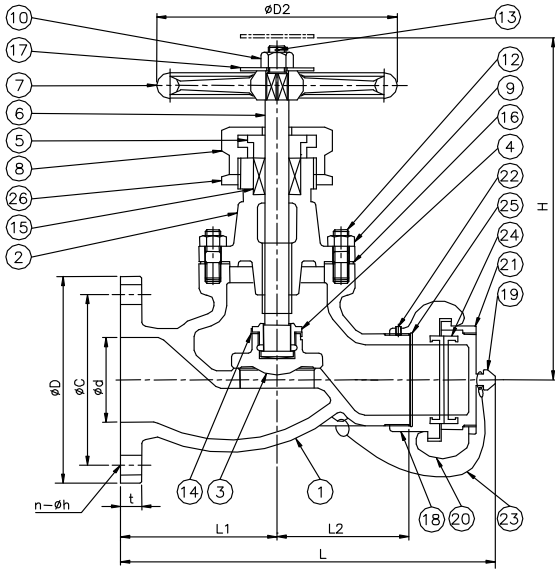
Applicable Standard No.	Reffer to JIS F7427			
	Maximum working pressure Mpa			
	Rating 5K		Rating 10K	
Fluid Condition	15A	25A	15A	25A
Steam of 205°C or less	0.5	-	1.0	-
Air	0.5	-	1.0	-
Pulsation water	0.5	0.5	1.0	1.0
Non-shock water of 120°C or less	0.7	0.7	1.4	1.4

DIMENTIONAL TABLE

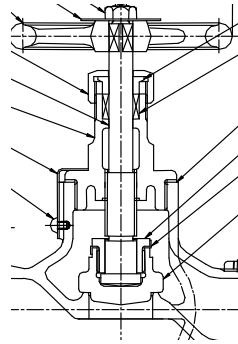
Model No	WVBCFHG05 / WVBCFHG10 / WVBCFHL05 / WVBCFHL10											
Standard	Reffer to JIS F7427 (F7334)											
Flange	JIS 5K FF / JIS 10K FF											
Item	HOSE GLOBE VALVE / HOSE ANGLE VALVE											
Size	Type	d	L	L1	L2	D	C	n-h	t	H	D2	Weight[kg]
5K 15A	Globe	15	73	50	60	80	60	4-12	9	130	80	2.51
5K 25A	Globe	25	78	60	65	95	75	4-12	10	160	125	3.55
5K 15A	Angle	15	68	55	55	80	60	4-12	9	120	80	2.41
5K 25A	Angle	25	98	65	65	95	75	4-12	10	145	125	3.44
10K 15A	Globe	15	73	55	60	95	70	4-15	12	130	80	2.76
10K 25A	Globe	25	83	65	70	125	90	4-19	14	160	125	4.15
10K 15A	Angle	15	73	70	60	95	70	4-15	12	120	80	2.72
10K 25A	Angle	25	83	85	70	125	90	4-19	14	145	125	4.04

WVBCFHG/WVBCFHL

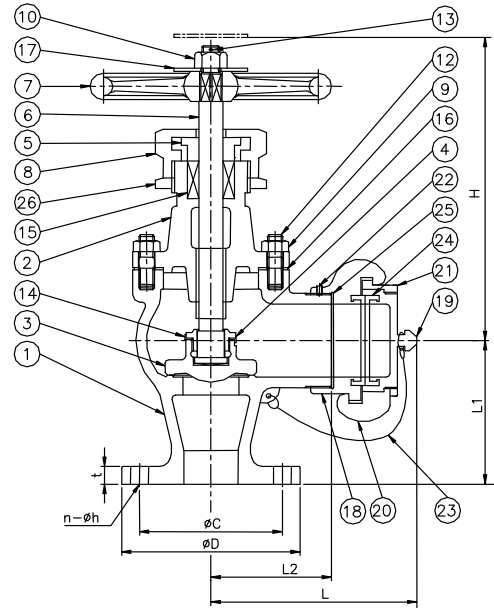
CAST BRONZE HOSE VALVE FOR MARINE USE - 5K, 10K



Dia. 50A and 65A



Dia. 40A



Dia. 50A and 65A

HYDRAULIC INSPECTION

Rating	Test pressure Mpa		
	Body	Seat	Connection
5K	1.03	0.75	0.77
10K	2.06	1.51	1.54

PRESSURE RATING

Applicable Standard No.	Reffer to JIS F7427	
	Maximum working pressure Mpa	
Fluid Condition	Rating 5K	Rating 10K
Pulsation water	0.5	1.0
Non-shock water of 120°C or less	0.7	1.4

COUPLINGS

Kind of Couplings	
Nakajima	Storz
Machino	BS336
ANSI B181.1	Nor

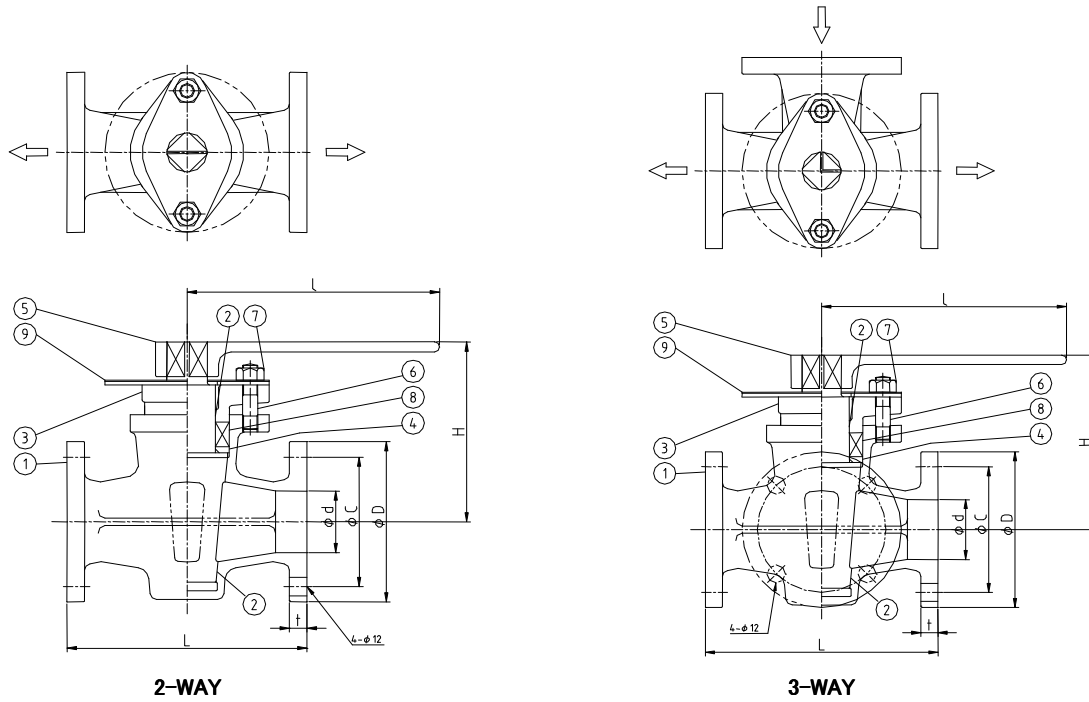
DIMENTIONAL TABLE

Model No	WVBCFHG05 / WVBCFHG10 / WVBCFHL05 / WVBCFHL10												
Standard	Reffer to JIS F7427 (F7334)												
Flange	JIS 5K FF / JIS 10K FF												
Item	HOSE GLOBE VALVE / HOSE ANGLE VALVE												
Size	Type	d	L	L1	L2	D	C	n-h	t	H	D2	Weight[kg]	
5K 40A	Globe	40	208.5	80	80	120	95	4-15	12	190	140	6.26	
5K 40A	Angle	40	123.5	85	75	120	95	4-15	12	165	140	5.91	
10K 40A	Globe	40	223.5	90	85	140	105	4-19	16	190	140	8.43	
10K 50A	Globe	50	280	87	85	155	120	4-19	16	185	160	12.3	
10K 65A	Globe	65	320	99	101	175	140	4-19	18	215	180	22.2	
10K 40A	Angle	40	123.5	100	75	140	105	4-19	16	165	140	8.19	
10K 50A	Angle	50	188	75	80	155	120	4-19	16	280	140	10.5	
10K 65A	Angle	65	215	90	95	175	140	4-19	18	310	160	15.1	

MATERIAL

No	Name of part	Material
1	Body	CAC406
2	Bonnet	CAC406 or C3771BD or BE
3	Disc	CAC406 or C3771BD or BE
4	Disc Nut	CAC406 or C3771BD or BE
5	Packing Gland	CAC406 or C3771BD or BE
6	Stem	C3771BD or C3771BE
7	Handwheel	FC200
8	Gland Nut	CAC406 or C3771BD or BE
9	Hexagon Nut	
10	Hexagon Nut	C3604BD
12	Stud Bolt	
13	Split Pin	C2600W
14	Disc Lock Washer	C2600P
15	Packing	Non-Asbestos
16	Gasket	Non-Asbestos
17	Name Plate (※)	C2801P
18	Coupling	CAC406
26	Lock Nut	BsBFD2

(※) Option



2-WAY

3-WAY

MATERIAL

No	Name of part	Material
1	Body	CAC406
2	Plug	CAC406
3	Packing gland	CAC406 or C3771BD
4	Bush	CAC406 or C3771BD
5	Lever	S25C
6	Stud Bolt	C3771BD
7	Hexagon Nut	C3771BD
8	Packing	Non-Asbestos
9	Name Plate	C2801P

CLASSIFICATION

Type	Direction of Cock
2WAY	Straight
3WAY	L-Port
3WAY	T-Port

HYDRAULIC INSPECTION

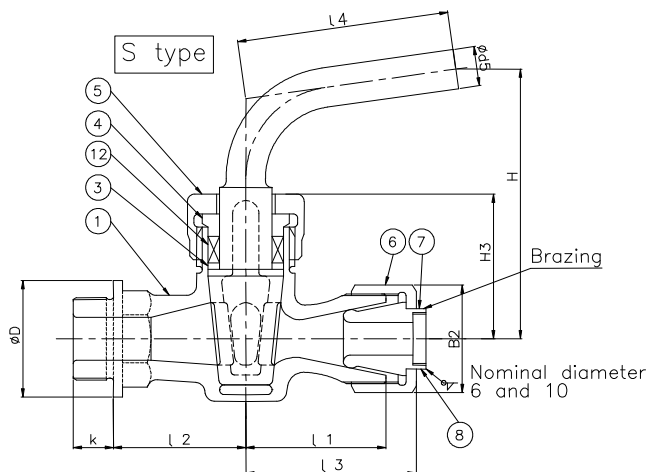
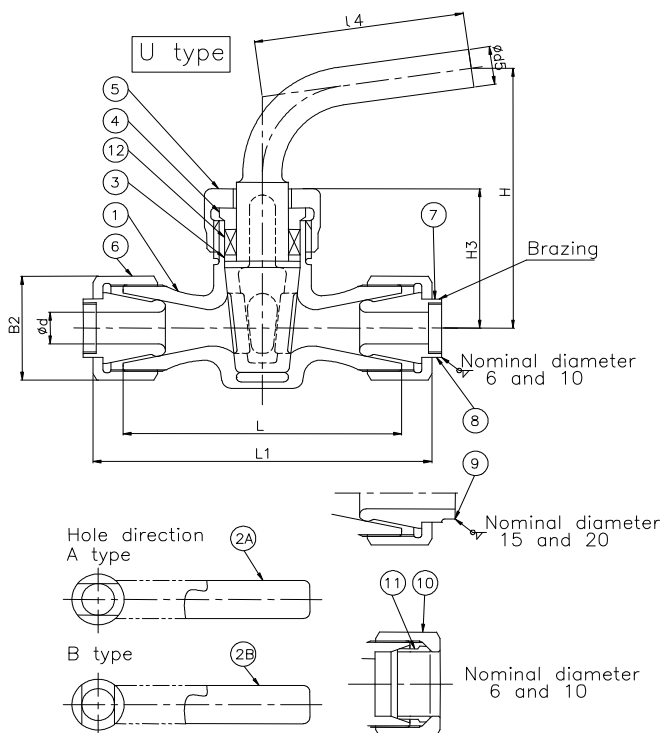
Test pressure Mpa	
Body	Plug
0.75	0.55

PRESSURE RATING

Applicable Standard No.	Reffer to JIS F7381
Fluid Condition	Maximum working pressure Mpa
Water and Oil	0.49

DIMENTIONAL TABLE

Model No	WVBCFC05										
Standard	Reffer to JIS F7381										
Rating	JIS 5K										
Item	GLOBE VALVE										
Size	d	L	L1	D	C	n-h	t	H	l	2WAY	3WAY
										Weight [kg]	Weight [kg]
25A	25	130	65	95	75	4-12	10	105	160	3.13	3.81
32A	32	160	80	115	90	4-12	12	125	180	5.02	6.13
40A	40	170	85	120	95	4-15	12	135	190	6.66	7.93
50A	50	190	95	130	105	4-15	14	163	200	10.0	11.8
65A	65	220	110	155	130	4-15	14	201	250	16.7	19.0



MATERIAL

No	Name of part	Material
1	Body	CAC406
2A	Plug A	CAC406
2B	Plug B	CAC406
3	Packing Bush	BC6 or C3771BD
4	Packing Gland	BC6 or C3771BD
5	Gland Nut	BC6 or C3771BD
6	Union Nut	BC6 or C3771BD
7	Nipple for Copper Pipe	CAC201 or C1100BD
8	Nipple for Steel Pipe	S15C
9	Nipple for Steel Pipe	S15C
10	Union Nut	C3604BD
11	Sleeve	C3604BD
12	Packing	Non-Asbestos

CLASSIFICATION

Type	Type of connection
S	Union nut and thread
U	Both side union nut

HYDRAULIC INSPECTION

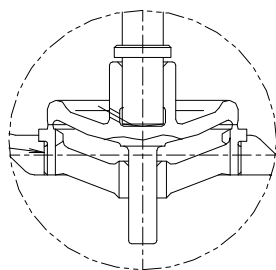
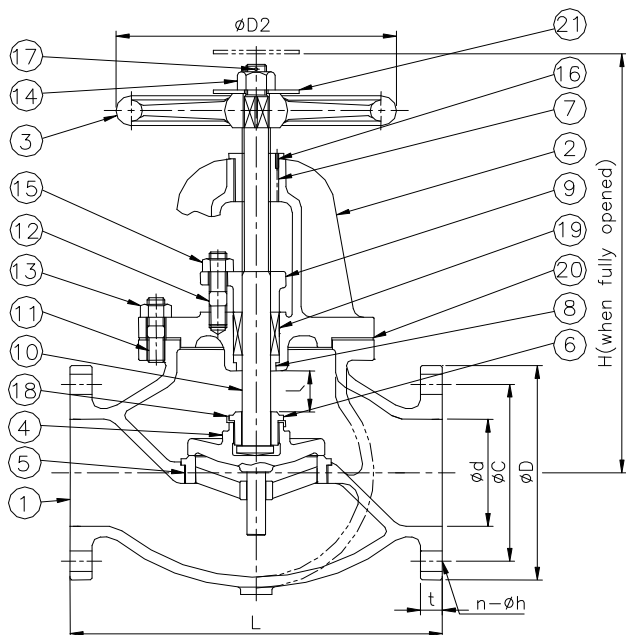
Nominal dia	Hydraulic Inspection Mpa	
	Body	Plug
6 and 10	2.94	2.16
15 and 20	2.36	1.73

PRESSURE RATING

Applicable standard No.	Refer to JIS F7387	
Fluid Condition	Maximum working pressure Mpa	
	6A and 10A	15A and 20A
Saturated steam	0.98	0.49
Oil and Pulsation Water	1.57	1.27
Non-shock water of 120°C or less	1.96	1.57

DIMENTIONAL TABLE

Model No	WVBCFCS16											
Standard	Refer to JIS F7387											
Rating	JIS 16K											
Item	COCKS											
Size	Type	d	l1	l2	l3	k	H	l4	H3	d5	B2	Weight [kg]
6A	S	6	28	28	37	12	65	55	36	10	30	0.46
10A	S	10	40	35	52	16	73	65	44	12	41	0.85
15A	S	15	45	45	58	22	92	75	56	16	46	1.46
20A	S	20	50	50	65	24	104	85	62	17	50	2.09
Size	Type	d	L	L1	-	-	H	l4	H3	d5	B2	Weight [kg]
6A	U	6	56	74	-	-	65	55	36	10	30	0.50
10A	U	10	80	104	-	-	73	65	44	12	41	1.00



Screw-down check valve

MATERIAL

No	Name of part	Material	
		Class B	Class S
1	Body	FCD400	FCD400
2	Bonnet	FCD400	FCD400
3	Hand Wheel	FC200	FC200
4	Disc	CAC406	SCS2
5	Valve Seat	CAC406	SCS2
6	Disc Nut	CAC406	SUS420J2
7	Screwed Bonnet Bush	CAC406	CAC406
8	Packing Bush	CAC406	SUS420J2
9	Packing Gland	CAC406	CAC406
10	Stem	C3771BD or BE	SUS403
11	Stud Bolt	SS400	SS400
12	Stud Bolt	C3771BD	C3771BD
13	Hexagon Nut	SS400	SS400
14	Hexagon Nut	C3604BD	C3604BD
15	Hexagon Nut	C3604BD	C3604BD
16	Lock Pin	SS400	SS400
17	Split Pin	C2600W	C2600W
18	Disc Lock Washer	C2600P	SUS304
19	Packing	Non-Asbestos	Non-Asbestos
20	Gasket	Non-Asbestos	Non-Asbestos
21	Name Plate (※)	C2801P	C2801P

(※) Option

HYDRAULIC INSPECTION

Rating	Test pressure Mpa	
	Body	Seat
5K	1.05	0.77
10K	2.1	1.54
16K	3.3	2.42

PRESSURE RATING

Applicable Standard No.	Reffer to JIS F7505					
	Maximum working pressure Mpa [kgf/cm ²]					
	Rating 5K		Rating 10K		Rating 16K	
Fluid Condition	Class B	Class S	Class B	Class S	Class B	Class S
	Steam of 220°C or less	-	0.5	-	1.0	-
Steam of 205°C or less	0.5	0.5	1.0	1.0	1.6	1.6
Air, Gas, Oil and Pulsation water	0.5	0.5	1.0	1.0	1.6	1.6
Non-shock water of 120°C or less	0.7	0.7	1.4	1.4	2.2	2.2

DIMENSIONAL TABLE

Model No	WVFCDFG05 / WVFCDFNG05								
Standard	Reffer to JIS F7505 (F7305※ / F7353※)								
Flange	JIS 5K FF								
Item	GLOBE VALVE / SCREW-DOWN CHECK GLOBE VALVE								
Size	d	L	D	C	n-h	t	H	D2	Weight [kg]
50A	50	210	130	105	4-15	16	270/270	160	14.7/14.8
65A	65	250	155	130	4-15	18	300/290	180	21.3/21.3
80A	80	280	180	145	4-19	18	310/300	180	27.7/27.6
100A	100	340	200	165	8-19	20	360/350	224	40.8/40.4
125A	125	410	235	200	8-19	20	390/380	250	57.6/57.9
150A	150	480	265	230	8-19	22	445/430	280	80.3/80.9
200A	200	570	320	280	8-23	24	530/505	315	139/139
250A	250	740	385	345	12-23	26	650/620	335	246/243
300A	300	840	430	390	12-23	28	740/715	400	377/377

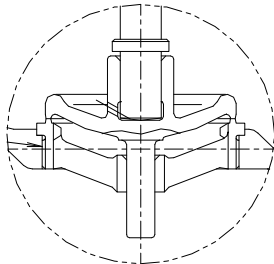
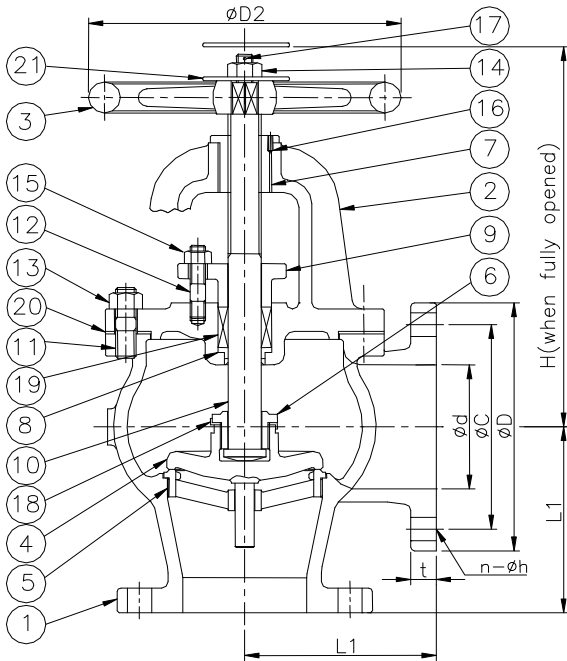
※ Dimention : Reffer to F7305/F7353

Model No	WVFCDFG10 / WVFCDFNG10								
Standard	Reffer to JIS F7505 (F7307※ / F7375※)								
Flange	JIS 10K FF								
Item	GLOBE VALVE / SCREW-DOWN CHECK GLOBE VALVE								
Size	d	L	D	C	n-h	t	H	D2	Weight [kg]
50A	50	220	155	120	4-19	20	285/285	160	19.9/19.9
65A	65	270	175	140	4-19	22	310/305	200	28.7/28.6
80A	80	300	185	150	8-19	22	320/315	200	32.4/32.5
100A	100	350	210	175	8-19	24	370/360	250	48.7/48.7
125A	125	420	250	210	8-23	24	420/410	280	73.1/73
150A	150	490	280	240	8-23	26	470/455	315	104/104
200A	200	570	330	290	12-23	26	555/530	355	162/161
250A	250	740	400	355	12-25	30	680/-	450	304/-
300A	300	840	445	400	16-25	32	770/-	500	458/-

※ Dimention : Reffer to F7307/F7375

Model No	WVFCDFG16 / WVFCDFNG16								
Standard	Reffer to JIS F7505 (F7309※ / F7377※)								
Flange	JIS 16K FF								
Item	GLOBE VALVE / SCREW-DOWN CHECK GLOBE VALVE								
Size	d	L	D	C	n-h	t	H	D2	Weight [kg]
50A	50	220	155	120	8-19	20	285/285	160	19.6/19.6
65A	65	270	175	140	8-19	22	310/305	200	28.3/28.2
80A	80	300	200	160	8-23	24	340/335	224	40.4/40.5
100A	100	350	225	185	8-23	26	385/375	250	56.9/56.9
125A	125	430	270	225	8-25	26	455/440	315	89.5/89.5
150A	150	500	305	260	12-25	28	510/500	355	123/123
200A	200	570	350	305	12-25	30	630/-	450	188/-

※ Dimention : Reffer to F7309/F7377



Screw-down check valve

MATERIAL

No	Name of part	Material	
		Class B	Class S
1	Body	FCD400	FCD400
2	Bonnet	FCD400	FCD400
3	Hand Wheel	FC200	FC200
4	Disc	CAC406	SCS2
5	Valve Seat	CAC406	SCS2
6	Disc Nut	CAC406	SUS420J2
7	Screwed Bonnet Bush	CAC406	CAC406
8	Packing Bush	CAC406	SUS420J2
9	Packing Gland	CAC406	CAC406
10	Stem	C3771BD or BE	SUS403
11	Stud Bolt	SS400	SS400
12	Stud Bolt	C3771BD	C3771BD
13	Hexagon Nut	SS400	SS400
14	Hexagon Nut	C3604BD	C3604BD
15	Hexagon Nut	C3604BD	C3604BD
16	Lock Pin	SS400	SS400
17	Split Pin	C2600W	C2600W
18	Disc Lock Washer	C2600P	SUS304
19	Packing	Non-Asbestos	Non-Asbestos
20	Gasket	Non-Asbestos	Non-Asbestos
21	Name Plate (※)	C2801P	C2801P

(※) Option

HYDRAULIC INSPECTION

Rating	Test pressure Mpa	
	Body	Seat
5K	1.05	0.77
10K	2.1	1.54
16K	3.3	2.42

PRESSURE RATING

Applicable Standard No.	Reffer to JIS F7505					
	Maximum working pressure Mpa [kgf/cm ²]					
	Rating 5K		Rating 10K		Rating 16K	
Fluid Condition	Class B	Class S	Class B	Class S	Class B	Class S
	Steam of 220°C or less	-	0.5	-	1.0	-
Steam of 205°C or less	0.5	0.5	1.0	1.0	1.6	1.6
Air, Gas, Oil and Pulsation water	0.5	0.5	1.0	1.0	1.6	1.6
Non-shock water of 120°C or less	0.7	0.7	1.4	1.4	2.2	2.2

DIMENSIONAL TABLE

Model No	WVFCDFL05 / WVFCDFNL05								
Standard	Refer to JIS F7505 (F7306※ / F7354※)								
Flange	JIS 5K FF								
Item	ANGLE VALVE / SCREW-DOWN CHECK ANGLE VALVE								
Size	d	L	D	C	n-h	t	H	D2	Weight [kg]
50A	50	100	130	105	4-15	16	240/240	160	12.9/13.0
65A	65	115	155	130	4-15	18	255/245	180	18.2/18.2
80A	80	130	180	145	4-19	18	265/255	180	23.4/23.3
100A	100	150	200	165	8-19	20	310/300	224	33.7/33.5
125A	125	170	235	200	8-19	20	330/320	250	46.2/46.5
150A	150	190	265	230	8-19	22	380/365	280	63.4/64
200A	200	220	320	280	8-23	24	450/425	315	105/104
250A	250	275	385	345	12-23	26	540/510	335	176/175
300A	300	310	430	390	12-23	28	610/585	400	243/243

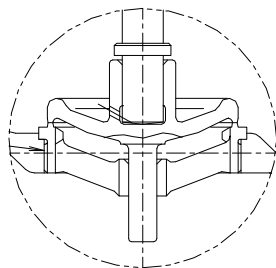
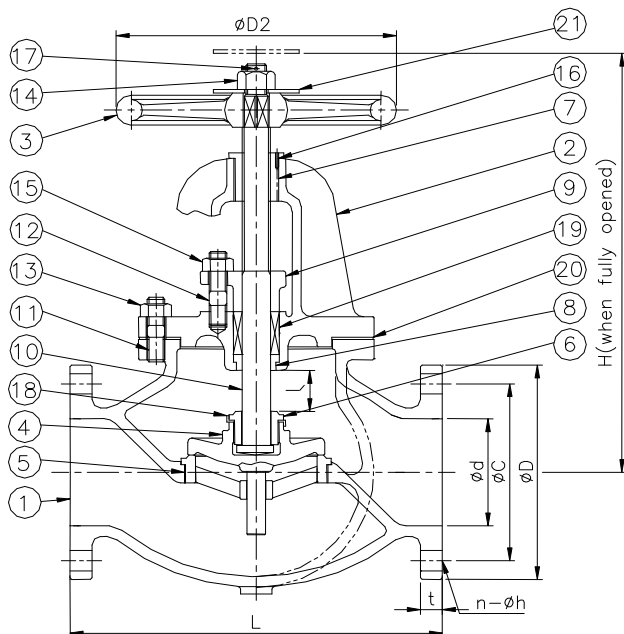
※ Dimension : Refer to F7306/F7354

Model No	WVFCDFL10 / WVFCDFNL10								
Standard	Refer to JIS F7505 (F7308※ / F7376※)								
Flange	JIS 10K FF								
Item	ANGLE VALVE / SCREW-DOWN CHECK ANGLE VALVE								
Size	d	L	D	C	n-h	t	H	D2	Weight [kg]
50A	50	120	155	120	4-19	20	255/255	160	18.2/18.2
65A	65	130	175	140	4-19	22	270/260	200	25.4/25.3
80A	80	140	185	150	8-19	22	275/270	200	27.4/27.5
100A	100	160	210	175	8-19	24	315/305	250	40.6/40.6
125A	125	180	250	210	8-23	24	360/350	280	69.9/69.8
150A	150	205	280	240	8-23	26	405/390	315	81.0/81.2
200A	200	230	330	290	12-23	26	475/450	355	125/124
250A	250	290	400	355	12-25	30	570/-	450	211/-
300A	300	320	445	400	16-25	32	645/-	500	293/-

※ Dimension : Refer to F7308/F7376

Model No	WVFCDFL16 / WVFCDFNL16								
Standard	Refer to JIS F7505 (F7310※ / F7378※)								
Flange	JIS 16K FF								
Item	ANGLE VALVE / SCREW-DOWN CHECK ANGLE VALVE								
Size	d	L	D	C	n-h	t	H	D2	Weight [kg]
50A	50	120	155	120	8-19	20	255/255	160	18.0/18.0
65A	65	130	175	140	8-19	22	270/260	200	25.0/24.9
80A	80	150	200	160	8-23	24	295/290	224	35.7/35.8
100A	100	170	225	185	8-23	26	330/320	250	49.2/49.2
125A	125	200	270	225	8-25	26	390/375	315	76.1/76.1
150A	150	225	305	260	12-25	28	435/425	355	103/103
200A	200	250	350	305	12-25	30	540/-	450	155/-

※ Dimension : Refer to F7310/F7378



Screw-down check valve

MATERIAL

No	Name of part	Material	
		Class B	Class S
1	Body	FC200	FC200
2	Bonnet	FC200	FC200
3	Hand Wheel	FC200	FC200
4	Disc	CAC406	SCS2
5	Valve Seat	CAC406	SCS2
6	Disc Nut	CAC406	SUS420J2
7	Screwed Bonnet Bush	CAC406	CAC406
8	Packing Bush	CAC406	SUS420J2
9	Packing Gland	CAC406	CAC406
10	Stem	C3771BD or BE	SUS403
11	Stud Bolt	SS400	SS400
12	Stud Bolt	C3771BD	C3771BD
13	Hexagon Nut	SS400	SS400
14	Hexagon Nut	C3604BD	C3604BD
15	Hexagon Nut	C3604BD	C3604BD
16	Lock Pin	SS400	SS400
17	Split Pin	C2600W	C2600W
18	Disc Lock Washer	C2600P	SUS304
19	Packing	Non-Asbestos	Non-Asbestos
20	Gasket	Non-Asbestos	Non-Asbestos
21	Name Plate (※)	C2801P	C2801P

(※) Option

HYDRAULIC INSPECTION

Rating	Nominal dia	Test pressure Mpa	
		Body	Seat
5K	300 or less	1.03	0.76
	350 & 400	0.88	0.65
10K	200 or less	2.06	1.51
	250 & more	1.47	1.08
16K	50 to 200	3.24	2.38

PRESSURE RATING

Applicable Standard No.	Reffer to JIS F7425									
	Maximum working pressure Mpa [kgf/cm ²]									
	Rating 5K				Rating 10K				Rating 16K	
	200A or less		250A & 300A	350A & 400A	200A or less		250A or more		50A to 200A	
Class B	Class S	Class B	Class B	Class B	Class S	Class B	Class S	Class B	Class S	
Steam of 230°C or less	-	0.49	-	-	-	0.98	-	-	-	1.57
Steam of 205°C or less	0.49	0.49	-	-	0.98	0.98	-	-	1.57	1.57
Saturated steam	0.49	0.49	-	-	0.98	0.98	0.49	0.49	1.57	1.57
Air and Gas	0.49	0.49	0.49	-	0.98	0.98	-	-	1.57	1.57
Oil and Pulsation water	0.49	0.49	0.49	0.49	0.98	0.98	0.98	0.98	1.57	1.57
Non-shock water of 120°C or less	0.69	0.69	0.69	0.59	1.37	1.37	0.98	0.98	2.16	2.16

DIMENSIONAL TABLE

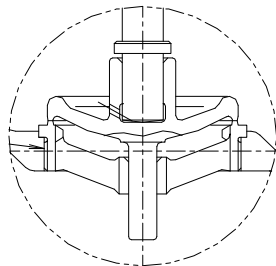
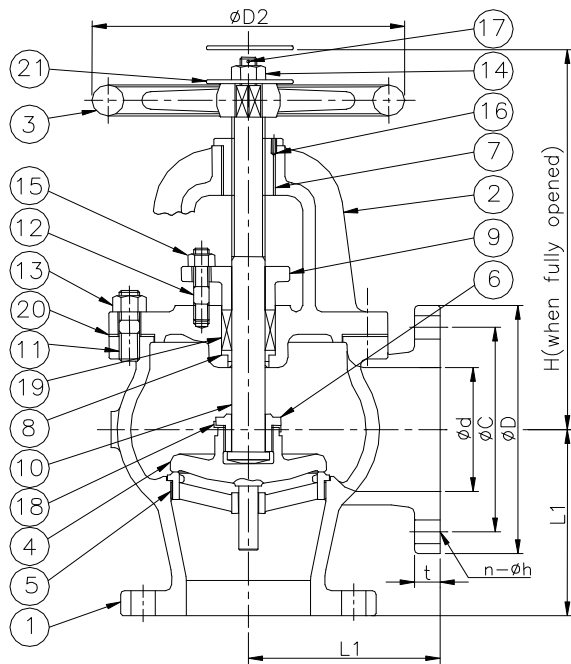
Model No	WVFCFG05 / WVFCFNG05								
Standard	Reffer to JIS F7425 (F7305 / F7353)								
Flange	JIS 5K FF								
Item	GLOBE VALVE / SCREW-DOWN CHECK GLOBE VALVE								
Size	d	L	D	C	n-h	t	H	D2	Weight [kg]
50A	50	210	130	105	4-15	16	270/270	160	14.7/14.8
65A	65	250	155	130	4-15	18	300/290	180	21.3/21.3
80A	80	280	180	145	4-19	18	310/300	180	27.7/27.6
100A	100	340	200	165	8-19	20	360/350	224	40.8/40.4
125A	125	410	235	200	8-19	20	390/380	250	57.6/57.9
150A	150	480	265	230	8-19	22	445/430	280	80.3/80.9
200A	200	570	320	280	8-23	24	530/505	315	139/139
250A	250	740	385	345	12-23	26	650/620	335	246/243
300A	300	840	430	390	12-23	28	740/715	400	377/377
350A	335	940	480	435	12-25	30	840/815	500	462/463
400A	380	1050	540	495	16-25	30	940/905	560	647/643

Model No	WVFCFG10 / WVFCFNG10								
Standard	Reffer to JIS F7425 (F7307 / F7375)								
Flange	JIS 10K FF								
Item	GLOBE VALVE / SCREW-DOWN CHECK GLOBE VALVE								
Size	d	L	D	C	n-h	t	H	D2	Weight [kg]
50A	50	220	155	120	4-19	20	285/285	160	19.9/19.9
65A	65	270	175	140	4-19	22	310/305	200	28.7/28.6
80A	80	300	185	150	8-19	22	320/315	200	32.4/32.5
100A	100	350	210	175	8-19	24	370/360	250	48.7/48.7
125A	125	420	250	210	8-23	24	420/410	280	73.1/73
150A	150	490	280	240	8-23	26	470/455	315	104/104
200A	200	570	330	290	12-23	26	555/530	355	162/161
250A	250	740	400	355	12-25	30	680/-	450	304/-
300A	300	840	445	400	16-25	32	770/-	500	458/-

Model No	WVFCFG16 / WVFCFNG16								
Standard	Reffer to JIS F7425 (F7309 / F7377)								
Flange	JIS 16K FF								
Item	GLOBE VALVE / SCREW-DOWN CHECK GLOBE VALVE								
Size	d	L	D	C	n-h	t	H	D2	Weight [kg]
50A	50	220	155	120	8-19	20	285/285	160	19.6/19.6
65A	65	270	175	140	8-19	22	310/305	200	28.3/28.2
80A	80	300	200	160	8-23	24	340/335	224	40.4/40.5
100A	100	350	225	185	8-23	26	385/375	250	56.9/56.9
125A	125	430	270	225	8-25	26	455/440	315	89.5/89.5
150A	150	500	305	260	12-25	28	510/500	355	123/123
200A	200	570	350	305	12-25	30	630/-	450	188/-

WVFCFL/WVFCFNL

CAST IRON ANGLE VALVE FOR MARINE USE - 5K, 10K, 16K



Screw-down check valve

MATERIAL

No	Name of part	Material	
		Class B	Class S
1	Body	FC200	FC200
2	Bonnet	FC200	FC200
3	Hand Wheel	FC200	FC200
4	Disc	CAC406	SCS2
5	Valve Seat	CAC406	SCS2
6	Disc Nut	CAC406	SUS420J2
7	Screwed Bonnet Bush	CAC406	CAC406
8	Packing Bush	CAC406	SUS420J2
9	Packing Gland	CAC406	CAC406
10	Stem	C3771BD or BE	SUS403
11	Stud Bolt	SS400	SS400
12	Stud Bolt	C3771BD	C3771BD
13	Hexagon Nut	SS400	SS400
14	Hexagon Nut	C3604BD	C3604BD
15	Hexagon Nut	C3604BD	C3604BD
16	Lock Pin	SS400	SS400
17	Split Pin	C2600W	C2600W
18	Disc Lock Washer	C2600P	SUS304
19	Packing	Non-Asbestos	Non-Asbestos
20	Gasket	Non-Asbestos	Non-Asbestos
21	Name Plate (※)	C2801P	C2801P

(※) Option

HYDRAULIC INSPECTION

Rating	Nominal dia	Test pressure Mpa	
		Body	Seat
5K	300 or less	1.03	0.76
	350 & 400	0.88	0.65
10K	200 or less	2.06	1.51
	250 & more	1.47	1.08
16K	50 to 200	3.24	2.38

PRESSURE RATING

Applicable Standard No.	Reffer to JIS F7425									
	Maximum working pressure Mpa [kgf/cm ²]									
	Rating 5K				Rating 10K				Rating 16K	
	200A or less		250A & 300A	350A & 400A	200A or less		250A or more		50A to 200A	
Class B	Class S	Class B	Class B	Class B	Class S	Class B	Class S	Class B	Class S	
Steam of 230°C or less	-	0.49	-	-	-	0.98	-	-	-	1.57
Steam of 205°C or less	0.49	0.49	-	-	0.98	0.98	-	-	1.57	1.57
Saturated steam	0.49	0.49	-	-	0.98	0.98	0.49	0.49	1.57	1.57
Air and Gas	0.49	0.49	0.49	-	0.98	0.98	-	-	1.57	1.57
Oil and Pulsation water	0.49	0.49	0.49	0.49	0.98	0.98	0.98	0.98	1.57	1.57
Non-shock water of 120°C or less	0.69	0.69	0.69	0.59	1.37	1.37	0.98	0.98	2.16	2.16

DIMENSIONAL TABLE

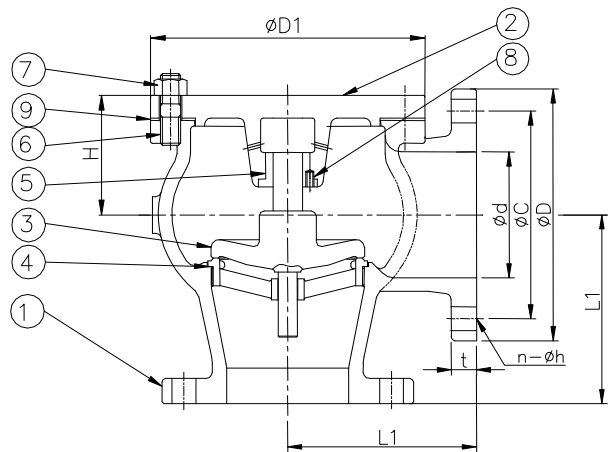
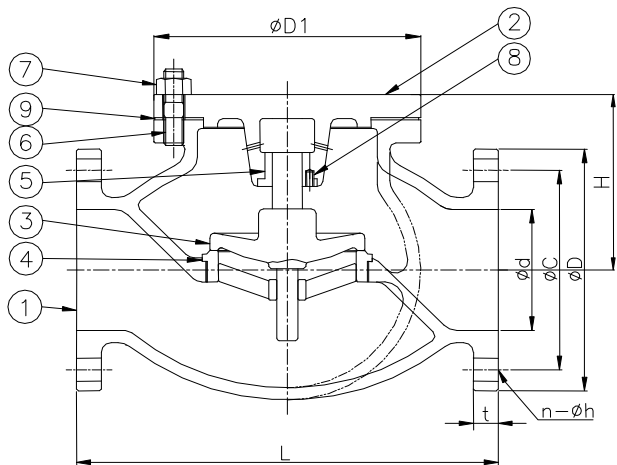
Model No	WVFCFL05 / WVFCFNL05								
Standard	Refer to JIS F7425 (F7306 / F7354)								
Flange	JIS 5K FF								
Item	ANGLE VALVE / SCREW-DOWN CHECK ANGLE VALVE								
Size	d	L	D	C	n-h	t	H	D2	Weight [kg]
50A	50	100	130	105	4-15	16	240/240	160	12.9/13.0
65A	65	115	155	130	4-15	18	255/245	180	18.2/18.2
80A	80	130	180	145	4-19	18	265/255	180	23.4/23.3
100A	100	150	200	165	8-19	20	310/300	224	33.7/33.5
125A	125	170	235	200	8-19	20	330/320	250	46.2/46.5
150A	150	190	265	230	8-19	22	380/365	280	63.4/64
200A	200	220	320	280	8-23	24	450/425	315	105/104
250A	250	275	385	345	12-23	26	540/510	335	176/175
300A	300	310	430	390	12-23	28	610/585	400	243/243
350A	335	360	480	435	12-25	30	690/660	500	335/336
400A	380	395	540	495	16-25	30	770/730	560	459/455
450A	430	440	605	555	16-25	30	-/835	630	-/618
500A	480	485	655	605	20-25	32	-/915	710	-/800
550A	530	530	720	665	20-27	32	-/985	800	-/1161

Model No	WVFCFL10 / WVFCFNL10								
Standard	Refer to JIS F7425 (F7308 / F7376)								
Flange	JIS 10K FF								
Item	ANGLE VALVE / SCREW-DOWN CHECK ANGLE VALVE								
Size	d	L	D	C	n-h	t	H	D2	Weight [kg]
50A	50	120	155	120	4-19	20	255/255	160	18.2/18.2
65A	65	130	175	140	4-19	22	270/260	200	25.4/25.3
80A	80	140	185	150	8-19	22	275/270	200	27.4/27.5
100A	100	160	210	175	8-19	24	315/305	250	40.6/40.6
125A	125	180	250	210	8-23	24	360/350	280	69.9/69.8
150A	150	205	280	240	8-23	26	405/390	315	81.0/81.2
200A	200	230	330	290	12-23	26	475/450	355	125/124
250A	250	290	400	355	12-25	30	570/-	450	211/-
300A	300	320	445	400	16-25	32	645/-	500	293/-
350A	335	360	490	445	16-25	34	710/-	560	386/-
400A	380	420	560	510	16-27	36	790/-	630	544/-

Model No	WVFCFL16 / WVFCFNL16								
Standard	Refer to JIS F7425 (F7310 / F7378)								
Flange	JIS 16K FF								
Item	ANGLE VALVE / SCREW-DOWN CHECK ANGLE VALVE								
Size	d	L	D	C	n-h	t	H	D2	Weight [kg]
50A	50	120	155	120	8-19	20	255/255	160	18.0/18.0
65A	65	130	175	140	8-19	22	270/260	200	25.0/24.9
80A	80	150	200	160	8-23	24	295/290	224	35.7/35.8
100A	100	170	225	185	8-23	26	330/320	250	49.2/49.2
125A	125	200	270	225	8-25	26	390/375	315	76.1/76.1
150A	150	225	305	260	12-25	28	435/425	355	103/103
200A	200	250	350	305	12-25	30	540/-	450	155/-

WVFCFLNG/WVFCFLNL

CAST IRON LIFT CHECK VALVE FOR MARINE USE - 5K



MATERIAL

No	Name of part	Material
1	Body	FC200
2	Bonnet	FC200
3	Disc	CAC406
4	Valve Seat	CAC406
5	Bush	CAC406
6	Stud Bolt	SS400
7	Hexagon Nut	SS400
8	Set Screw	SS400
9	Gasket	Non-Asbestos

HYDRAULIC INSPECTION

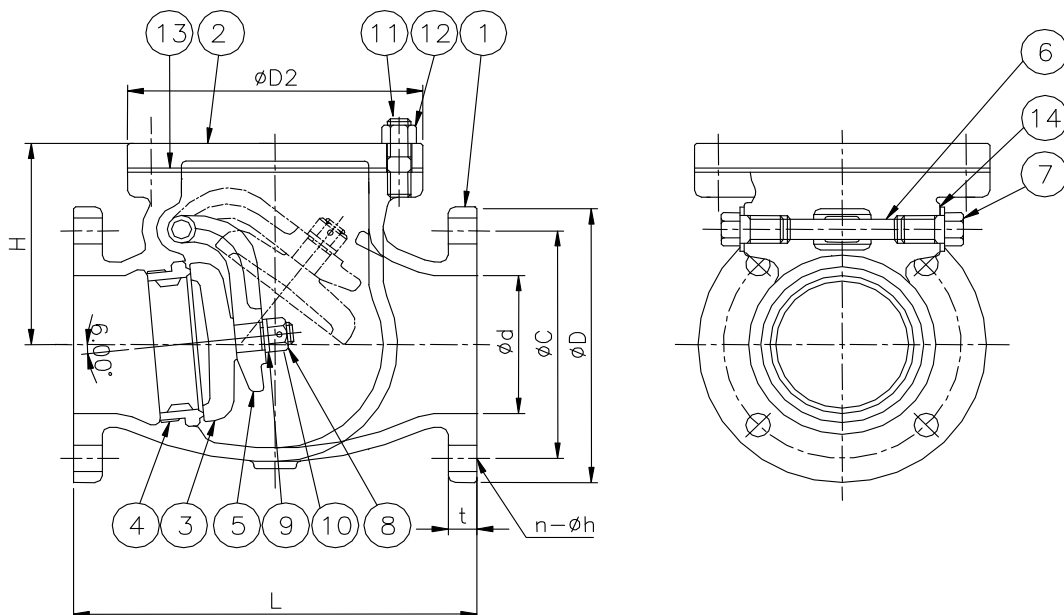
Test pressure Mpa	
Body	Seat
1.04	0.76~0.39

PRESSURE RATING

Applicable Standard No.	Refer to JIS F7425
Fluid condition	Maximum working pressure Mpa
Oil and Pulsation water	0.49
Non-shock water of 120°C or less	0.69

DIMENTIONAL TABLE

Model No	WVFCFLNG05 / WVFCFLNL05								
Standard	Reffer to JIS F7425 (F7358 / F7359)								
Flange	JIS 5K FF								
Item	LIFT CHECK GLOBE VALVE / LIFT CHECK ANGLE VALVE								
Size	d	L/L1	D	C	n-h	t	H	D1	Weight [kg]
50A	50	210/100	130	105	4-15	16	107/77	140	11.3/9.5
65A	65	250/115	155	130	4-15	18	124/81	160	16.8/13.8
80A	80	280/130	180	145	4-19	18	129/84	190	23.2/18.9
100A	100	340/150	200	165	8-19	20	146/96	215	32.5/25.6
125A	125	410/170	235	200	8-19	20	166/108	245	48.1/36.7
150A	150	480/190	265	230	8-19	22	188/125	270	67.9/50.9
200A	200	-/220	320	280	8-23	24	-/157	335	-/95



MATERIAL

No	Name of part	Material
1	Body	FC200
2	Bonnet	FC200
3	Disc	CAC406
4	Valve Seat	CAC406
5	Arm	CAC406
6	Pin	C3771BD
7	Plug	C3604BD
8	Hexagon Nut	C3604BD
9	Washer	C2801P-O
10	Split Pin	C2600W
11	Stud Bolt	SS400
12	Hexagon Nut	SS400
13	Gasket	Non-Asbestos
14	Gasket	Non-Asbestos

HYDRAULIC INSPECTION

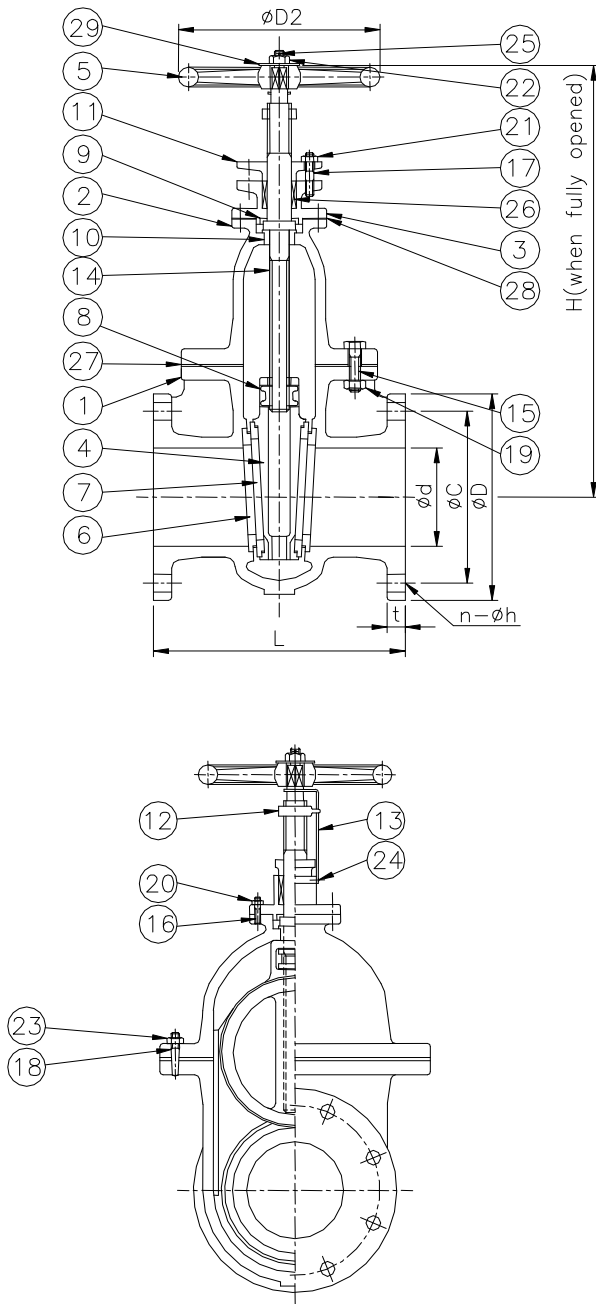
Test pressure Mpa	
Body	Seat
1.03	0.76~0.39
2.06	1.51~0.39

PRESSURE RATING

Applicable Standard No.	Reffer to JIS F7425	
Fluid condition	Maximum working pressure Mpa	
Oil and Pulsation water	0.49	0.98
Non-shock water of 120°C or less	0.69	1.37

DIMENTIONAL TABLE

Model No	WVFCFSN05 / WVFCFSN10								
Standard	Reffer to JIS F7425 (F7372 / F7373)								
Flange	JIS 5K FF/JIS 10K FF								
Item	SWING CHECK VALVE								
Size	d	L	D	C	n-h	t	H	D2	Weight [kg]
50A	50	190/210	130/155	105/120	4-15/4-19	16/20	97/109	135/150	9.06/13.6
65A	65	220/240	155/175	130/140	4-15/4-19	18/22	119/126	155/170	13.9/19.6
80A	80	250/270	180/185	145/150	4-19/8-19	18/22	129/136	185/185	19.1/22.6
100A	100	280/300	200/210	165/175	8-19	20/24	146/153	205/205	27.1/30.9
125A	125	330/350	235/250	200/210	8-19/8-23	20/24	171/180	235/250	39.0/49.2
150A	150	380/400	265/280	230/240	8-19/8-23	22/26	198/205	265/275	53.7/64.9
200A	200	460/480	320/330	280/290	8-23/12-23	24/26	235/242	300/330	94.4/103
250A(5K)	250	550	385	345	12-23	26	290	390	150



MATERIAL

No	Name of part	Material	
		CLASS B	CLASS S
1	Body	FC200	FC200
2	Bonnet	FC200	FC200
3	Stuffing Box	FC200	FC200
4	Disc	FC200	FC200
5	Handwheel	FC200	FC200
6	Valve Seat of Body	CAC406	SUS420J1 or J2
7	Valve Seat of Disc	CAC406	SUS420J1 or J2
8	Screwed Piece	CAC406	CAC406
9	Guide Bush	CAC406	CAC406
10	Guide Bush	CAC406	CAC406
11	Packing Gland	CAC406	CAC406
12	Indicator	CAC406	CAC406
13	Indicator Plate	C2801P	C2801P
14	Stem	C3771BD	SUS403
15	Stud Bolt	SS400	SS400
	Hexagon Bolt	SS400	SS400
16	Stud Bolt	SS400	SS400
17	Stud Bolt	C3771BD	C3771BD
18	Taper Pin with Thread	SUS403	SUS403
19	Hexagon Nut	SS400	SS400
20	Hexagon Nut	SS400	SS400
21	Hexagon Nut	C3604BD	C3604BD
22	Hexagon Nut	C3604BD	C3604BD
23	Hexagon Nut	C3604BD	C3604BD
24	Set Screw	C2700W	C2700W
25	Split pin	C2600W	C2600W
26	Packing	Non-Abestos	Non-Abestos
27	Gasket	Non-Abestos	Non-Abestos
28	Gasket	Non-Abestos	Non-Abestos
29	Name plate (※)	C2801P	C2801P

(※) Option

HYDRAULIC INSPECTION

Rating	Nominal dia	Test pressure Mpa	
		Body	Seat
5K	400 or less	1.03	0.76
	450 to 600	0.74	0.54
10K	400 or less	2.06	1.57
	450 to 600	1.77	1.29
16K	50 to 400	2.40	1.80

PRESSURE RATING

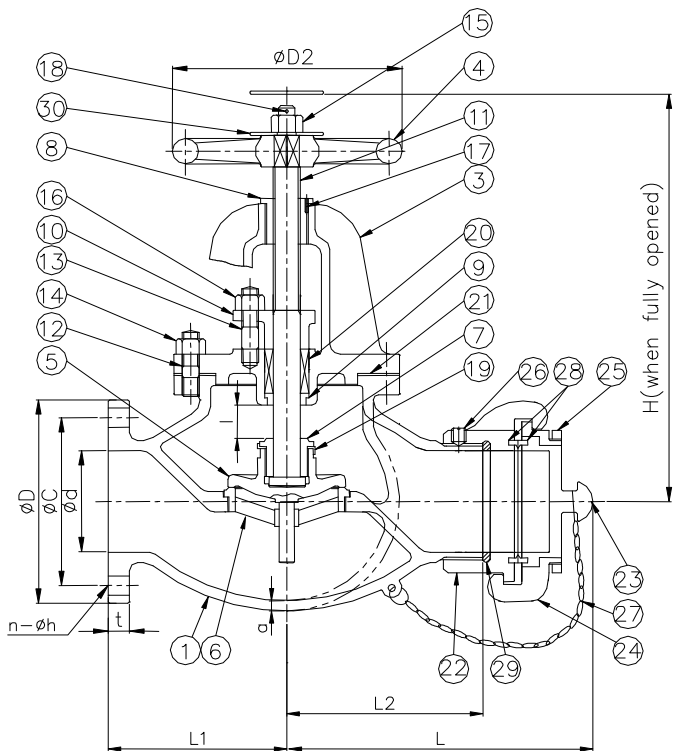
Applicable Standard No.	Reffer to JIS F7425						
	Maximum working pressure Mpa						
	200A or less	250A to 400A	450A to 600A	200A or less	250A to 400A	450A to 600A	50A to 400A
Saturated steam	0.29	0.29	0.29	0.49	0.29	0.29	-
Oil and Pulsation water	0.49	0.49	0.49	0.98	0.98	0.98	1.57
Non-shock water of 120°C or less	0.69	0.69	0.49	1.37	1.37	1.18	-

DIMENTIONAL TABLE

Model No	WVFCFS05								
Standard	Reffer to JIS F7425 (F7363)								
Flange	JIS 5K FF								
Item	GATE VALVE								
Size	d	L	D	C	n-h	t	H	D2	Weight [kg]
50A	50	180	130	105	4-15	16	285	125	13.5
65A	65	190	155	130	4-15	18	330	140	19.0
80A	80	200	180	145	4-19	18	380	160	24.2
100A	100	230	200	165	8-19	20	430	180	35.3
125A	125	250	235	200	8-19	20	495	200	48.1
150A	150	270	265	230	8-19	22	560	224	65.3
200A	200	290	320	280	8-23	24	680	280	103
250A	250	330	385	345	12-23	26	800	355	164
300A	300	370	430	390	12-23	28	920	400	236
350A	335	410	480	435	12-25	30	1000	450	307
400A	380	470	540	495	16-25	30	1100	500	405
450A	430	500	605	555	16-25	30	1420	560	556
500A	480	550	655	605	20-25	32	1500	560	700
550A	530	600	720	665	20-27	32	1650	630	878
600A	580	660	770	715	20-27	32	1680	710	1120

Model No	WVFCFS10								
Standard	Reffer to JIS F7425 (F7364)								
Flange	JIS 10K FF								
Item	GATE VALVE								
Size	d	L	D	C	n-h	t	H	D2	Weight [kg]
50A	50	200	155	120	4-19	20	300	140	19.4
65A	65	220	175	140	4-19	22	350	160	27.6
80A	80	230	185	150	8-19	22	400	180	33.0
100A	100	250	210	175	8-19	24	450	200	45.8
125A	125	270	250	210	8-23	24	520	224	65.9
150A	150	290	280	240	8-23	26	580	250	86.0
200A	200	320	330	290	12-23	26	700	315	136
250A	250	380	400	355	12-25	30	840	400	230
300A	300	440	445	400	16-25	32	960	450	331
350A	335	500	490	445	16-25	34	1050	500	433
400A	380	590	560	510	16-27	36	1150	560	597
450A	430	640	620	565	20-27	38	—	—	704
500A	480	710	675	620	20-27	40	—	—	901
550A	530	780	745	680	20-33	42	—	—	1192
600A	580	850	795	730	24-33	44	—	—	1490

Model No	WVFCFS16								
Standard	Reffer to JIS F7425 (F7369)								
Flange	JIS 16K FF								
Item	GATE VALVE								
Size	d	L	D	C	n-h	t	H	D2	Weight [kg]
50A	50	210	155	120	8-19	20	300	140	22.5
65A	65	240	175	140	8-19	22	350	160	25.0
80A	80	260	200	160	8-23	24	400	180	33.0
100A	100	290	225	185	8-23	26	450	200	52.0
125A	125	310	270	225	8-25	26	520	224	72.0
150A	150	330	305	260	12-25	28	580	250	95.0
200A	200	370	350	305	12-25	30	700	315	143
250A	250	430	430	380	12-27	34	840	400	203
300A	300	490	480	430	16-27	36	1006	450	430
350A	335	540	540	480	16-33	38	1073	500	580
400A	380	610	605	540	16-33	42	1185	560	780



HYDRAULIC INSPECTION

Rating	Test pressure Mpa		
	Body	Seat	Connection
5K	1.03	0.76	0.69
10K	2.06	1.51	1.37

PRESSURE RATING

Applicable Standard No.	JIS F7425	
Fluid condition	Maximum working pressure Mpa	
	Rating 5K	Rating 10K
Pulsation water	0.49	0.98
Non-shock water of 120°C or less	0.69	1.37

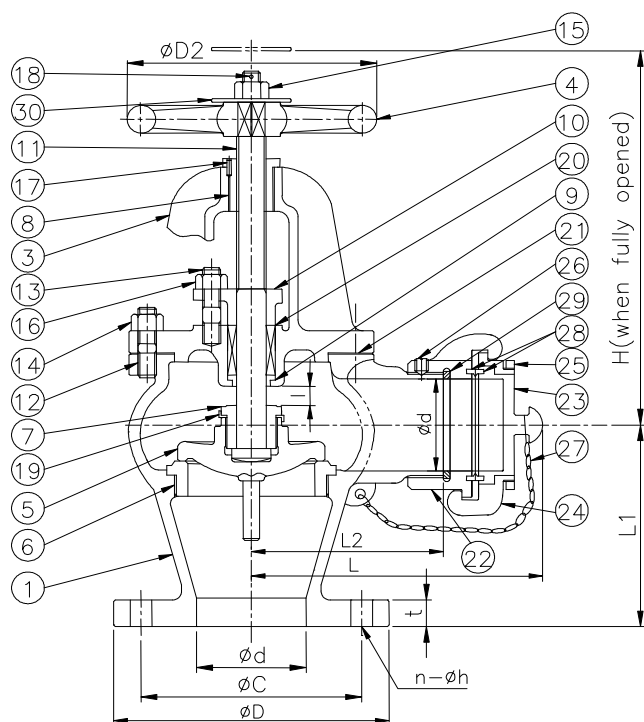
MATERIAL

No	Name of part	Material
1	Body	FC200
3	Bonnet	FC200
4	Handwheel	FC200
5	Disc	CAC406
6	Valve Seat	CAC406
7	Disc Nut	CAC406 or C3771BD
8	Screwed Bonnet Bush	CAC406
9	Packing Bush	CAC406
10	Packing Gland	CAC406
11	Stem	C3771BD or C3771BE
12	Stud Bolt	SS400
13	Stud Bolt	C3771BD or C3771BE
14	Hexagon Nut	SS400
15	Hexagon Nut	C3604BD
16	Hexagon Nut	C3604BD
17	Lock Pin	SS400
18	Split pin	C2600W
19	Disc Lock Washer	C2600P
20	Packing	Non-Asbestos
21	Gasket	Non-Asbestos
22	Hose Base Connection	CAC406
23	Cap	CAC406
24	Coupling Ring	CAC406
25	Set Ring	CAC406
26	Set Screw	C3771BD or C3771BE
27	Chain	C2600W
28	Gasket	Rubber
29	Gasket	Non-Asbestos
30	Name plate (※)	C2801P

(※) Option

DIMENTIONAL TABLE

Model No	WVFCFHG05 / WVFCFHG10										
Standard	Reffer to JIS F7425 (F7333)										
Flange	JIS 5K FF / JIS 10K FF										
Item	HOSE GLOBE VALVE										
Size	d	L	L1	L2	D	C	n-h	t	H	D2	Weight[kg]
5K 50A	50	165	105	110	130	105	4-15	16	270	160	14.7
10K 50A	50	170	110	115	155	120	4-19	20	285	160	18.9
10K 65A	65	200	135	140	175	140	4-19	22	310	200	28.2



HYDRAULIC INSPECTION

Rating	Test pressure Mpa		
	Body	Seat	Connection
5K	1.03	0.76	0.69
10K	2.06	1.51	1.37

PRESSURE RATING

Applicable Standard No.	JIS F7425	
Fluid condition	Maximum working pressure Mpa	
	Rating 5K	Rating 10K
Pulsation water	0.49	0.98
Non-shock water of 120°C or less	0.69	1.37

MATERIAL

No	Name of part	Material
1	Body	FC200
3	Bonnet	FC200
4	Handwheel	FC200
5	Disc	CAC406
6	Valve Seat	CAC406
7	Disc Nut	CAC406 or C3771BD
8	Screwed Bonnet Bush	CAC406
9	Packing Bush	CAC406
10	Packing Gland	CAC406
11	Stem	C3771BD or C3771BE
12	Stud Bolt	SS400
13	Stud Bolt	C3771BD or C3771BE
14	Hexagon Nut	SS400
15	Hexagon Nut	C3604BD
16	Hexagon Nut	C3604BD
17	Lock Pin	SS400
18	Split pin	C2600W
19	Disc Lock Washer	C2600P
20	Packing	Non-Asbestos
21	Gasket	Non-Asbestos
22	Hose Base Connection	CAC406
23	Cap	CAC406
24	Coupling Ring	CAC406
25	Set Ring	CAC406
26	Set Screw	C3771BD or C3771BE
27	Chain	C2600W
28	Gasket	Rubber
29	Gasket	Non-Asbestos
30	Name plate (※)	C2801P

(※) Option

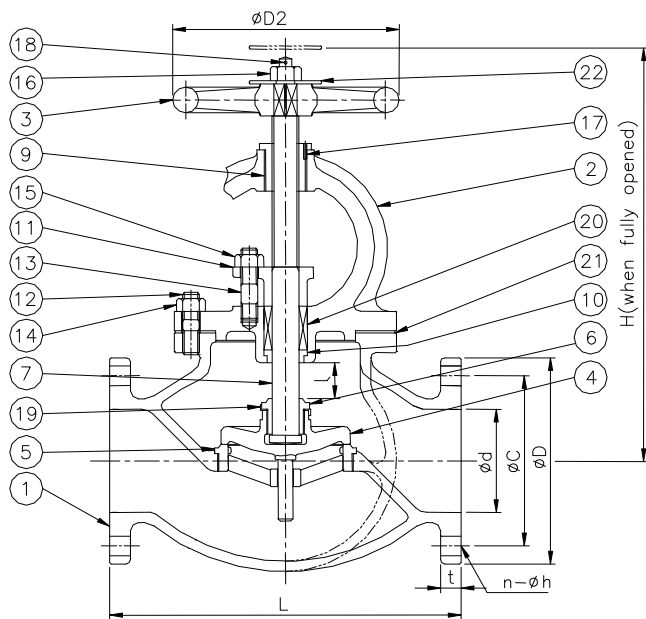
DIMENTIONAL TABLE

Model No	WVFCFHL05 / WVFCFHL10										
Standard	Reffer to JIS F7425 (F7333)										
Flange	JIS 5K FF / JIS 10K FF										
Item	HOSE ANGLE VALVE										
Size	d	L	L1	L2	D	C	n-h	t	H	D2	Weight[kg]
5K 50A	50	155	100	100	130	105	4-15	16	240	160	12.8
10K 50A	50	170	120	115	155	120	4-19	20	255	160	18.9
10K 65A	65	185	130	125	175	140	4-19	22	270	200	17.0

WVSCFG/WVSCFNG

CAST STEEL GLOBE VALVE FOR MARINE USE - 5K, 10K, 20K

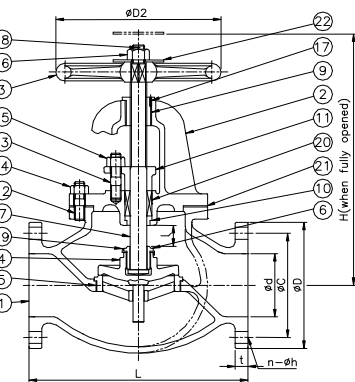
MATERIAL



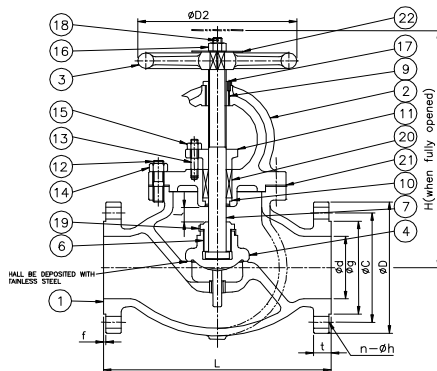
10K Type

No	Name of part	Material	
		5K/10k	20K
1	Body	SC480	SC480
2	Bonnet	SC480	SC480
3	Hand Wheel	FC200	FC200
4	Disc	SCS2	SCS2 or SUS420J2
5	Valve Seat	SCS2	-
6	Disc Nut	SUS420J1	SUS420J1
7	Stem	SUS403	SUS403
9	Screwed Bonnet Bush	C6782BD	C6782BD
10	Packing Bush	SUS420J1	SUS420J1
11	Packing Gland	CAC406	CAC406
12	Stud Bolt	SS490	SS490
13	Stud Bolt	SS490	S35C
14	Hexagon Nut	SS400	S25C
15	Hexagon Nut	C3771BD	SS400
16	Hexagon Nut	C3771BD	C3604BD
17	Lock Pin	SS400	SS400
18	Split Pin	C2600W	C2600W
19	Disc Lock Washer	SUS304	SUS304
20	Packing	Non-Asbestos	Non-Asbestos
21	Gasket	Non-Asbestos	Non-Asbestos
22	Name Plate (※)	C2801P	C2801P
23	Punding Receiver	S35C	S35C
24	Hexagon Bolt	SS400	SS400
25	Handwheel Cover	SS400	SS400

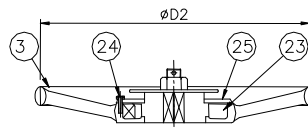
(※) Option



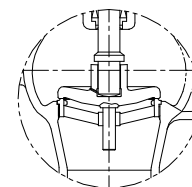
5K Type



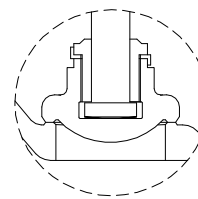
20K Type



20K Dia. 150A and more



Screw-down check valve



20K Nominal Dia. 32A to 100A

PRESSURE RATING

Applicable Standard No.	Reffer to JIS F7426		
Fluid Condition	Maximum working pressure Mpa		
	Rating 5K	Rating 10K	Rating 20K
Steam of 400°C	-	-	2.26
Steam of 350°C	-	-	2.55
Steam of 300°C	-	0.98	2.84
Steam of 220°C or less	-	1.18	3.04
Air and Gas	-	1.18	3.04
Oil and Pulsation water	0.49	1.18	3.04
Non-shock water of 120°C or less	0.69	1.37	3.33

HYDRAULIC INSPECTION

Rating	Test pressure Mpa	
	Body	Seat
5K	1.04	0.76
10K	2.06	1.51
20K	5.00	3.67

DIMENSIONAL TABLE

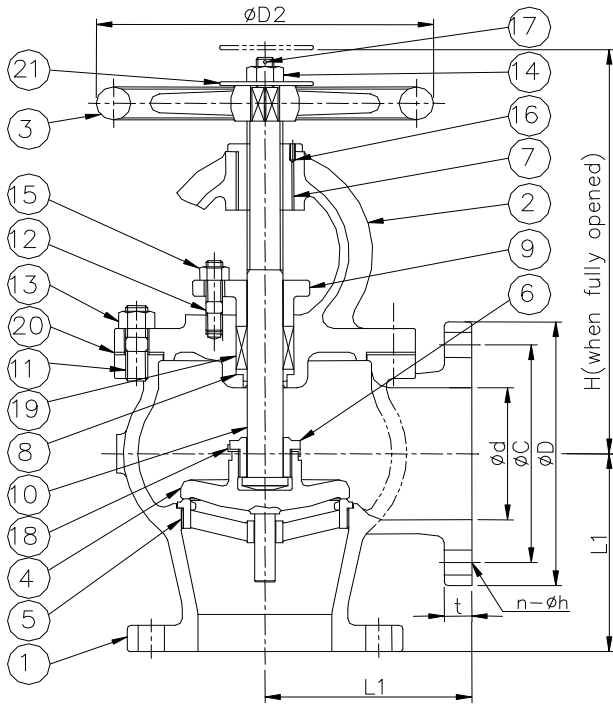
Model No	WVSCFG05 WVSCFNG05								
Standard	Refer to JIS F7426 (F7305※ / F7311)								
Flange	JIS 5K FF								
Item	GLOBE VALVE / SCREW-DOWN CHECK GLOBE VALVE								
Size	d	L	D	C	n-h	t	H	D2	Weight [kg]
50A	50	210	130	105	4-15	14	270	160	14.7
65A	65	250	155	130	4-15	14	300	180	21.3
80A	80	280	180	145	4-19	14	310	180	27.7
100A	100	340	200	165	8-19	16	360	224	40.8
125A	125	410	235	200	8-19	16	390	250	57.6
150A	150	480	265	230	8-19	18	445	280	80.3
200A	200	570	320	280	8-23	20	530	315	139
250A	250	740	385	345	12-23	22	795	355	230
300A	300	840	430	390	12-23	22	930	400	309
350A	335	940	480	435	12-25	24	-	500	600
400A	380	1050	540	495	16-25	24	-	580	701

※ Dimensional standard for 50A~200A

Model No	WVSCFG10 / WVSCFNG10								
Standard	Refer to JIS F7426 (F7313 / F7471)								
Flange	JIS 10K FF								
Item	GLOBE VALVE / SCREW-DOWN CHECK GLOBE VALVE								
Size	d	L	D	C	n-h	t	H	D2	Weight [kg]
50A	50	220	155	120	4-19	16	270/265	160	17.9/17.9
65A	65	270	175	140	4-19	18	300/295	200	26.0/26.1
80A	80	300	185	150	8-19	18	310/300	200	29.8/29.8
100A	100	350	210	175	8-19	18	355/345	250	44.7/44.8
125A	125	420	250	210	8-23	20	415/405	280	70.3/69.8
150A	150	490	280	240	8-23	22	470/455	315	96.4/96.3
200A	200	570	330	290	12-23	22	565/545	355	159/158
250A	250	740	400	355	12-25	24	645/-	400	257/257
300A	300	840	445	400	16-25	24	735/-	450	370/370

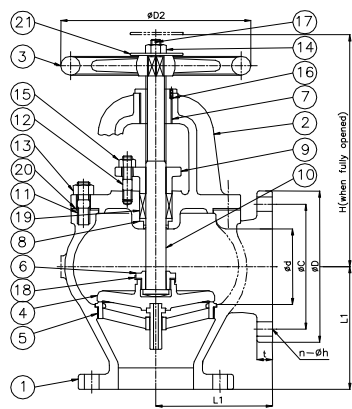
Model No	WVSCFG20 / WVSCFNG20										
Standard	Refer to JIS F7426 (F7313 / F7473)										
Flange	JIS 20K RF										
Item	GLOBE VALVE / SCREW-DOWN CHECK GLOBE VALVE										
Size	d	L	D	C	g	n-h	t	f	H	D2	Weight [kg]
32A	32	190	135	100	76	4-19	18	2	270/265	160	14.4/14.4
40A	40	200	140	105	81	4-19	18	2	290/280	160	16.0/16.0
50A	50	230	155	120	96	8-19	18	2	305/295	200	21.6/21.6
65A	65	270	175	140	116	8-19	20	2	345/330	224	30.4/30.1
80A	80	300	200	160	132	8-23	22	2	385/370	250	43.5/43.5
100A	100	350	225	185	160	8-23	24	2	440/420	280	62.3/62.1
125A	125	430	270	225	195	8-25	26	2	500/475	315	95.7/97
150A	150	500	305	260	230	12-25	28	2	550/525	355	133.3/136
200A	200	560	350	305	275	12-25	30	2	630/605	450	296.1/212
250A	250	660	430	380	345	12-27	34	2	725/700	560	339.1/349

MATERIAL

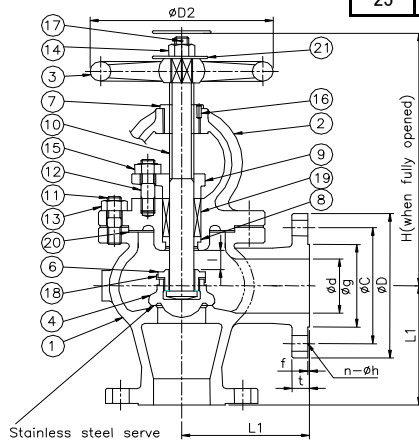


10K Type

No	Name of part	Material	
		5K/10k	20K
1	Body	SC480	SC480
2	Bonnet	SC480	SC480
3	Hand Wheel	FC200	FC200
4	Disc	SCS2	SCS2 or SUS420J2
5	Valve Seat	SCS2	-
6	Disc Nut	SUS420J1	SUS420J1
7	Screwed Bonnet Bush	C6782BD	C6782BD
8	Packing Bush	SUS420J1	SUS420J1
9	Packing Gland	CAC406	CAC406
10	Stem	SUS403	SUS403
11	Stud Bolt	SS490	S35C
12	Stud Bolt	SS400	SS490
13	Hexagon Nut	SS400	S25C
14	Hexagon Nut	C3771BD	C3604BD
15	Hexagon Nut	C3771BD	SS400
16	Lock Pin	SS400	SS400
17	Split Pin	C2600W	C2600W
18	Disc Lock Washer	SUS304	SUS304
19	Packing	Non-Asbestos	Non-Asbestos
20	Gasket	Non-Asbestos	Non-Asbestos
21	Name Plate (※)	C2801P	C2801P
23	Punding Receiver	S35C	S35C
24	Hexagon Nut	SS400	SS400
25	Handwheel Cover	SS400	SS400

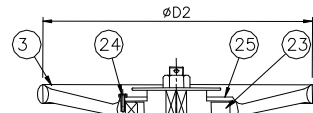


5K Type

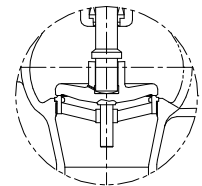


20K Type

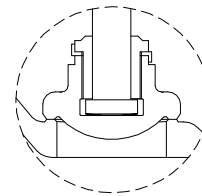
(※) Option



20K Dia. 150A and more



Screw-down check valve



20K Nominal Dia. 32A to 100A

PRESSURE RATING

Applicable Standard No.	Refer to JIS F7426		
Fluid Condition	Maximum working pressure Mpa		
	Rating 5K	Rating 10K	Rating 20K
Steam of 400°C	-	-	2.26
Steam of 350°C	-	-	2.55
Steam of 300°C	-	0.98	2.84
Steam of 220°C or less	-	1.18	3.04
Air and Gas	-	1.18	3.04
Oil and Pulsation water	0.49	1.18	3.04
Non-shock water of 120°C or less	0.69	1.37	3.33

HYDRAULIC INSPECTION

Rating	Test pressure Mpa	
	Body	Seat
5K	1.04	0.76
10K	2.06	1.51
20K	5.00	3.67

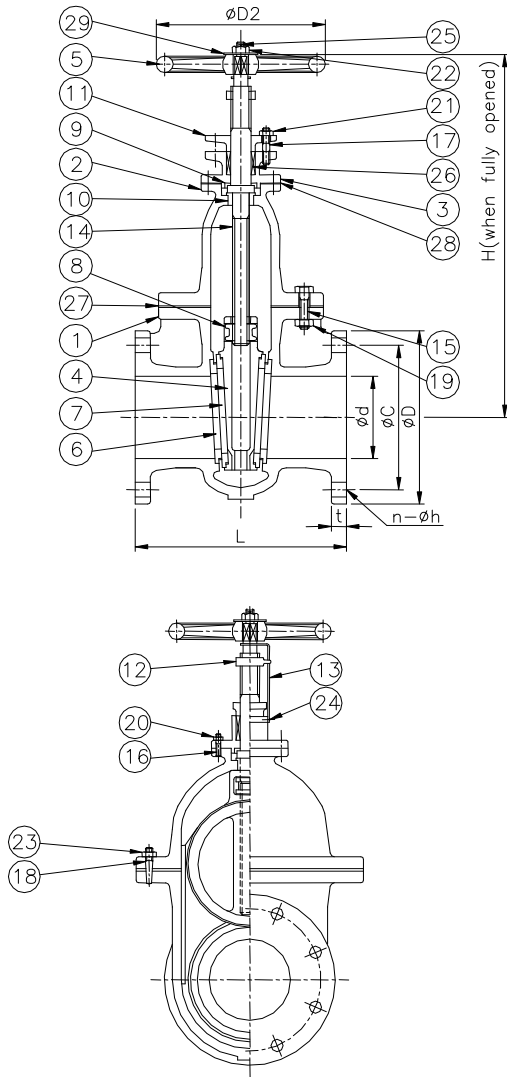
DIMENTIONAL TABLE

Model No	WVSCFL05 / WVSCFNL05								
Standard	Reffer to JIS F7426 (F7306※ / F7312)								
Flange	JIS 5K FF								
Item	ANGLE VALVE / SCREW-DOWN CHECK ANGLE VALVE								
Size	d	L1	D	C	n-h	t	H	D2	Weight [kg]
50A	50	100	130	105	4-15	14	240	160	12.9
65A	65	115	155	130	4-15	14	250	180	18.2
80A	80	130	180	145	4-19	14	265	180	23.4
100A	100	150	200	165	8-19	16	310	224	33.7
125A	125	170	235	200	8-19	16	330	250	46.2
150A	150	190	265	230	8-19	18	380	280	63.4
200A	200	220	320	280	8-23	20	450	315	105
250A	250	275	385	345	12-23	22	645	355	178
300A	300	310	430	390	12-23	22	750	400	275
350A	335	360	480	435	12-25	30	690	500	327
400A	380	395	540	495	16-25	30	770	630	459

※ Dimensional standard for 50A~200A

Model No	WVSCFL10 / WVSCFNL10								
Standard	Reffer to JIS F7426 (F7320 / F7472)								
Flange	JIS 10K FF								
Item	ANGLE VALVE / SCREW-DOWN CHECK ANGLE VALVE								
Size	d	L1	D	C	n-h	t	H	D2	Weight [kg]
50A	50	120	155	120	4-19	16	240/235	160	16.3/16.3
65A	65	130	175	140	4-19	18	260/250	200	23.0/23.1
80A	80	140	185	150	8-19	18	265/225	200	25.3/25.3
100A	100	160	210	175	8-19	18	300/290	250	37.0/37.0
125A	125	180	250	210	8-23	20	350/340	280	57.1/56.6
150A	150	205	280	240	8-23	22	400/385	315	77.2/77.1
200A	200	230	330	290	12-23	22	480/460	355	116/116
250A	250	290	400	355	12-25	24	535	450	188/188
300A	300	320	445	400	16-25	24	610	450	256/256

Model No	WVSCFL20 / WVSCFNL20										
Standard	Reffer to JIS F7314 / F7474)										
Flange	JIS 20K RF										
Item	ANGLE VALVE / SCREW-DOWN CHECK ANGLE VALVE										
Size	d	L1	D	C	g	n-h	t	f	H	D2	Weight [kg]
32A	32	100	135	100	76	4-19	18	2	250/240	160	13.0/13.0
40A	40	110	140	105	81	4-19	18	2	265/255	160	15.2/15.1
50A	50	125	155	120	96	8-19	18	2	275/270	200	20.0/19.9
65A	65	135	175	140	116	8-19	20	2	305/295	224	26.9/26.7
80A	80	150	200	160	132	8-23	22	2	340/325	250	38.9/38.8
100A	100	170	225	185	160	8-23	24	2	385/365	280	54.4/54.2
125A	125	200	270	225	195	8-25	26	2	440/415	315	80.7/83.0
150A	150	225	305	260	230	12-25	28	2	485/460	355	112.3/115
200A	200	280	350	305	275	12-25	30	2	540/520	450	183/189
250A	250	310	430	380	345	12-27	34	2	620/595	560	285.9/296



MATERIAL

No	Name of part	Material	
		CLASS B	CLASS S
1	Body	SC450	SC450
2	Bonnet	SC450	SC450
3	Stuffing Box	SC450	SC450
4	Disc	SC450	SC450
5	Handwheel	FC200	FC200
6	Valve Seat of Body	CAC406	SUS420J1 or J2
7	Valve Seat of Disc	CAC406	SUS420J1 or J2
8	Screwed Piece	CAC406	CAC406
9	Guide Bush	CAC406	CAC406
10	Guide Bush	CAC406	CAC406
11	Packing Gland	CAC406	CAC406
12	Indicator	CAC406	CAC406
13	Indicator Plate	C2801P	C2801P
14	Stem	C3771BD	SUS403
15	Stud Bolt	SS400	SS400
	Hexagon Bolt	SS400	SS400
16	Stud Bolt	SS400	SS400
17	Stud Bolt	C3771BD	C3771BD
18	Taper Pin with Thread	SUS403	SUS403
19	Hexagon Nut	SS400	SS400
20	Hexagon Nut	SS400	SS400
21	Hexagon Nut	C3604BD	C3604BD
22	Hexagon Nut	C3604BD	C3604BD
23	Hexagon Nut	C3604BD	C3604BD
24	Set Screw	C2700W	C2700W
25	Split pin	C2600W	C2600W
26	Packing	Non-Aabestos	Non-Aabestos
27	Gasket	Non-Aabestos	Non-Aabestos
28	Gasket	Non-Aabestos	Non-Aabestos
29	Name plate (※)	C2801P	C2801P

(※) Option

HYDRAULIC INSPECTION

Test pressure Mpa	
Body	Seat
2.06	1.51

PRESSURE RATING

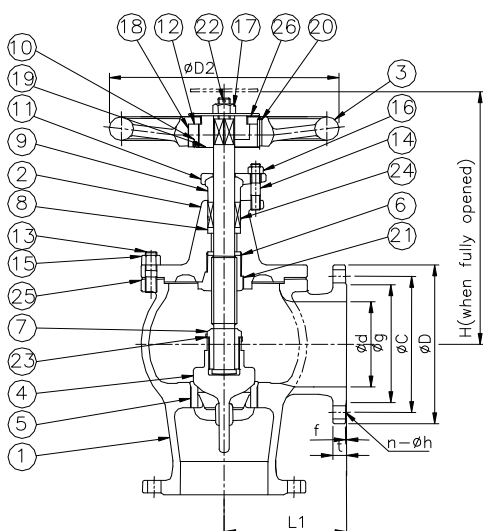
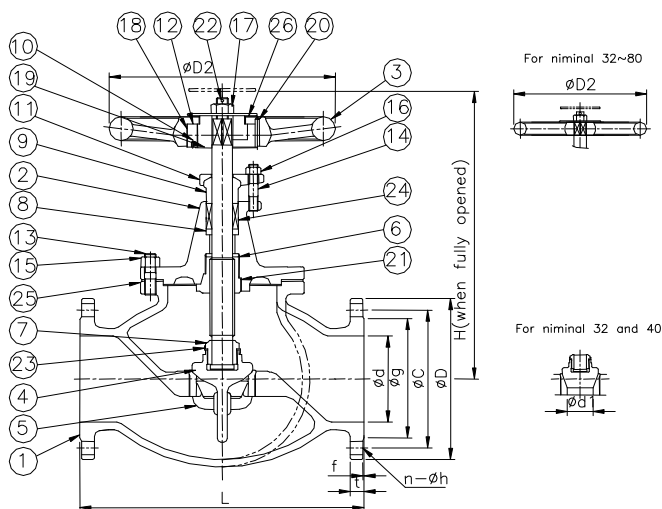
Applicable Standard No.	Refer to JIS F7426	
Fluid Condition	Maximum working pressure Mpa	
	200A or less	250A and over
Saturated steam	0.69	0.49
Oil and Pulsation water	0.98	0.98
Non-shock water of 120°C or less	1.37	1.37

DIMENTIONAL TABLE

Model No	WVSCFS10								
Standard	Refer to JIS F7426 (F7366)								
Flange	JIS 10K FF								
Item	GATE VALVE								
Size	d	L	D	C	n-h	t	H	D2	Weight [kg]
50A	50	200	155	120	4-19	16	300	140	17.1
65A	65	220	175	140	4-19	18	350	160	26.5
80A	80	230	185	150	8-19	18	400	180	31.5
100A	100	250	210	175	8-19	18	450	200	44.9
125A	125	270	250	210	8-23	20	520	224	63.2
150A	150	290	280	240	8-23	22	580	250	82.3
200A	200	310	330	290	12-23	22	700	315	130
250A	250	340	400	355	12-25	24	840	400	203
300A	300	380	445	400	16-25	24	960	450	291
350A	335	420	490	445	16-26	26	1050	500	368
400A	380	480	560	510	16-27	28	1150	560	507

WVSCFGA/WVSCGLA

CAST STEEL AIR VALVE FOR MARINE USE - 30K



MATERIAL

No	Name of part	Material
1	Body	SC450
2	Bonnet	SC450
3	Handwheel	FC200
4	Disc	C3782BD or BE, HBsC2
5	Valve Seat	C3782BD or HBsC2
6	Screwed Bonnet Bush	C3782BD or BE, HBsC2
7	Disc Nut	CAC406
8	Packing Bush	CAC406
9	Packing Gland Ring	CAC406
10	Stem	SUS403
11	Packing Gland	S25C
12	Punding Receiver	SS400
13	Stud Bolt	S35C
14	Stud Bolt	SS490
15	Hexagon Nut	S25C
16	Hexagon Nut	SS400
17	Hexagon Nut	C3771BD
18	Punding Piece	SS400
19	Punding Piece Cover	SS400
20	Straight Pin	S35C
21	Straight Pin	D3771BD
22	Split pin	C2600W
23	Disc Lock Washer	C2600P
24	Packing	Non-Aabestos
25	Gasket	Non-Aabestos
26	Name plate (※)	C2801P

(※) Option

HYDRAULIC INSPECTION

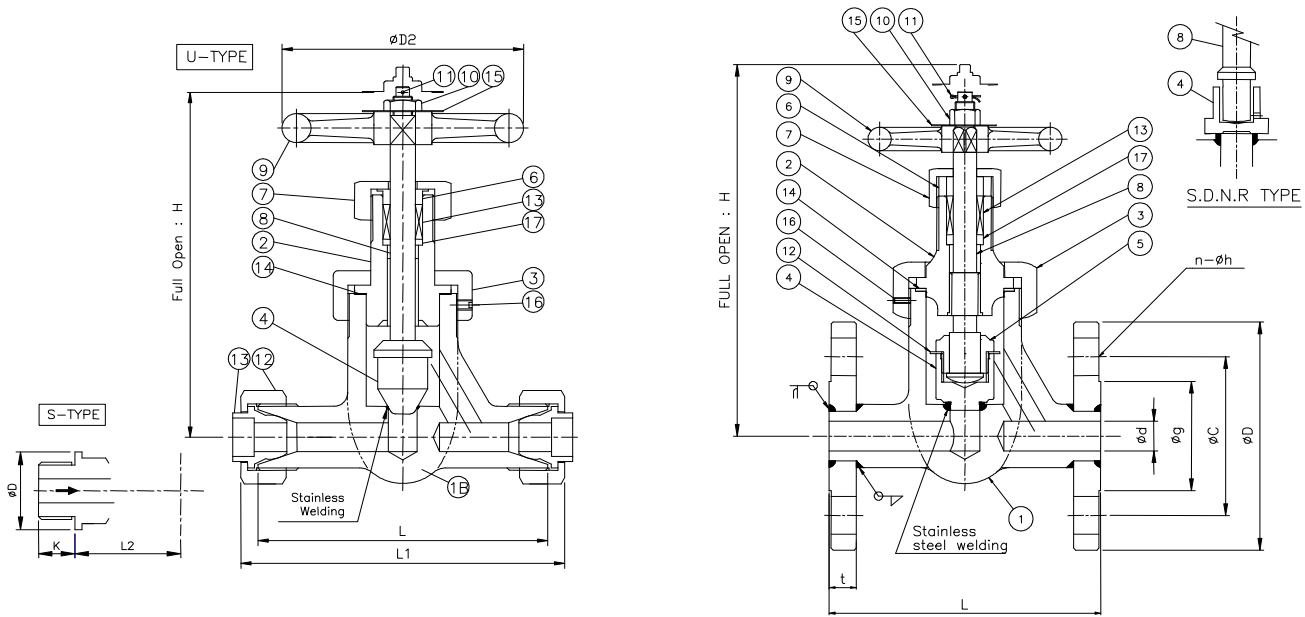
Test pressure Mpa	
Body	Seat
6.76	4.96

PRESSURE RATING

Applicable Standard No.	Reffer to JIS F7426
Fluid Condition	Maximum working pressure Mpa
Air	4.51

DIMENTIONAL TABLE

Model No	WVSCFGA30 / WVSCFLA30											
Standard	Reffer to JIS F7426 (F7340 / F7475))											
Flange	JIS 30K RF											
Item	AIR GLOBE VALVE / AIR ANGLE VALVE											
Size	d	L	L1	D	C	g	n-h	t	f	H	D2	Weight [kg]
32A	32	220	114	140	105	80	4-19	22	2	270/245	180	16.7/16.6
40A	40	240	121	160	120	90	4-23	22	2	280/255	180	21.1/20.3
50A	50	260	146	165	130	105	8-19	22	2	350/310	224	28.8/27.6
65A	65	310	165	200	160	130	8-23	26	2	390/340	250	48.7/46.6
80A	80	340	178	210	170	140	8-23	28	2	430/380	280	60.9/55.6
100A	100	390	205	240	195	160	8-25	32	2	480/435	315	86.0/80.9
125A	125	470	230	275	230	195	8-25	36	2	570/510	400	139/126
150A	150	540	250	325	275	235	12-27	38	2	655/585	450	199/177
200A	200	-	300	370	320	280	12-27	42	2	-/685	500	-/258



MATERIAL

No	Name of part	Material
1	Body	SF440 or S25C
2	Flange	SF440 or S25C
3	Bonnet	SF440 or S25C
4	Disc	SUS420J1 or J2
5	Disc Nut	SUS420J2
6	Stem	SUS403
7	Handwheel	FC200
8	Packing Bush	C3771BD
9	Gland Nut	C3771BD
10	Packing Gland	C3771BD
11	Hexagon Nut	C3771BD
12	Split Pin	C2600W
13	Set Screw	S45C
14	Bonnet Nut	SF440
15	Disc Lock Washer	SUS304
16	Union nut	S25C
17	Nipple for Copper Pipe	CAC201 or C1100 BD
18	Nipple for Steel Pipe	S25C
19	Packing	NON-ASBESTOS
20	Gasket	NON-ASBESTOS
21	Name Plate (※)	C2801P

(※) Option

CLASSIFICATION

Type	Type of connection
S	Union nut and thread
U	Both side union nut
F	Flange

HYDRAULIC INSPECTION

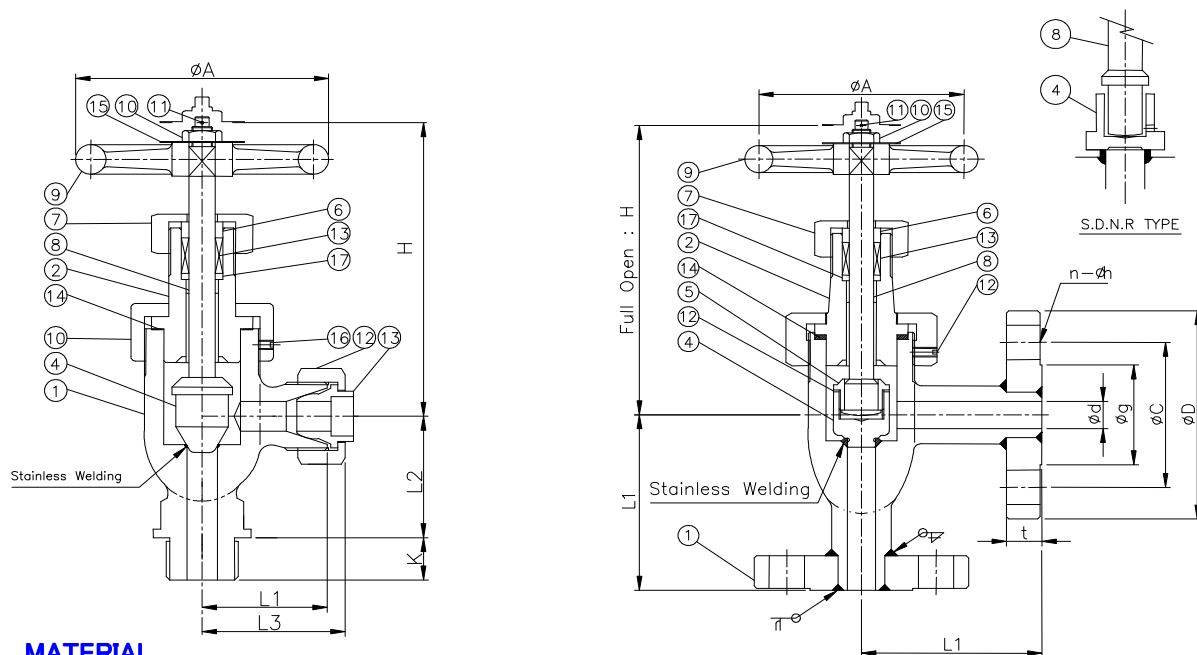
Test pressure Mpa	
Body	Seat
5.0	3.67

PRESSURE RATING

Applicable Standard No.	Reffer to JIS F7421
Fluid Condition	Maximum working pressure Mpa
Steam of 400°C	2.16
Steam of 350°C	2.55
Steam of 300°C	2.84
Steam of 220°C or less	3.04
Air, Gas, Oil and Pulsation water	3.04
Non-shock water of 120°C or less	3.33

DIMENTIONAL TABLE

Model No	WVSFFGU20													
Standard	Reffer to JIS F7421													
Rating	JIS 20K RF													
Item	GLOBE VALVE													
Size	Type	d	L	L1	L2	k	H	D2	D	C	g	t	n-h	Weight [kg]
6A	S	6	-	45	40	12	130	80	-	-	-	-	-	1.23
10A	S	10	-	51	45	16	140	80	-	-	-	-	-	1.29
6A	U	6	97	119	-	-	130	80	-	-	-	-	-	1.26
10A	U	10	113	136	-	-	150	80	-	-	-	-	-	1.72
15A	F	15	140	-	-	-	188	100	95	70	55	18	4-15	3.90
20A	F	20	160	-	-	-	193	125	100	75	60	18	4-15	5.29
25A	F	25	180	-	-	-	230	140	125	90	52	20	4-19	7.49



MATERIAL

No	Name of part	Material
1	Body	SF440 or S25C
2	Flange	SF440 or S25C
3	Bonnet	SF440 or S25C
4	Disc	SUS420J1 or J2
5	Disc Nut	SUS420J2
6	Stem	SUS403
7	Handwheel	FC200
8	Packing Bush	C3771BD
9	Gland Nut	C3771BD
10	Packing Gland	C3771BD
11	Hexagon Nut	C3771BD
12	Split Pin	C2600W
13	Set Screw	S45C
14	Bonnet Nut	SF440
15	Disc Lock Washer	SUS304
16	Union nut	S25C
17	Nipple for Copper Pipe	CAC201 or C1100 BD
18	Nipple for Steel Pipe	S25C
19	Packing	NON-ASBESTOS
20	Gasket	NON-ASBESTOS
21	Name Plate (※)	C2801P

(※) Option

CLASSIFICATION

Type	Type of connection
S	Union nut and thread
F	Flange

HYDRAULIC INSPECTION

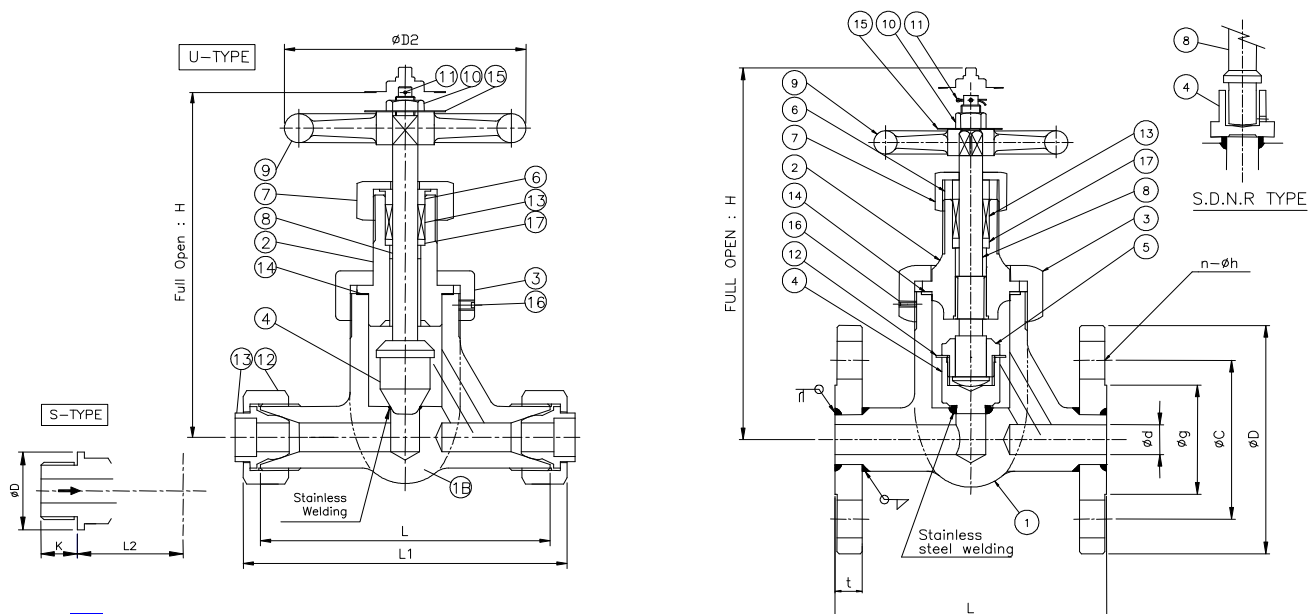
Test pressure Mpa	
Body	Seat
5.0	3.67

PRESSURE RATING

Applicable Standard No.	Reffer to JIS F7422
Fluid Condition	Maximum working pressure Mpa
Steam of 400°C	2.16
Steam of 350°C	2.55
Steam of 300°C	2.84
Steam of 220°C or less	3.04
Air, Gas, Oil and Pulsation water	3.04
Non-shock water of 120°C or less	3.33

DIMENTIONAL TABLE

Model No	WVSFFLU20													
Standard	Reffer to JIS F7422													
Rating	JIS 20K RF													
Item	ANGLE VALVE													
Size	Type	d	L1	L2	L3	k	H	D2	D	C	g	t	n-h	Weight [kg]
6A	S	6	45	38	51	12	115	80	-	-	-	-	-	1.20
10A	S	10	45	45	58	16	130	80	-	-	-	-	-	1.54
15A	F	15	75	-	-	-	205	100	95	70	55	18	4-15	3.80
20A	F	20	80	-	-	-	230	125	100	75	60	18	4-15	5.05
25A	F	25	95	-	-	-	255	140	125	90	52	20	4-19	7.16



MATERIAL

No	Name of part	Material
1	Body	SF440 or S25C
2	Flange	SF440 or S25C
3	Bonnet	SF440 or S25C
4	Disc	SUS420J1 or J2
5	Disc Nut	SUS420J2
6	Stem	SUS403
7	Handwheel	FC200
8	Packing Bush	C3771BD
9	Gland Nut	C3771BD
10	Packing Gland	C3771BD
11	Hexagon Nut	C3771BD
12	Split Pin	C2600W
13	Set Screw	S45C
14	Bonnet Nut	SF440
15	Disc Lock Washer	SUS304
16	Union nut	S25C
17	Nipple for Copper Pipe	CAC201 or C1100 BD
18	Nipple for Steel Pipe	S25C
19	Packing	NON-ASBESTOS
20	Gasket	NON-ASBESTOS
21	Name Plate	C2801P

CLASSIFICATION

Type	Type of connection
S	Union nut and thread
U	Both side union nut
F	Flange

HYDRAULIC INSPECTION

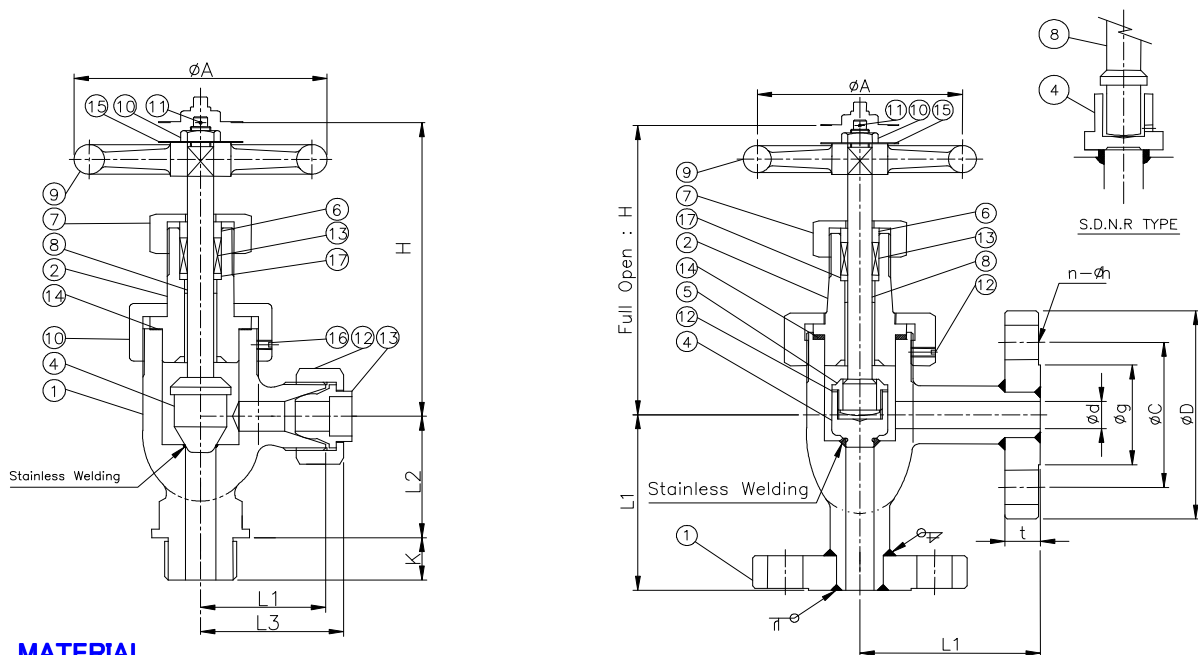
Test pressure Mpa	
Body	Seat
9.12	6.69

PRESSURE RATING

Applicable Standard No.	Reffer to JIS F7329
Fluid Condition	Maximum working pressure Mpa
Steam of 425°C	3.92
Steam of 400°C	4.51
Steam of 350°C	5.10
Steam of 300°C or less	5.59
Air, Gas, Oil and Pulsation water	6.08

DIMENTIONAL TABLE

Model No	WVSFFGU40													
Standard	Reffer to JIS F7329													
Rating	JIS 40K RF													
Item	GLOBE VALVE													
Size	Type	d	L	L1	L2	k	H	D2	D	C	g	t	n-h	Weight [kg]
6A	S	6	-	45	40	12	130	80	-	-	-	-	-	1.23
10A	S	10	-	51	45	16	150	100	-	-	-	-	-	1.29
6A	U	6	97	119	-	-	130	80	-	-	-	-	-	1.26
10A	U	10	113	136	-	-	150	80	-	-	-	-	-	1.72
15A	F	15	150	-	-	-	198	125	115	80	55	20	4-19	3.90
20A	F	20	170	-	-	-	203	125	120	85	60	20	4-19	5.29
25A	F	25	200	-	-	-	235	140	130	95	70	22	4-19	7.49



MATERIAL

No	Name of part	Material
1	Body	SF440 or S25C
2	Flange	SF440 or S25C
3	Bonnet	SF440 or S25C
4	Disc	SUS420J1 or J2
5	Disc Nut	SUS420J2
6	Stem	SUS403
7	Handwheel	FC200
8	Packing Bush	C3771BD
9	Gland Nut	C3771BD
10	Packing Gland	C3771BD
11	Hexagon Nut	C3771BD
12	Split Pin	C2600W
13	Set Screw	S45C
14	Bonnet Nut	SF440
15	Disc Lock Washer	SUS304
16	Union nut	S25C
17	Nipple for Copper Pipe	CAC201 or C1100 BD
18	Nipple for Steel Pipe	S25C
19	Packing	NON-ASBESTOS
20	Gasket	NON-ASBESTOS
21	Name Plate (※)	C2801P

(※) Option

CLASSIFICATION

Type	Type of connection
S	Union nut and thread
F	Flange

HYDRAULIC INSPECTION

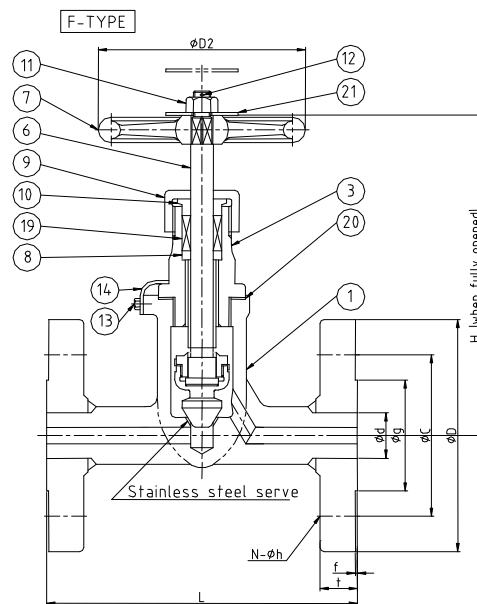
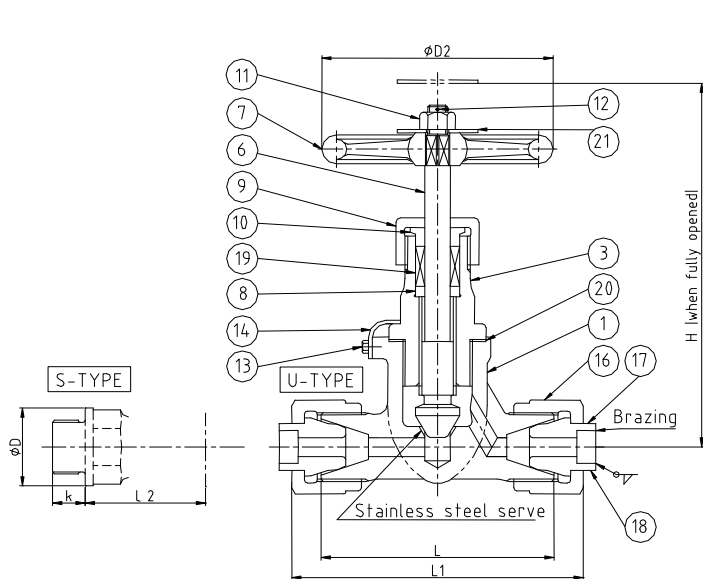
Test pressure Mpa	
Body	Seat
9.12	6.69

PRESSURE RATING

Applicable Standard No.	Reffer to JIS F7330
Fluid Condition	Maximum working pressure Mpa
Steam of 425°C	3.92
Steam of 400°C	4.51
Steam of 350°C	5.10
Steam of 300°C or less	5.59
Air, Gas, Oil and Pulsation water	6.08

DIMENTIONAL TABLE

Model No	WVSFFLU40													
Standard	Reffer to JIS F7330													
Rating	JIS 40K RF													
Item	ANGLE VALVE													
Size	Type	d	L1	L2	L3	k	H	D2	D	C	g	t	n-h	Weight [kg]
6A	S	6	45	38	51	12	115	80	-	-	-	-	-	1.20
10A	S	10	45	45	58	16	130	80	-	-	-	-	-	1.54
15A	F	15	75	-	-	-	205	100	115	80	55	20	4-19	3.80
20A	F	20	80	-	-	-	230	125	120	85	60	20	4-19	5.05
25A	F	25	95	-	-	-	255	140	130	95	70	22	4-19	7.16



MATERIAL

No	Name of part	Material
1	Body	SF440 or S25C
2	Flange	SF440 or S25C
3	Bonnet	SF440 or S25C
4	Disc	C6782 BD or C6782 BE
5	Disc Nut	C6782BD
6	Stem	C6782BD or C6782 BE
7	Handwheel	FC200
8	Packing Bush	C3771BD
9	Gland Nut	C3771BD
10	Packing Gland	C3771BD
11	Hexagon Nut	C3771BD
12	Split Pin	C2600W
13	Set Screw	C2700W
14	Lock Plate	SUS304
15	Disc Lock Washer	C2600 P
16	Union nut	S25C
17	Nipple for Copper Pipe	CAC201 or C1100 BD
18	Nipple for Steel Pipe	S15C
19	Packing	NON-ASBESTOS
20	Gasket	NON-ASBESTOS
21	Name Plate (※)	C2801P

(※) Option

CLASSIFICATION

Type	Type of connection
S	Union nut and thread
U	Both side union nut
F	Flange

HYDRAULIC INSPECTION

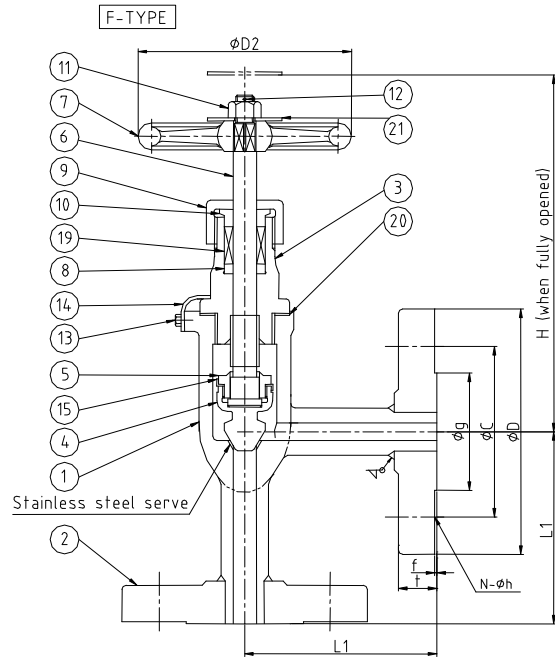
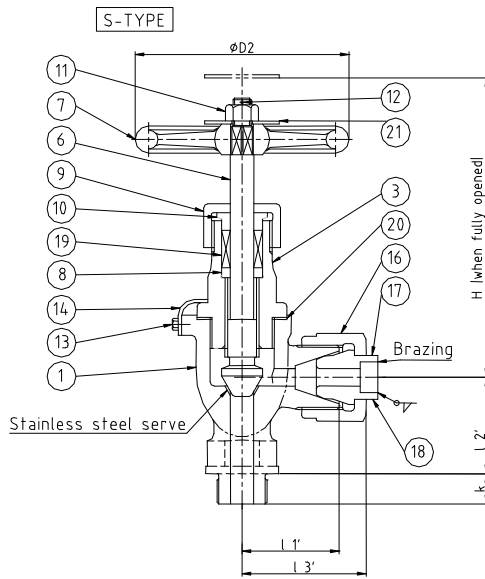
Test pressure Mpa	
Body	Seat
6.76	4.96

PRESSURE RATING

Applicable Standard No.	Reffer to JIS F7336
Fluid Condition	Maximum working pressure Mpa
Air	4.51

DIMENTIONAL TABLE

Model No	WVSFFGA30															
Standard	Reffer to JIS F7336															
Rating	JIS 30K															
Item	AIR GLOBE VALVE															
Size	Type	d	L1	L2	L3	k	H	D2	B2	D	C	g	t	f	n-h	Weight [kg]
6A	S	6	42	38	51	12	130	80	30	28	-	-	-	-	-	1.26
10A	S	10	51	45	63	16	150	100	41	34	-	-	-	-	-	1.80
6A	U	6	84	102	-	-	130	80	30	-	-	-	-	-	-	1.30
10A	U	10	102	126	-	-	150	100	41	-	-	-	-	-	-	1.94
15A	F	15	150	-	-	-	200	125	-	115	80	55	18	1	4-19	5.60
20A	F	20	170	-	-	-	220	140	-	120	85	60	18	1	4-19	7.09
25A	F	25	220	-	-	-	250	140	-	130	95	70	20	1	4-19	9.46



MATERIAL

No	Name of part	Material
1	Body	SF440 or S25C
2	Flange	SF440 or S25C
3	Bonnet	SF440 or S25C
4	Disc	C6782 BD or C6782 BE
5	Disc Nut	C6782BD
6	Stem	C6782BD or C6782 BE
7	Handwheel	FC200
8	Packing Bush	C3771BD
9	Gland Nut	C3771BD
10	Packing Gland	C3771BD
11	Hexagon Nut	C3771BD
12	Split Pin	C2600W
13	Set Screw	C2700W
14	Lock Plate	SUS304
15	Disc Lock Washer	C2600 P
16	Union nut	S25C
17	Nipple for Copper Pipe	CAC201 or C1100 BD
18	Nipple for Steel Pipe	S15C
19	Packing	NON-ASBESTOS
20	Gasket	NON-ASBESTOS
21	Name Plate (※)	C2801P

(※) Option

CLASSIFICATION

Type	Type of connection
S	Union nut and thread
F	Flange

HYDRAULIC INSPECTION

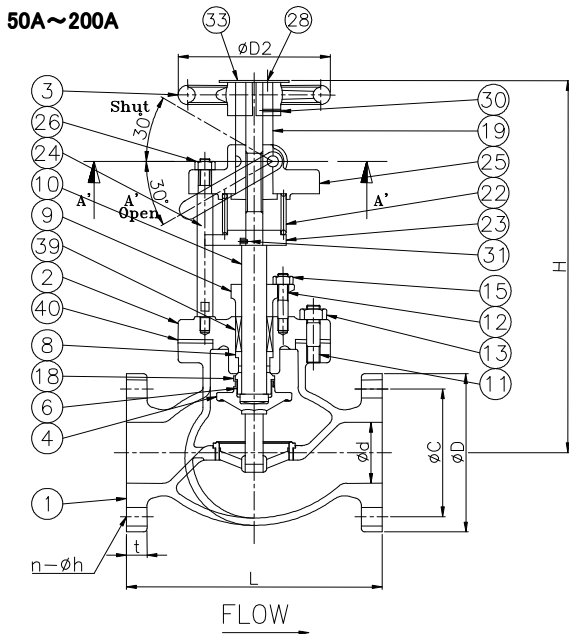
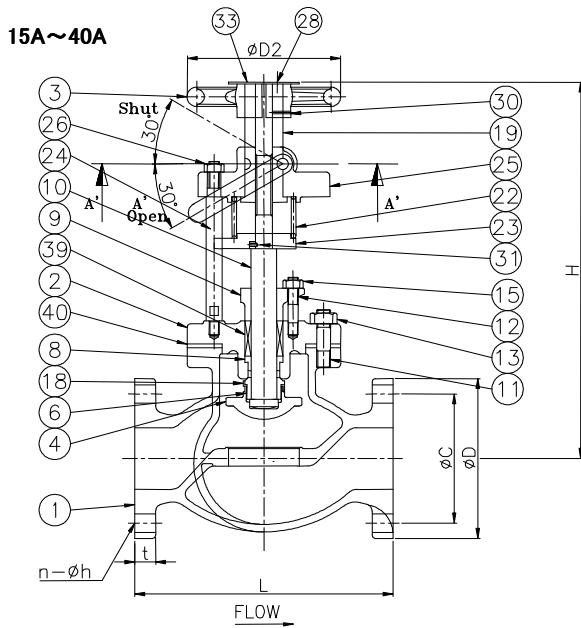
Test pressure Mpa	
Body	Seat
6.76	4.96

PRESSURE RATING

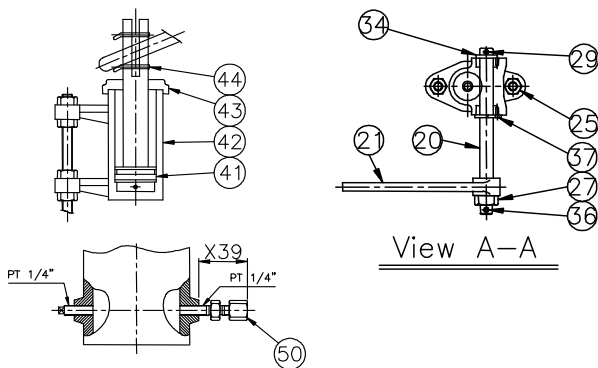
Applicable Standard No.	Refer to JIS F7337
Fluid Condition	Maximum working pressure Mpa
Air	4.51

DIMENTIONAL TABLE

Model No	WVSFLA30																
Standard	Refer to JIS F7337																
Rating	JIS 30K																
Item	AIR ANGLE VALVE																
Size	Type	d	L1	l1	l2	l3	k	H	D2	B2	D	C	g	t	f	n-h	Weight [kg]
6A	S	6	-	42	38	51	12	130	80	30	28	-	-	-	-	-	1.23
10A	S	10	-	46	45	58	16	150	100	41	34	-	-	-	-	-	1.75
15A	F	15	90	-	-	-	-	175	125	-	115	80	55	18	1	4-19	5.59
20A	F	20	95	-	-	-	-	185	140	-	120	85	60	18	1	4-19	7.00
25A	F	25	100	-	-	-	-	210	140	-	130	95	70	20	1	4-19	9.11



DETAIL OF ACTUATOR



MATERIAL

No	Name of part	Material	
		15A ~ 40A	50A ~ 200A
1	Body	CAC406	SC480
2	Bonnet	CAC406	SC480
3	Handwheel	FC200	FC200
4	Disc	CAC406	SCS2
5	Valve Seat	-	SCS2
6	Disc Nut	CAC406 or C3771BD	SUS410
8	Packing Bush	CAC406 or C3771BD	CAC406 or C3771BD
9	Packing Gland	CAC406	CAC406
10	Stem	C3771BD	SUS410
11	Stud Bolt	SS400	SS400
12	Stud Bolt	SS400	SS400
13	Hexagon Nut	SS400	SS400
15	Hexagon Nut	C3771BD	C3771BD
18	Disc Lock Washer	C2600P	SUS304
19	Bush for Stem Lift	C3771BD	C3771BD
20	Operating Spindle	SUS403	SUS403
21	Lever	SS400	SS400
22	Spring	SWP-A	SUP4
23	Spring Support	SS400	SS400
24	Stay	SS400	SS400
25	Support Bush for Stem	CAC406	CAC406 or SC480
26	Hexagon Nut	SS400	SS400
27	Hexagon Nut	SS400	SS400
28	Machine Screw	C2700W	C2700W
29	Split Pin	SWRM10	SWRM10
30	Machine Screw	C2700W	C2700W
31	Lock Pin	SS400	SS400
32	Set Screw	-	SS400
33	Name plate (※)	C2801P	C2801P
34	Washer	SS400	SS400
35	Bush	-	C3771BD
36	Split Pin	SWRM10	SWRM10
37	Set Screw	SS400	SS400
39	Packing	Non-Aabestos	Non-Aabestos
40	Gasket	Non-Aabestos	Non-Aabestos
41	Piston	C3771BD	C3771BD
42	Cylinder	CAC406	CAC406
43	Cap	C3771BD	C3771BD
44	Pin	C3771BD	C3771BD
50	Nipple	C3771BD	C3771BD

(※) Option

HYDRAULIC INSPECTION

Rating	Test pressure Mpa	
	Body	Seat
10K	0.70	0.20

PRESSURE RATING

Applicable Standard No.	Reffer to JIS F7399
Fluid condition	Maximum working pressure Mpa
Oil	0.1

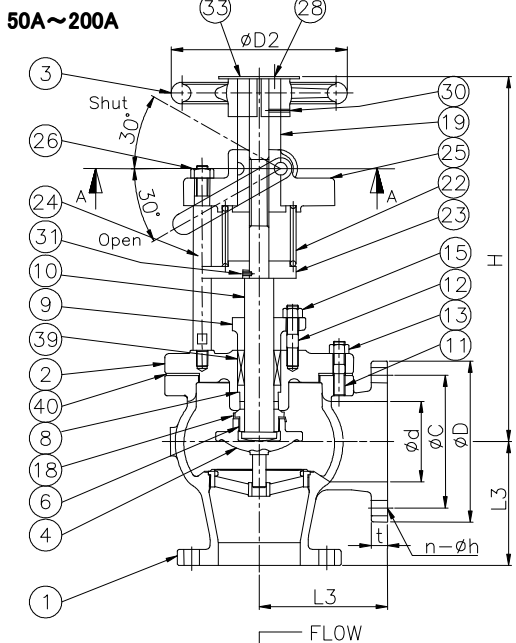
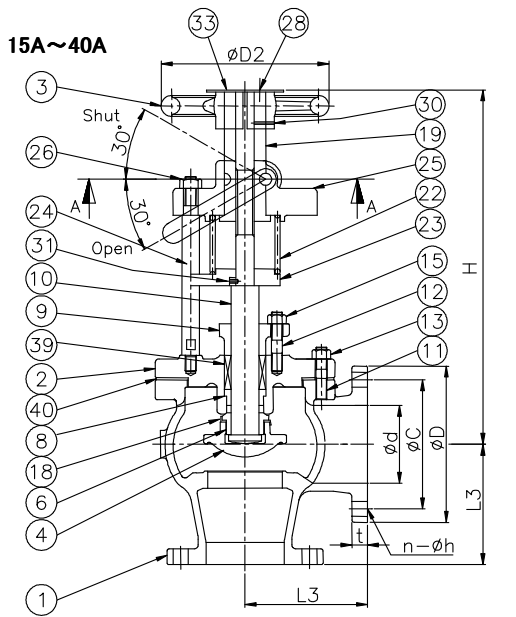
DIMENTIONAL TABLE

Model No	WVBCESOG10 / WVBCESOG16								
Standard	Reffer to JIS F7399								
Flange	JIS 10K FF / 16K FF								
Item	AIR OPERATED EMERGENCY SHUT-OFF GLOBE VALVE								
Size	d	L	D	C	n-h	t	H	D2	Weight [kg]
15A	15	110	95	70	4-15	12	253	120	7.8
20A	20	130	100	75	4-15	14	259	120	8.3
25A	25	130	125	90	4-19	14	265	120	9.8
32A	32	160	135	100	8-19	16	302	140	12.5
40A	40	170	140	105	8-19	16	310	140	14

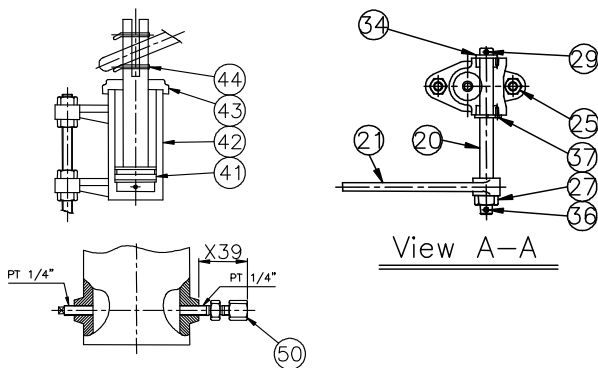
Model No	WVSCESOG10								
Standard	Reffer to JIS F7399								
Flange	JIS 10K FF								
Item	AIR OPERATED EMERGENCY SHUT-OFF GLOBE VALVE								
Size	d	L	D	C	n-h	t	H	D2	Weight [kg]
50A	50	220	155	120	4-19	16	335	160	23.3
65A	65	270	175	140	4-19	18	395	200	33.6
80A	80	300	185	150	8-19	18	420	200	39.0
100A	100	350	210	175	8-19	18	510	250	62.2
125A	125	420	250	210	8-23	20	570	280	91
150A	150	490	280	240	8-23	22	660	315	123
200A	200	570	330	290	12-23	22	780	335	220

OPERATION

Type	Type of operation
A	Air Operated
W	Wire Operated



DETAIL OF ACTUATOR



MATERIAL

No	Name of part	Material	
		15A ~ 40A	50A ~ 200A
1	Body	CAC406	SC480
2	Bonnet	CAC406	SC480
3	Handwheel	FC200	FC200
4	Disc	CAC406	SCS2
5	Valve Seat	-	SCS2
6	Disc Nut	CAC406 or C3771BD	SUS410
8	Packing Bush	CAC406 or C3771BD	CAC406 or C3771BD
9	Packing Gland	CAC406	CAC406
10	Stem	C3771BD	SUS410
11	Stud Bolt	SS400	SS400
12	Stud Bolt	SS400	SS400
13	Hexagon Nut	SS400	SS400
15	Hexagon Nut	C3771BD	C3771BD
18	Disc Lock Washer	C2600P	SUS304
19	Bush for Stem Lift	C3771BD	C3771BD
20	Operating Spindle	SUS403	SUS403
21	Lever	SS400	SS400
22	Spring	SWP-A	SUP4
23	Spring Support	SS400	SS400
24	Stay	SS400	SS400
25	Support Bush for Stem	CAC406	CAC406 or SC480
26	Hexagon Nut	SS400	SS400
27	Hexagon Nut	SS400	SS400
28	Machine Screw	C2700W	C2700W
29	Split Pin	SWRM10	SWRM10
30	Machine Screw	C2700W	C2700W
31	Lock Pin	SS400	SS400
32	Set Screw	-	SS400
33	Name plate (※)	C2801P	C2801P
34	Washer	SS400	SS400
35	Bush	-	C3771BD
36	Split Pin	SWRM10	SWRM10
37	Set Screw	SS400	SS400
39	Packing	Non-Aabestos	Non-Aabestos
40	Gasket	Non-Aabestos	Non-Aabestos
41	Piston	C3771BD	C3771BD
42	Cylinder	CAC406	CAC406
43	Cap	C3771BD	C3771BD
44	Pin	C3771BD	C3771BD
50	Nipple	C3771BD	C3771BD

(※) Option

HYDRAULIC INSPECTION

Rating	Test pressure Mpa	
	Body	Seat
10K	0.70	0.20

PRESSURE RATING

Applicable Standard No.	Refer to JIS F7399
Fluid condition	Maximum working pressure Mpa
Oil	0.1

DIMENTIONAL TABLE

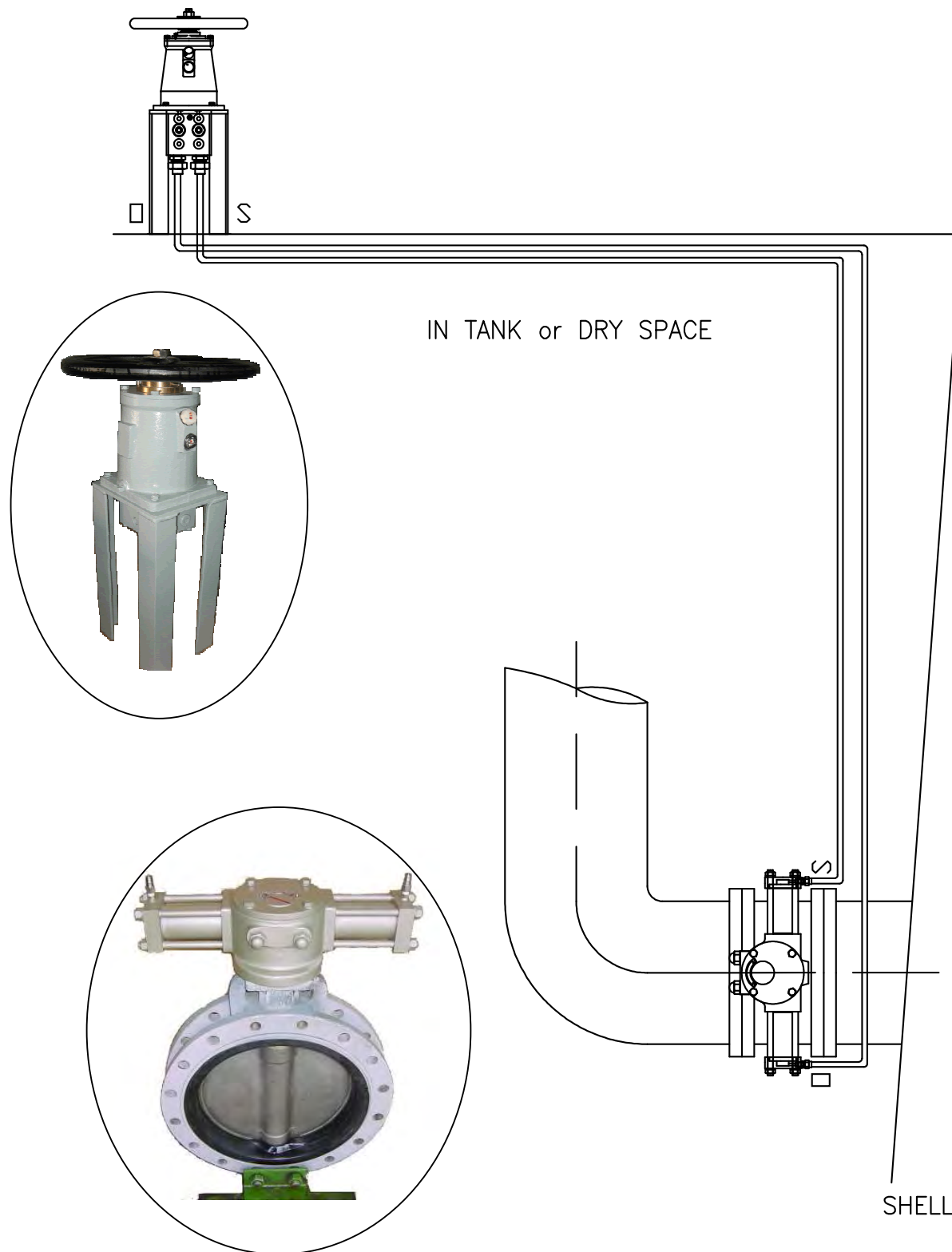
Model No	WVBCESOL10 / WVBCESOL16								
Standard	Reffer to JIS F7399								
Flange	JIS 10K FF / 16K FF								
Item	AIR OPERATED EMERGENCY SHUT-OFF ANGLE VALVE								
Size	d	L3	D	C	n-h	t	H	D2	Weight [kg]
15A	15	70	95	70	4-15	12	243	120	7.8
20A	20	75	100	75	4-15	14	246	120	8.2
25A	25	85	125	90	4-19	14	250	120	9.8
32A	32	95	135	100	8-19	16	282	140	12.3
40A	40	100	140	105	8-19	16	286	140	13.7

Model No	WVSCESOL10								
Standard	Reffer to JIS F7399								
Flange	JIS 10K FF								
Item	AIR OPERATED EMERGENCY SHUT-OFF ANGLE VALVE								
Size	d	L3	D	C	n-h	t	H	D2	Weight [kg]
50A	50	120	155	120	4-19	16	335	160	22
65A	65	130	175	140	4-19	18	395	200	31
80A	80	140	185	150	8-19	18	420	200	26
100A	100	160	210	175	8-19	18	510	250	55
125A	125	180	250	210	8-23	20	570	280	78
150A	150	205	280	240	8-23	22	660	315	104
200A	200	230	330	290	12-23	22	780	335	147

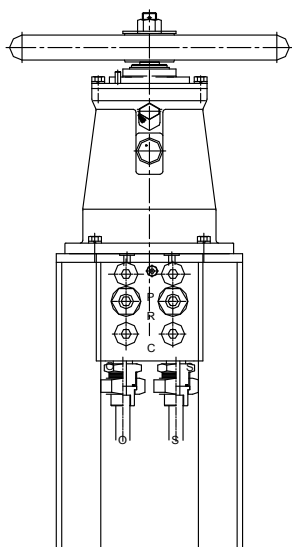
OPERATION

Type	Type of operation
A	Air Operated
W	Wire Operated

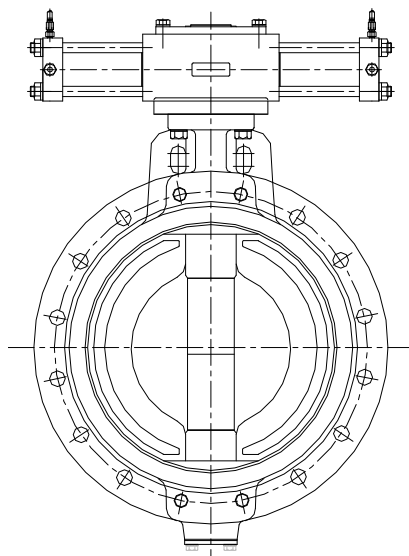
PIPING PLAN



APPEARANCE



Hydraulic transmitter

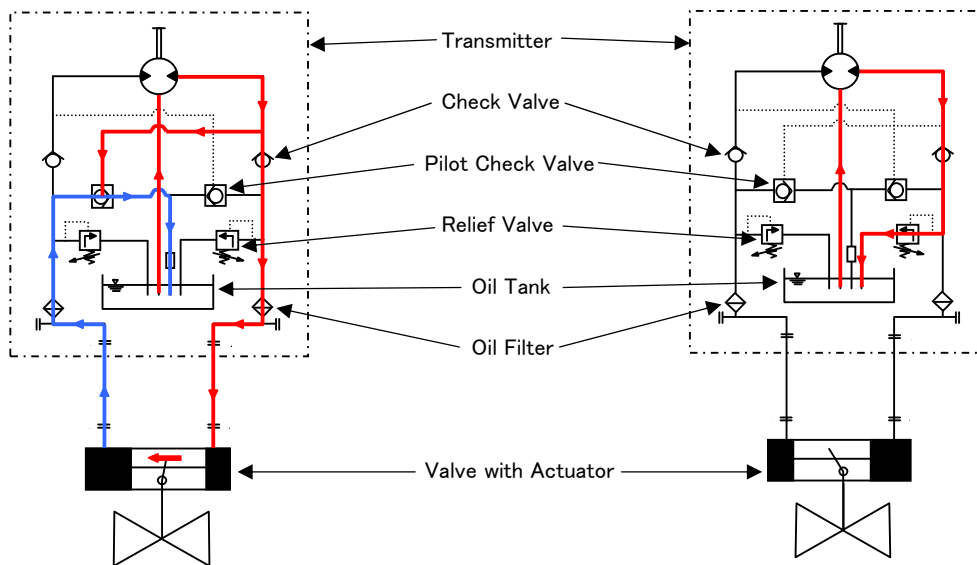


Hydraulic Actuator with Butterfly valve

FLOW CHART

1) Oil flows towards the closed side of the valve.

2) In case a person continues handle operation after closing all the valve.



Following pressure caused by PILOT CHECK VALVE, the valve opens and oil flows to oil tank.

Operating the RELIEF VALVE when a person continues handle operation after closing all the valves, the oil flows to oil tank.

HYDRAULIC INSPECTION

Description	Model No	Test pressure Mpa
Transmitter	WVHTV	13.2
Actuator	WVHAV	13.2

HYDRAULIC PRESSURE RATING

Description	Model No	Setting pressure Mpa
Transmitter	WVHTV	8.8
Actuator	WVHAV	8.8

INDEX

MODEL NUMBER INSTRUCTION

SYMBOL

		Material			Description					Rating		
W	V	○	○	○	F	○	○	○	○	○	○	○

MODEL NUMBER INSTRUCTION

CAST BRONZE VALVES

Model No.	Material	Rating	Description	Reference in JIS F	Page
W V B C F G 0 5	Cast Bronze	5K	Globe Valve	F7427 (F7301)	3
W V B C F G 1 6	Cast Bronze	16K	Globe Valve	F7427 (F7303)	3
W V B C F N G 0 5	Cast Bronze	5K	Screw-down Check Globe Valve	F7427 (F7351)	3
W V B C F N G 1 6	Cast Bronze	16K	Screw-down Check Globe Valve	F7427 (F7409)	3
W V B C F L 0 5	Cast Bronze	5K	Angle Valve	F7427 (F7302)	4
W V B C F L 1 6	Cast Bronze	16K	Angle Valve	F7427 (F7304)	4
W V B C F N L 0 5	Cast Bronze	5K	Screw-down Check Angle Valve	F7427 (F7352)	4
W V B C F N L 1 6	Cast Bronze	16K	Screw-down Check Angle Valve	F7427 (F7410)	4
W V B C F L N 0 5	Cast Bronze	5K	Lift Check Valve	F7427 (F7356)	5
W V B C F S N 0 5	Cast Bronze	5K	Swing Check Valve	F7427 (F7371)	6
W V B C F S J 0 5	Cast Bronze	5K	Rising Stem type Gate Valve	F7427 (F7367)	7
W V B C F S J 1 0	Cast Bronze	10K	Rising Stem type Gate Valve	F7427 (F7368)	7
W V B C F G U 0 5	Cast Bronze	5K	Union Bonnet Type Globe Valve	F7427 (F7346)	8
W V B C F G U 1 6	Cast Bronze	16K	Union Bonnet Type Globe Valve	F7427 (F7348)	8
W V B C F N U G 0 5	Cast Bronze	5K	Union Bonnet Type Screw-down Check Globe Valve	F7427 (F7411)	8
W V B C F N U G 1 6	Cast Bronze	16K	Union Bonnet Type Screw-down Check Globe Valve	F7427 (F7413)	8
W V B C F L U 0 5	Cast Bronze	5K	Union Bonnet Type Angle Valve	F7427 (F7347)	9
W V B C F L U 1 6	Cast Bronze	16K	Union Bonnet Type Angle Valve	F7427 (F7349)	9
W V B C F N U L 0 5	Cast Bronze	5K	Union Bonnet Type Screw-down Check Angle Valve	F7427 (F7412)	9
W V B C F N U L 1 6	Cast Bronze	16K	Union Bonnet Type Screw-down Check Angle Valve	F7427 (F7414)	9
W V B C F L N U G 0 5	Cast Bronze	5K	Union Bonnet Type Lift Check Globe Valve	F7427 (F7415)	10
W V B C F L N U G 1 6	Cast Bronze	16K	Union Bonnet Type Lift Check Globe Valve	F7427 (F7417)	10
W V B C F L N U L 0 5	Cast Bronze	5K	Union Bonnet Type Lift Check Angle Valve	F7427 (F7416)	10
W V B C F L N U L 1 6	Cast Bronze	16K	Union Bonnet Type Lift Check Angle Valve	F7427 (F7418)	10
W V B C F G T 2 0	Cast Bronze	20K	Globe Valve	F7427 (F7388)	11
W V B C F L T 2 0	Cast Bronze	20K	Angle Valve	F7427 (F7389)	11
W V B C F S D 0 5	Cast Bronze	5K	Fuel Oil Tank Self-Closing Drain Valve	F7389	12
W V B C F S D 1 0	Cast Bronze	10K	Fuel Oil Tank Self-Closing Drain Valve	F7389	12
W V B C F H G 0 5	Cast Bronze	5K	Hose Globe Valve	F7427 (F7334)	13,14
W V B C F H G 1 0	Cast Bronze	10K	Hose Globe Valve	F7427 (F7334)	13,14
W V B C F H L 0 5	Cast Bronze	5K	Hose Angle Valve	F7427 (F7334)	13,14
W V B C F H L 1 0	Cast Bronze	10K	Hose Angle Valve	F7427 (F7334)	13,14
W V B C F C 0 5	Cast Bronze	5K	Flanged Cock	F7381	15
W V B C F C S 1 6	Cast Bronze	16K	Cocks	F7387	16
W V B C E S O G 1 0	Cast Bronze	10K	Emergency Shut-off Globe Valve	F7399	43,44
W V B C E S O G 1 6	Cast Bronze	16K	Emergency Shut-off Globe Valve	F7399	43,44
W V B C E S O L 1 0	Cast Bronze	10K	Emergency Shut-off Angle Valve	F7399	45,46
W V B C E S O L 1 6	Cast Bronze	16K	Emergency Shut-off Angle Valve	F7399	45,46

DUCTILE IRON VALVES VALVES

Model No.	Material	Rating	Description	Reference in JIS F	Page
W V F C D F G 0 5	Ductile Iron	5K	Globe Valve	F7505 (F7305)	17,18
W V F C D F G 1 0	Ductile Iron	10K	Globe Valve	F7505 (F7307)	17,18
W V F C D F G 1 6	Ductile Iron	16K	Globe Valve	F7505 (F7309)	17,18
W V F C D F N G 0 5	Ductile Iron	5K	Screw-down Check Globe Valve	F7505 (F7353)	17,18
W V F C D F N G 1 0	Ductile Iron	10K	Screw-down Check Globe Valve	F7505 (F7375)	17,18
W V F C D F N G 1 6	Ductile Iron	16K	Screw-down Check Globe Valve	F7505 (F7377)	17,18
W V F C D F L 0 5	Ductile Iron	5K	Angle Valve	F7505 (F7306)	19,20
W V F C D F L 1 0	Ductile Iron	10K	Angle Valve	F7505 (F7308)	19,20
W V F C D F L 1 6	Ductile Iron	16K	Angle Valve	F7505 (F7310)	19,20
W V F C D F N L 0 5	Ductile Iron	5K	Screw-down Check Angle Valve	F7505 (F7354)	19,20
W V F C D F N L 1 0	Ductile Iron	10K	Screw-down Check Angle Valve	F7505 (F7376)	19,20
W V F C D F N L 1 6	Ductile Iron	16K	Screw-down Check Angle Valve	F7505 (F7378)	19,20

INDEX

MODEL NUMBER INSTRUCTION

SYMBOL

		Material			Description					Rating		
W	V	○	○	○	F	○	○	○	○	○	○	○

MODEL NUMBER INSTRUCTION

CAST IRON VALVES

Model No.	Material	Rating	Description	Reference in JIS F	Page
W V F C F G 0 5	Cast Iron	5K	Globe Valve	F7425 (F7305)	21,22
W V F C F G 1 0	Cast Iron	10K	Globe Valve	F7425 (F7307)	21,22
W V F C F G 1 6	Cast Iron	16K	Globe Valve	F7425 (F7309)	21,22
W V F C F N G 0 5	Cast Iron	5K	Screw-down Check Globe Valve	F7425 (F7353)	21,22
W V F C F N G 1 0	Cast Iron	10K	Screw-down Check Globe Valve	F7425 (F7375)	21,22
W V F C F N G 1 6	Cast Iron	16K	Screw-down Check Globe Valve	F7425 (F7377)	21,22
W V F C F L 0 5	Cast Iron	5K	Angle Valve	F7425 (F7306)	23,24
W V F C F L 1 0	Cast Iron	10K	Angle Valve	F7425 (F7308)	23,24
W V F C F L 1 6	Cast Iron	16K	Angle Valve	F7425 (F7310)	23,24
W V F C F N L 0 5	Cast Iron	5K	Screw-down Check Angle Valve	F7425 (F7354)	23,24
W V F C F N L 1 0	Cast Iron	10K	Screw-down Check Angle Valve	F7425 (F7376)	23,24
W V F C F N L 1 6	Cast Iron	16K	Screw-down Check Angle Valve	F7425 (F7378)	23,24
W V F C F L N G 0 5	Cast Iron	5K	Lift Check Globe Valve	F7425 (F7358)	25
W V F C F L N L 0 5	Cast Iron	5K	Lift Check Angle Valve	F7425 (F7359)	25
W V F C F S N 0 5	Cast Iron	5K	Swing Check Valve	F7425 (F7372)	26
W V F C F S N 1 0	Cast Iron	10K	Swing Check Valve	F7425 (F7373)	26
W V F C F S 0 5	Cast Iron	5K	Gate Valve	F7425 (F7363)	27,28
W V F C F S 1 0	Cast Iron	10K	Gate Valve	F7425 (F7364)	27,28
W V F C F S 1 6	Cast Iron	16K	Gate Valve	F7425 (F7369)	27,28
W V F C F H G 0 5	Cast Iron	5K	Hose Globe Valve	F7425 (F7333)	29
W V F C F H G 1 0	Cast Iron	10K	Hose Globe Valve	F7425 (F7333)	29
W V F C F H L 0 5	Cast Iron	5K	Hose Angle Valve	F7425 (F7333)	30
W V F C F H L 1 0	Cast Iron	10K	Hose Angle Valve	F7425 (F7333)	30

CAST STEEL VALVES

Model No.	Material	Rating	Description	Reference in JIS F	Page
W V S C F G 0 5	Cast Steel	5K	Globe Valve	F7426 (F7311)	31,32
W V S C F G 1 0	Cast Steel	10K	Globe Valve	F7426 (F7319)	31,32
W V S C F G 2 0	Cast Steel	20K	Globe Valve	F7426 (F7313)	31,32
W V S C F N G 0 5	Cast Steel	5K	Screw-down Check Globe Valve	F7426 (F7353)	31,32
W V S C F N G 1 0	Cast Steel	10K	Screw-down Check Globe Valve	F7426 (F7371)	31,32
W V S C F N G 2 0	Cast Steel	20K	Screw-down Check Globe Valve	F7426 (F73731)	31,32
W V S C F L 0 5	Cast Steel	5K	Angle Valve	F7426 (F7312)	33,34
W V S C F L 1 0	Cast Steel	10K	Angle Valve	F7426 (F7320)	33,34
W V S C F L 2 0	Cast Steel	20K	Angle Valve	F7426 (F7314)	33,34
W V S C F N L 0 5	Cast Steel	5K	Screw-down Check Angle Valve	F7426 (F7354)	33,34
W V S C F N L 1 0	Cast Steel	10K	Screw-down Check Angle Valve	F7426 (F7472)	33,34
W V S C F N L 2 0	Cast Steel	20K	Screw-down Check Angle Valve	F7426 (F7474)	33,34
W V S C F S 1 0	Cast Steel	10K	Gate Valve	F7426 (F7366)	35
W V S C F G A 3 0	Cast Steel	30K	Globe Air Valve	F7426 (F7340)	36
W V S C F L A 3 0	Cast Steel	30K	Angle Air Valve	F7426 (F7375)	36
W V S C E S O G 1 0	Cast Steel	10K	Emergency Shut-off Globe Valve	F7399	43,44
W V S C E S O L 1 0	Cast Steel	10K	Emergency Shut-off Angle Valve	F7399	45,46

FORGED STEEL VALVES

Model No.	Material	Rating	Description	Reference in JIS F	Page
W V S F F G U 2 0	Forged Steel	20K	Globe Valve	F7421	37
W V S F F L U 2 0	Forged Steel	20K	Angle Valve	F7422	38
W V S F F G U 4 0	Forged Steel	40K	Globe Valve	F7329	39
W V S F F L U 4 0	Forged Steel	40K	Angle Valve	F7330	40
W V S F F G A 3 0	Forged Steel	30K	Globe Air Valve	F7336	41
W V S F F L A 3 0	Forged Steel	30K	Angle Air Valve	F7337	42

PRODUCTS LINE UP



 **WORLD VALVE CO., LTD.**

**Head office : 5-chome, 27-7, Yokohama-shi, Kanagawa-ken,
Minami-ku, Yoshino-cho, 232-0014, Japan**

TEL : +81-45-250-0659

FAX : +81-45-251-2682

URL : www.worldvalve.co.jp

INQ : info@worldvalve.co.jp

**Pusan office : 1-308 Kamjon-dong, 152-2 Yutong-sangka,
Ssang-ku, Pusan, Korea**

TEL : +82-51-313-0335

FAX : +82-51-325-0336